



Ashworth Mansions | Maida Vale | London | W9

Asking Price - £1,200,000



- Four bedrooms
- Private entrance
- Period mansion block
- Four bathrooms
- Bright living room with bay window
- Communal garden

Nestled in the heart of Maida Vale, this splendid four bedroom apartment on Elgin Avenue offers a unique blend of classic charm and modern convenience. Set within a distinguished red brick mansion block, this property, built in 1905, spans an impressive 1,472 square feet, providing ample space for comfortable living.

Before entering through a private entrance, you are greeted by a small patio area that enhances the sense of privacy. The apartment boasts a bright living room, adorned with a delightful bay window, which floods the space with natural light, creating a warm and inviting atmosphere.





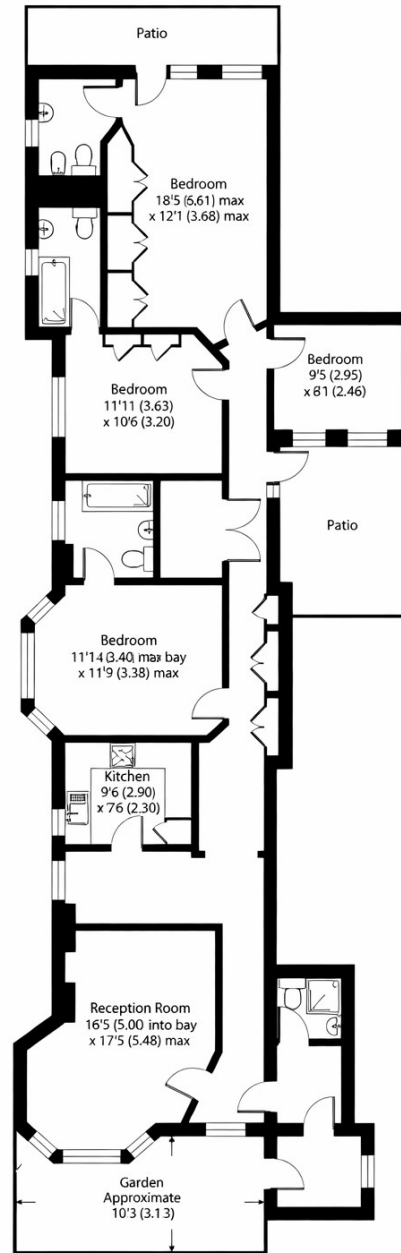
The property features four well appointed bedrooms, three of which come with en-suite bathrooms, ensuring convenience and comfort for all residents. Generous built in storage throughout the apartment adds to its practicality. The separate kitchen is spacious and provides an excellent extension of the living space

Ashworth Mansions is ideally located, with the lush Paddington Recreation Ground just behind the building, offering a perfect escape for outdoor activities. The vibrant shopping and transport facilities of Maida Vale are within easy reach, with Lauderdale Parade just moments away. For those commuting, Maida Vale (Bakerloo line) is conveniently close, providing excellent transport links to the rest of London.

This apartment presents a fantastic opportunity for those seeking a spacious and well located home in one of London's most desirable areas. With its blend of period features and modern amenities, it is a property that truly deserves a viewing.

*some furniture has been digitally added





Elgin Avenue, W9
 Approximate Area = 1472 sq ft / 136.7 sq m
 For identification ailly - Not to scale

Energy Efficiency Rating		
	Current	Potential
Very energy efficient - lower running costs		
(92 plus) A		
(81-91) B		
(69-80) C		
(55-68) D		
(39-54) E		
(21-38) F		
(1-20) G		
Not energy efficient - higher running costs		
England & Wales	69	
EU Directive 2002/91/EC		

24 Bristol Gardens
 London
 W9 2JQ
 hello@draperlondon.com
 0203 143 1900