



Your Logo

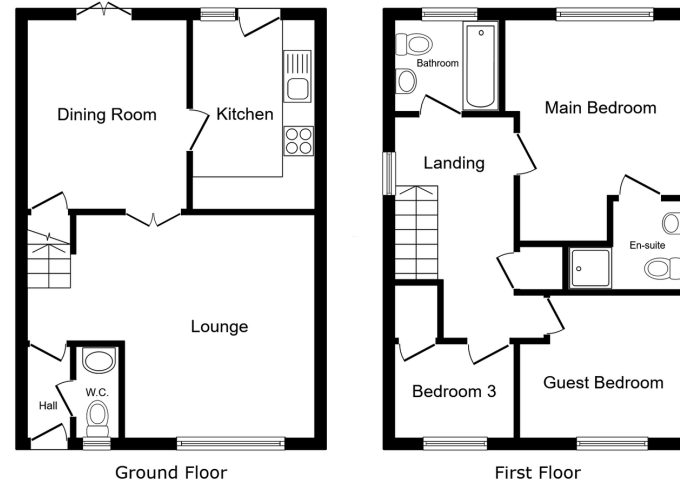
68 Malthouse Road,
£240,000

🛏 3 🚿 2 🚗 2



- Popular Residential Location
- Very well Presented
- Recent Kitchen and Bathrooms
- Deceptively Spacious
- Three Bedrooms
- Private and Enclosed Rear Garden
- Close to Popular Schools
- Bathroom, Ensuite and Downstairs WC
- Off Road Parking
- Must Be Viewed





This floor plan is for illustrative purposes only. It is not drawn to scale. Any measurements, floor areas (including any total floor area), openings and orientations are approximate. No details are guaranteed, they cannot be relied upon for any purpose and do not form any part of any agreement. No liability is taken for any error, omission or misstatement. A party must rely upon its own inspection(s). Powered by www.propertybox.co

REF: NH1497

SIMPLY STUNNING! A truly delightful and well presented, three bedroomed family home in an extremely popular residential location within easy reach of the town centre but far enough away for a more peaceful life This spacious and updated property offers great space for a growing family and is within walking distance of popular schools and the ever popular Nutbrook Trail. Book your viewing today by calling Nicola on 07496 276 270.

