



CLIVEPEARCE
Now you're moving

2 Bedrooms

Bungalow - Detached

Asking Price

£345,000

Located in

Truro



www.clivepearceproperty.com



Forth Noweth

Truro | | TR3 6LU



NO ONWARD CHAIN - a spacious two double bedroom detached bungalow with established corner plot gardens, driveway parking and a detached garage. Gas central heating is installed.

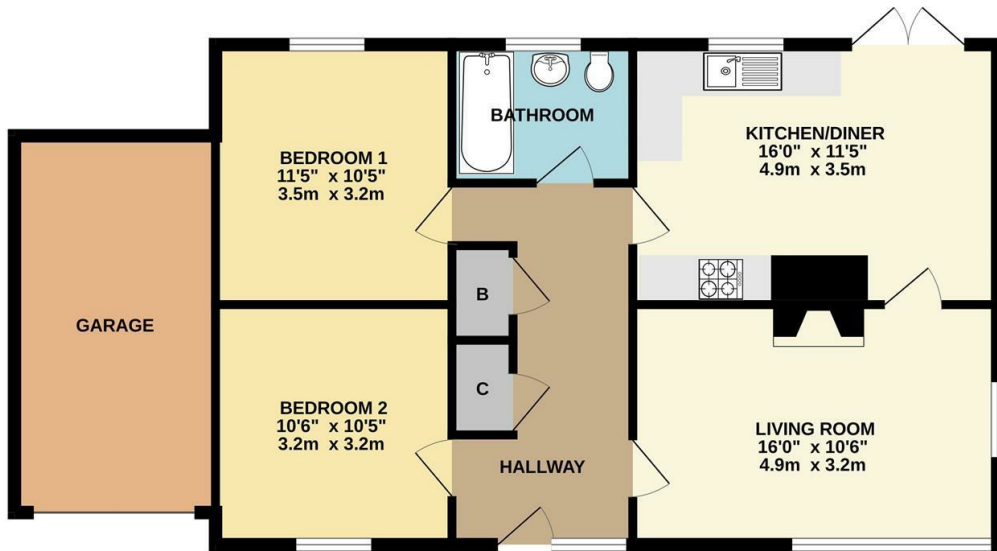
Forth Noweth

£345,000 Freehold



- Offered with no chain!
- Two double bedrooms
- Entrance hallway, cloaks and boiler cupboards
- Gas central heating and double glazing
- Detached garage and impressive corner plot gardens
- Detached bungalow in very popular village
- Great feeling of living space
- Dual aspect living room and fitted kitchen with integrated appliances
- Bathroom with shower over bath

GROUND FLOOR
885 sq.ft. (82.3 sq.m.) approx.



TOTAL FLOOR AREA : 885 sq.ft. (82.3 sq.m.) approx.
 Whilst every attempt has been made to ensure the accuracy of the floorplan contained here, measurements of doors, windows, rooms and any other items are approximate and no responsibility is taken for any error, omission or mis-statement. This plan is for illustrative purposes only and should be used as such by any prospective purchaser. The services, systems and appliances shown have not been tested and no guarantee as to their operability or efficiency can be given.
 Made with Metropix ©2026

Council Tax Band D

Local Authority

Agents Note: Whilst every care has been taken to prepare these particulars, they are for guidance purposes only. All measurements are approximate and are for general guidance purposes only and whilst every care has been taken to ensure their accuracy, they should not be relied upon and potential buyers/tenants are advised to recheck the measurements.

Energy Efficiency Rating		Current	Potential
Very energy efficient - lower running costs			
(92 plus) A			
(81-91) B			
(69-80) C			79
(55-68) D		60	
(39-54) E			
(21-38) F			
(1-20) G			
Not energy efficient - higher running costs			
England & Wales		EU Directive 2002/91/EC	

31 Lemon Street
 Truro
 Cornwall
 TR1 2LS



CLIVEPEARCE
 Now you're moving

hello@clivepearceproperty.com

01872 272622

www.clivepearceproperty.com