

Francemary Road, SE4

£1,800 Per calendar month

A two double bedroom first floor Victorian Conversion flat including modern features throughout, a large living space and ample storage.

Located on Francemary Road, the property is within walking distance to Ladywell train station as well as all amenities that Ladywell Road has to offer.

Features

Victorian Conversion
Unfurnished
Two Double Bedrooms
Modern Throughout
Ample Storage
Close To Station

Francemary Road, London, SE4

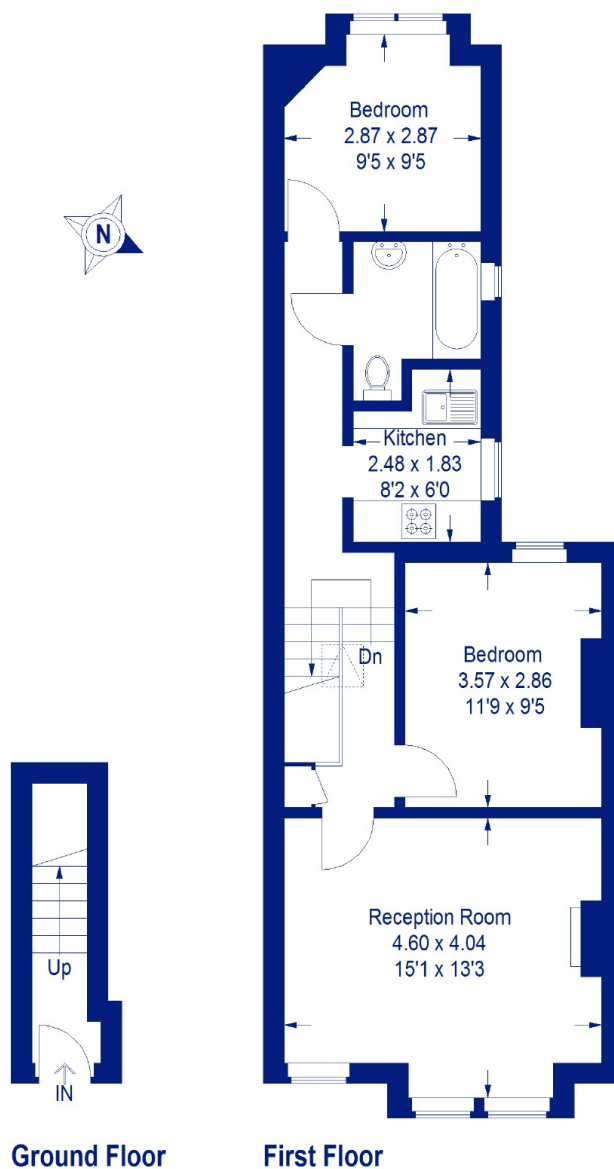
Francemary Road, SE4

Approximate Gross Internal Area

Ground Floor = 3.5 sq m / 38 sq ft

First Floor = 55.6 sq m / 598 sq ft

Total = 59.1 sq m / 636 sq ft



This plan is for layout guidance only. Not drawn to scale unless stated. Windows and door openings are approximate. Whilst every care is taken in the preparation of this plan, please check all dimensions, shapes and compass bearings before making any decisions reliant upon them. (ID:683664)