



MONTGOMERY ROAD, W4

£475,000

One bedroom
Period conversion
First floor
No chain
Close to transport
Energy rating: d

@marshandparsons
marshandparsons.co.uk

MARSH &
PARSONS



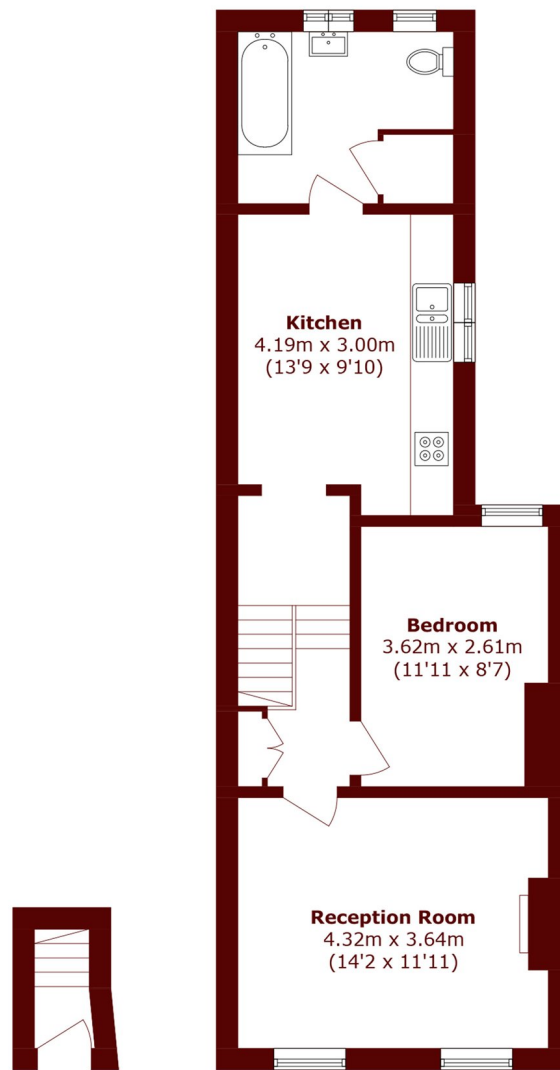
ABOUT THE PROPERTY

This one-bedroom apartment is located on the first floor of this striking period conversion. The property spans over 570 sq ft and offers a large reception room, eat-in kitchen, spacious bedroom and a bathroom. It also comes with a Share of Freehold.

Montgomery Road is under half a mile from Chiswick High Road where there are many boutique shops, restaurants, cafes, bars and superstores. There is excellent transport links close by with Chiswick Park and Turnham Green train stations (District Line). Chiswick is also ideally placed for easy access in and out London and Heathrow.



STEP INSIDE MONTGOMERY ROAD



Ground Floor

First Floor

Total Area (approx.): 53.2 sq. m (572.6 sq. ft)

Chiswick
020 8563 8333

Energy Rating: D We aim to make our particulars both accurate and reliable. However, they are not guaranteed; nor do they form part of an offer or contract. If you require clarification on any points then please contact us, especially if you're traveling some distance to view. Please note that appliances and heating systems have not been tested and therefore no warranties can be given as to their good working order

**MARSH &
PARSONS**