



RESIDENCE

21 Hume Drive, Uddingston, G71 7DN

[www.residencestateagents.co.uk](http://www.residencestateagents.co.uk)



Viewing by appointment with Residence Hamilton

T: 01698 444333 | E: [hamilton@residenceestateagents.co.uk](mailto:hamilton@residenceestateagents.co.uk) | A: 34 Cadzow Street, Hamilton, ML3 6DG





## 2 Bedroom | 1 Public Room | 1 Bathroom

Set within the highly sought-after Kylepark district of Uddingston, this well presented 2 bedroomed mid terrace villa is an ideal first time buy or may appeal to someone looking to downsize.

The accommodation comprises of an entrance hall with staircase to the upper floor level, formal lounge with double glazed aspects to front and access to fitted kitchen that has a range of base and wall mounted storage units with worktop surfaces. An outer door from the kitchen leads to the rear gardens.

On the upper floor there are 2 bedrooms and a modern fitted family bathroom with 3-piece suite.

Features of the property include gas central heating, double glazing, and low-maintenance gardens, with a monobloc driveway to the front and a decked patio to the rear.

Early viewing is advised.

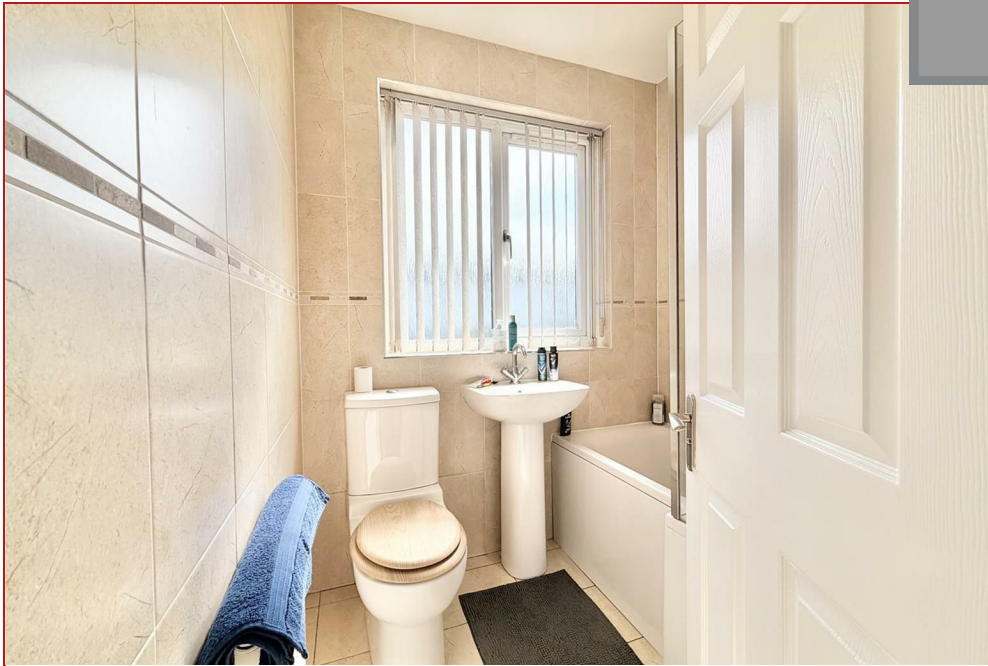
Hume Drive is located within the popular Kylepark area of Uddingston, close to the train station, Main Street and local schools. Uddingston offers a great selection of shops, restaurants, bistros and pubs, along with regular bus and rail links to Glasgow, Edinburgh and surrounding areas. The nearby M74 provides excellent road access, while a range of leisure facilities, including golf courses, gyms and country parks, are also within easy reach.



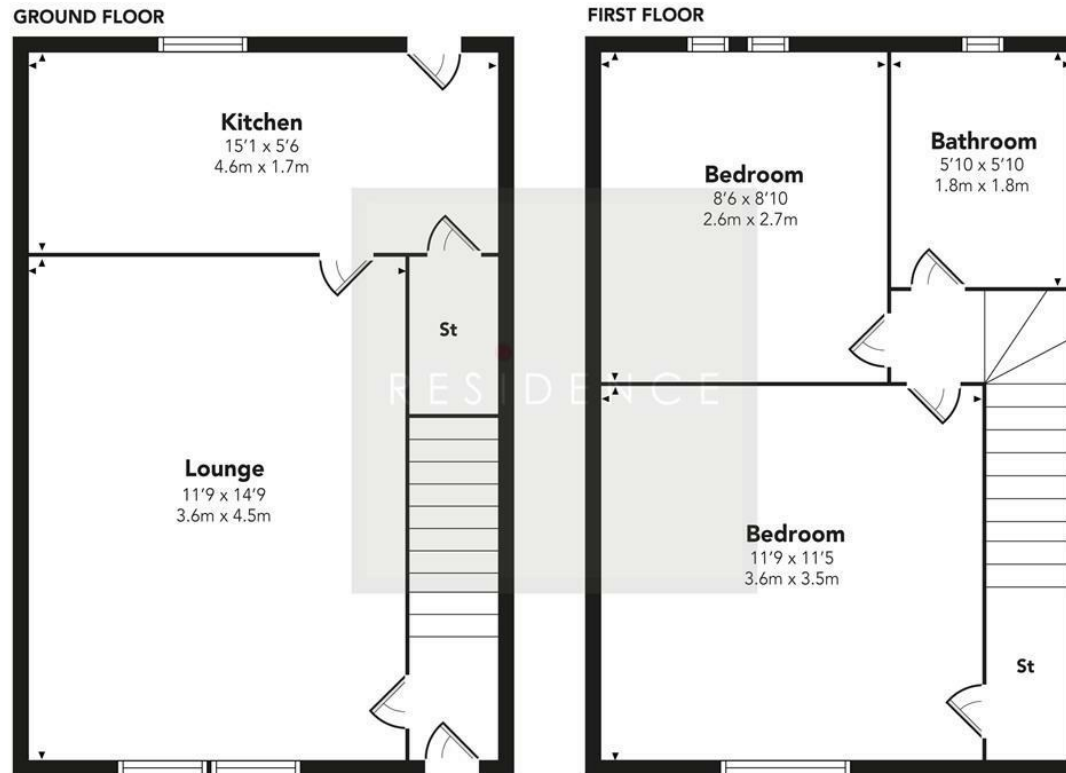
645.83 sq ft | EER = C



RESIDENCE



# Hume Drive



Floor Plan measurements are approximate and are for illustrative purposes only. While we do not doubt the floor plans accuracy, we make no guarantee, warranty or representation as to the accuracy and completeness of the floor plan. You or your advisors should conduct a careful, independent investigation of the property to determine to your satisfaction as to the suitability of the property for your space requirements.

Produced by Plush Plans Ltd

We believe these details to be accurate; however, they do not form any part of a contract. Fixtures and fittings are not included unless specified in the enclosed. Photographs are for general information and it must not be inferred that any item is included for sale with the property. All distances and measurements are approximate. Floorplans may not be to scale and are for illustration purposes only.