



## OVERHILL ROAD, SE22

£425,000

One bedroom  
Stylish home  
22' Lounge  
Solid flooring  
Communal garden  
EPC rating: C

@marshandparsons  
marshandparsons.co.uk

MARSH &  
PARSONS



# ABOUT THE PROPERTY

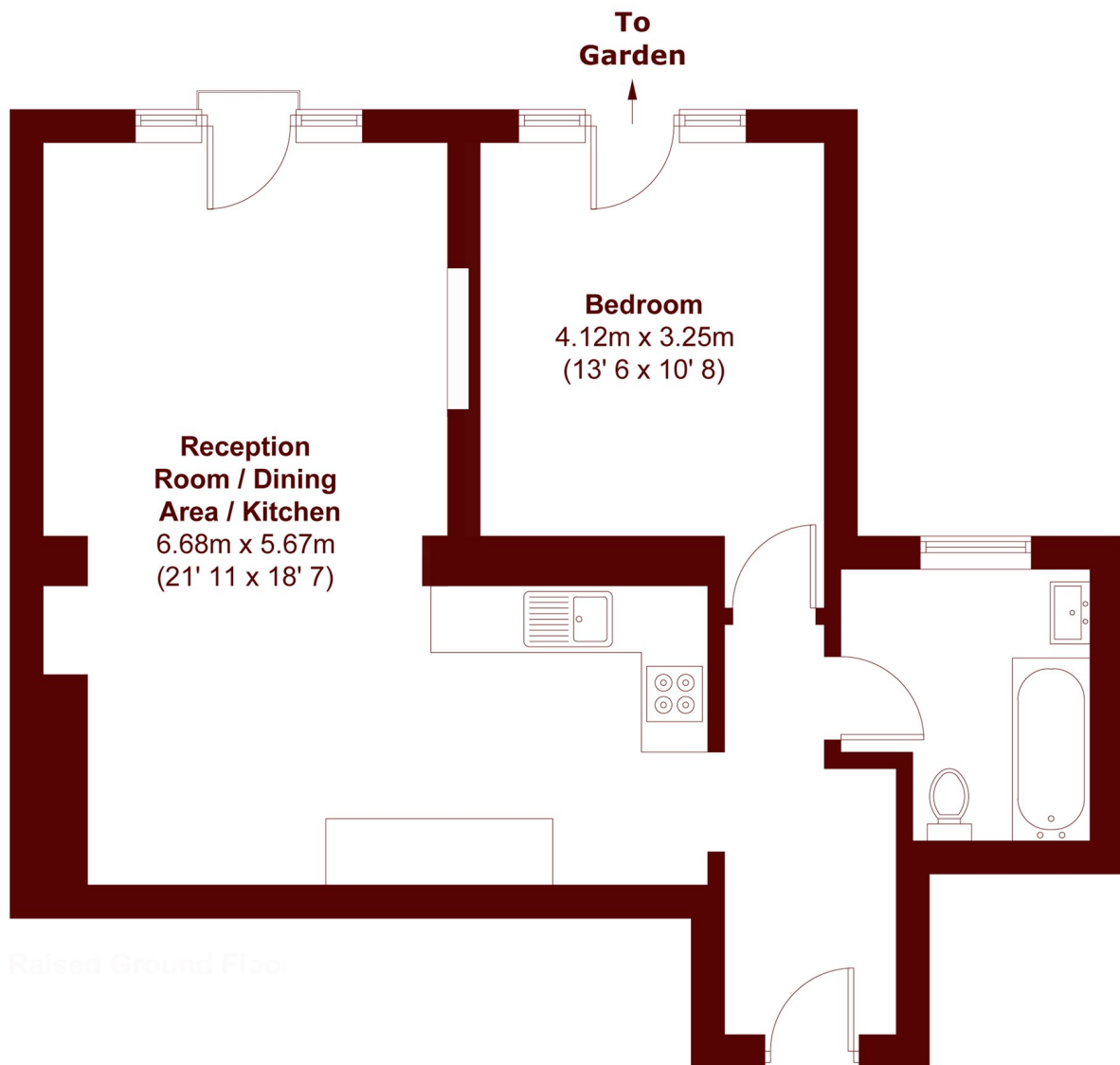
A gorgeous one bedroom apartment set to the hall floor of this attractive semi detached period property, set behind secure electronic gates with allocated parking.

This stylish home features solid flooring throughout, along with lovely high ceilings, has a super calm feeling and offers direct access onto a patio area and then onto the larger communal garden. At 600 Sq Ft, the sizes here are sure to please.

Overhill Road is well located, running just off Lordship Lane, close to ample local amenities as well as the popular wide open green spaces of Dulwich Park along with the shops, bars and restaurants in Dulwich Village.



# STEP INSIDE OVERHILL ROAD



APPROX. GROSS INTERNAL FLOOR AREA  
601 SQFT / 55.8 SQM

**Brockley**  
020 8629 8164

Energy Rating: We aim to make our particulars both accurate and reliable. However, they are not guaranteed; nor do they form part of an offer or contract. If you require clarification on any points then please contact us, especially if you're traveling some distance to view. Please note that appliances and heating systems have not been tested and therefore no warranties can be given as to their good working order

**MARSH &  
PARSONS**