



Edmund Road, £240,000

- 3 BEDROOMS
- MID-TERRACED BUNGALOW
- OPEN PLAN LIVING AREA
- WELL MAINTAINED GARDENS
- SOLAR PANELS
- BEAUTIFULLY RENOVATED
- EPC Rating: C
- Council Tax: A



 3  1  1



About the property

This beautifully renovated 3 bedroom, semi-detached bungalow is perfectly nestled away in the popular village of Sedbury and offers spacious accommodation across one floor. Edmund Road, although of non-standard construction, has been insulated throughout by the current owners and sympathetically restored to a high standard. The property was originally built in the 1900's as Army Officer Quarters!

The property boasts a spacious open plan living area with multi fuel burner and French doors leading to the rear garden, seamlessly blending the outdoors for all year round living, creating a light and inviting space.

With three good size bedrooms and separate family bathroom, this property must be seen to fully appreciate all it has to offer. The rear garden is beautifully maintained, thoughtfully designed and backs onto open recreation grounds. To the front of the property is approached via pedestrian footpath to the front gated courtyard.

Situated a short distance from the local amenities to be found at Sedbury, Chepstow is also close at hand with its attendant range of facilities. There are good junior and comprehensive schools in the area. There are also bus and rail links to be found at Chepstow along with the A48/M48/M4 and M5 motorway network bring Newport, Cardiff, Bristol, Gloucester and Cheltenham within commuting distance.





Accommodation

Kitchen/Living Room

18' 8" x 16' 5" (5.69m x 5.00m)

Bedroom 1

14' 1" x 9' 2" (4.29m x 2.79m)

Bedroom 2

9' 2" x 8' 2" (2.79m x 2.49m)

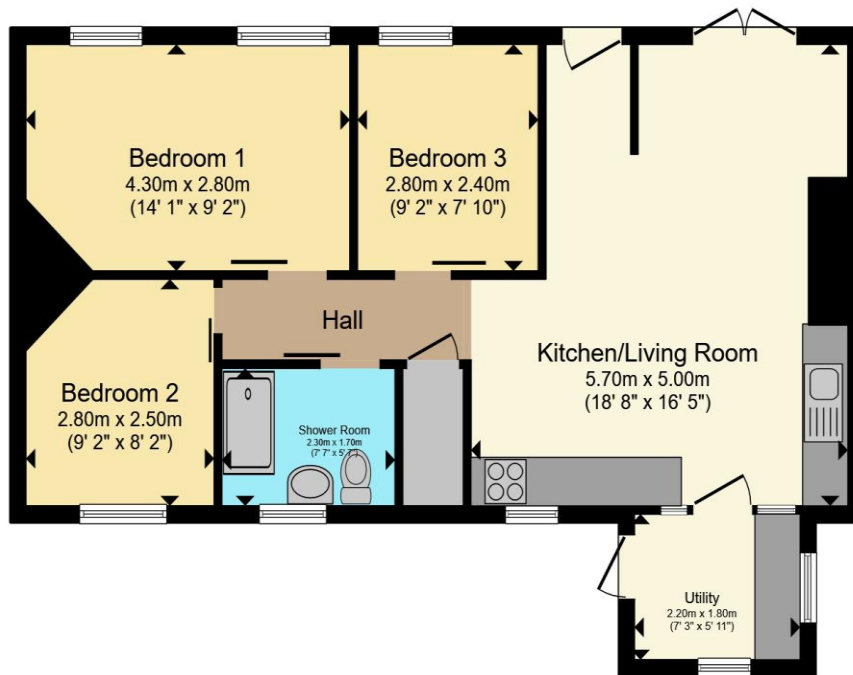
Bedroom 3

9' 2" x 7' 10" (2.79m x 2.39m)

Bathroom

7' 7" x 5' 7" (2.31m x 1.70m)

Floorplan



Total floor area 66.3 m² (714 sq.ft.) approx

This floor plan is for illustrative purposes only. It is not drawn to scale. Any measurements, floor areas (including any total floor area), openings and orientation are approximate. No details are guaranteed, they cannot be relied upon for any purpose and they do not form part of any agreement. No liability is taken for any error, omission or misstatement. A party must rely upon its own inspection(s). Powered by www.propertybox.io



Important Information

Note while we endeavour to make our sales details accurate and reliable, if there is any point which is of particular interest to you, please contact the office and we will be pleased to confirm the position for you. We have not personally tested any apparatus, equipment, fixtures, fittings or services and cannot verify they are in working order or fit for their purposes. Nothing in these particulars is intended to indicate that carpets or curtains, furnishings or fittings, electrical goods (whether wired or not). Gas fires or light fittings or any other fixtures not expressly included form part of the property offered for sale. This computer generated Floorplan, if applicable, is intended as a general guide to the layout and design of the property. It is not to scale and should not be relied upon for dimensions. Tenure: We cannot confirm the tenure of the property as we have not had access to the legal documents. The buyer is advised to obtain verification from their solicitor or surveyor.

Peter Alan Limited is registered in England and Wales under company number 2073153, Registered Office is Cumbria House, 16-20 Hockliffe Street, Leighton Buzzard, Bedfordshire, LU7 1GN. VAT Registration Number is 500 2481 05. For activities relating to regulated mortgages and non-investment insurance contracts, Peter Alan Limited is an appointed representative of Connells Limited which is authorised and regulated by the Financial Conduct Authority. Connells Limited's Financial Services Register number is 302221. Most buy-to-let

