




36 Grange Drive, Stotfold

Guide Price £375,000

 3  1  2

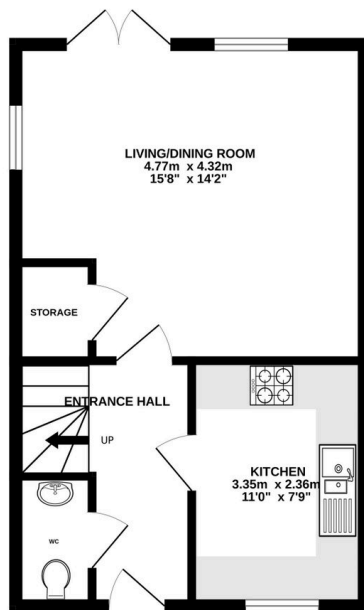


Beautiful Three-Bedroom Semi-Detached Family Home in a Sought-After Stotfold Location

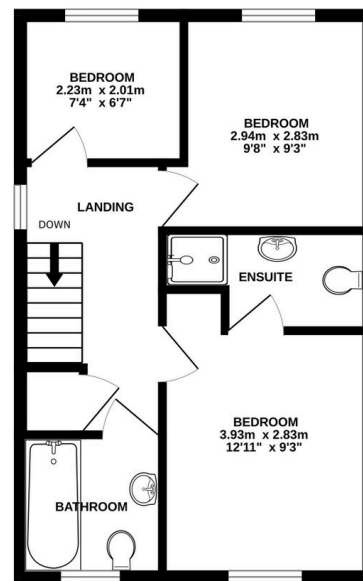
Key Features

- Three-bedroom semi-detached family home
- Modern fitted kitchen
- Principal bedroom with en-suite
- Private rear garden
- Popular residential location
- Spacious living/dining room
- Ground floor cloakroom/WC
- Family bathroom
- Well-presented throughout
- Ideal for families, first-time buyers and commuters

GROUND FLOOR
36.5 sq.m. (393 sq.ft.) approx.



1ST FLOOR
36.5 sq.m. (393 sq.ft.) approx.



TOTAL FLOOR AREA : 73.9 sq.m. (796 sq.ft.) approx.

Whilst every attempt has been made to ensure the accuracy of the floorplan contained here, measurements of doors, windows, rooms and any other items are approximate and no responsibility is taken for any error, omission or mis-statement. This plan is for illustrative purposes only and should be used as such by any prospective purchaser. The services, systems and appliances shown have not been tested and no guarantee as to their operability or efficiency can be given.
Made with Metropix ©2025