

Kingsley Drive, Appleton, Warrington, WA4 5AF

Offers In Region Of £545,000

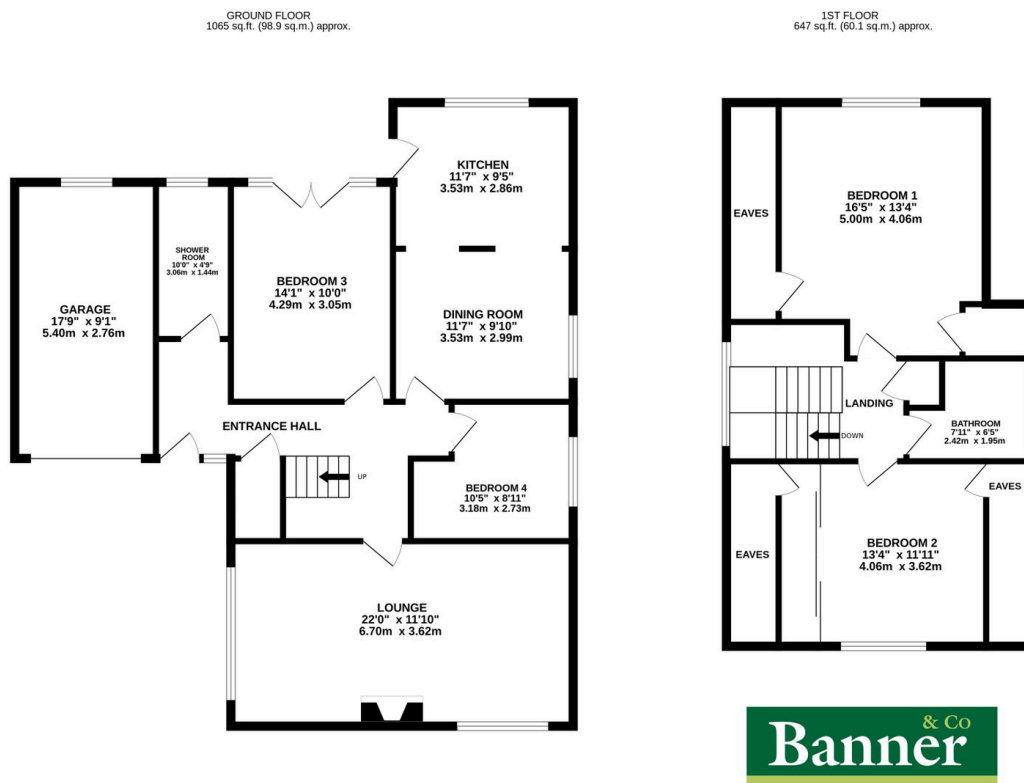


Deceptively spacious detached home, immaculately presented and sitting on a generous corn plot just a short walk from Stockton Heath village centre and its excellent amenities and schools. The versatile layout includes a spacious dual-aspect lounge, well appointed kitchen/diner, study, ground floor bedroom and a modern shower room. Upstairs offers **two further double bedrooms and a family bathroom, with plentiful, useful eaves storage.**

Externally, the property benefits from **gardens to three sides**, an **enclosed rear garden** with raised patio, **driveway parking for several vehicles**, and an **attached garage**. Internal viewing is highly recommended to appreciate the spacious interior and excellent location.

Key Features

- Detached home in excellent 'move in' condition Good sized, private rear garden with West facing raised patio
- Large dual aspect lounge and spacious kitchen/dining area, ideal for entertaining
- Versatile accommodation - Study can also be utilised as bedroom 4
- Established gardens to three sides
- Driveway parking for several vehicles
- Short commuting distance to major motorway Internal viewing highly recommended networks
- Short walk to Stockton Heath village and amenities, plus Bridgewater High School
- Immaculately presented throughout



TOTAL FLOOR AREA: 1712 sq.ft. (159.1 sq.m.) approx.

Whilst every attempt has been made to ensure the accuracy of the floorplan contained here, measurements of doors, windows, rooms and any other items are approximate and no responsibility is taken for any error, omission or mis-statement. This plan is for illustrative purposes only and should be used as such by any prospective purchaser. The services, systems and appliances shown have not been tested and no guarantee as to their operability or efficiency can be given.

Made with Metropix ©2026