



Flat 1 Alma House , Alma Street, Mountfields, Shrewsbury, Shropshire, SY3 8QT

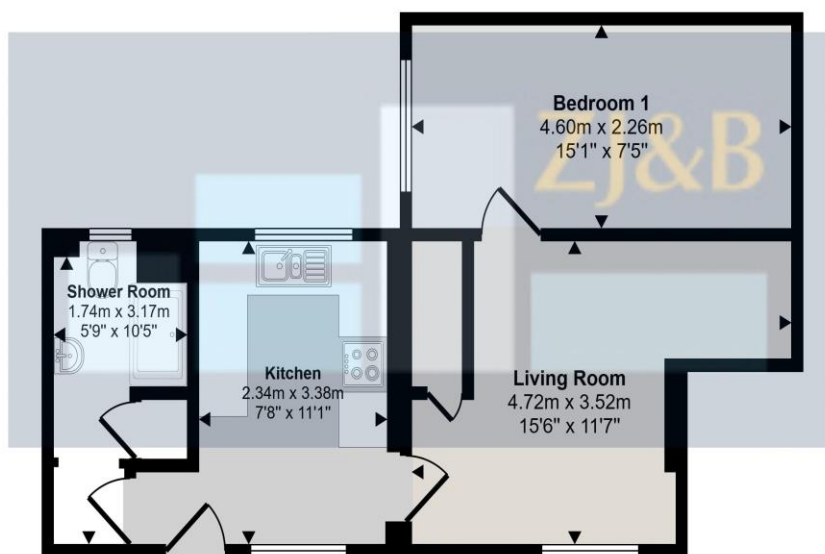
£120,000

An impressive, refurbished, one-bedroom, ground floor apartment in a fantastic location close to the town centre and riverside walks.



An impressive, one-bedroom, ground floor apartment which enjoys the rare benefit of having its own private entrance. Since purchasing in 2020, the current owner has carried out a full refurbishment of the property. The location is one of the apartments key assets, in a sought after setting close to the town centre, Theatre Severn and a variety of restaurants, clubs and riverside walls. The accommodation starts with an entrance lobby leading through to the kitchen which has been fully refitted with a range of contemporary units, ample space for appliances and 2 double glazed windows. The living room has a contemporary heater and window to the front and a useful recess with book shelving/recess which would make an ideal study area. There is an exceptionally spacious double bedroom, again with a contemporary heater and the shower room has been fully refitted offering a large shower cubicle, wash basin with cupboard beneath and WC. The airing cupboard has a new hot water cylinder with store cupboard above. Outside there is a communal drying and seating area. . The property is leasehold with 153 years remaining on the lease (expiring on 31/05/2179). Ground rent included in the service charge and is £85 per month.

Approx Gross Internal Area
39 sq m / 421 sq ft



Floorplan

This floorplan is only for illustrative purposes and is not to scale. Measurements of rooms, doors, windows, and any items are approximate and no responsibility is taken for any error, omission or mis-statement. Icons of items such as bathroom suites are representations only and may not look like the real items. Made with Made Snappy 360.

FLOOR PLANS FOR GUIDANCE ONLY



Find an energy certificate (/)

English | [Cymraeg](#)

Energy performance certificate (EPC)

Flat 1 Alma House Alma Street SHREWSBURY SY3 8QT	Energy rating E	Valid until: 10 July 2028
		Certificate number: 0254-2890-7233-9198-8635

Property type Ground-floor flat

Total floor area 42 square metres

Rules on letting this property

Properties can be let if they have an energy rating from A to E.

You can read [guidance for landlords on the regulations and exemptions](https://www.gov.uk/guidance/domestic-private-rented-property-minimum-energy-efficiency-standard-landlord-guidance) (<https://www.gov.uk/guidance/domestic-private-rented-property-minimum-energy-efficiency-standard-landlord-guidance>).

Energy rating and score

This property's energy rating is E. It has the potential to be C.

[See how to improve this property's energy efficiency.](#)

These are the notes referred to on the following official copy

The electronic official copy of the title plan follows this message.

Please note that this is the only official copy we will issue. We will not issue a paper official copy.

This official copy was delivered electronically and when printed will not be to scale. You can obtain a paper official copy by ordering one from HM Land Registry.

This official copy is issued on 30 June 2026 shows the state of this title plan on 30 June 2026 at 11:33:27. It is admissible in evidence to the same extent as the original (s.67 Land Registration Act 2002). This title plan shows the general position, not the exact line, of the boundaries. It may be subject to distortions in scale. Measurements scaled from this plan may not match measurements between the same points on the ground. This title is dealt with by the HM Land Registry, Telford Office .

Council Tax Band A

Tenure: Our client advises us that the property is Leasehold. Should you proceed with the purchase of the property, these details must be verified by your solicitor.

NB: The mention of any appliances and/or services within these sales particulars does not imply that they are in full and efficient working order.

Viewing: To arrange a viewing call in at our office or telephone **01743 248351**

FREE MORTGAGE ADVICE

Whether you are a first-time buyer, moving home, buying as an investor or looking to save on your mortgage payments, you could benefit from some **free** no obligation mortgage advice.

Contact **Stephen Bath** of Bee Mortgages, who is based at our office

01743 248351

Whole of Market clear and relevant tailored to your individual needs and circumstances.

Your home may be repossessed if you do not keep up repayments on your mortgage