



Mather Estates welcomes to the market this well-maintained one-bedroom, unfurnished ground floor maisonette, ideally situated in the popular Bedwell area of Stevenage. The property comprises a living/dining area, fitted kitchen with appliances, double bedroom and bathroom. The property further benefits ample storage, a private rear enclosed garden with an external storage unit and on street parking.

The initial tenancy length is 12 months minimum.

A holding deposit of one weeks rent £282.69 is required upon acceptance of an application, this will be deducted from your first months rent should referencing be successful.

Security deposit total- £1,413.46.



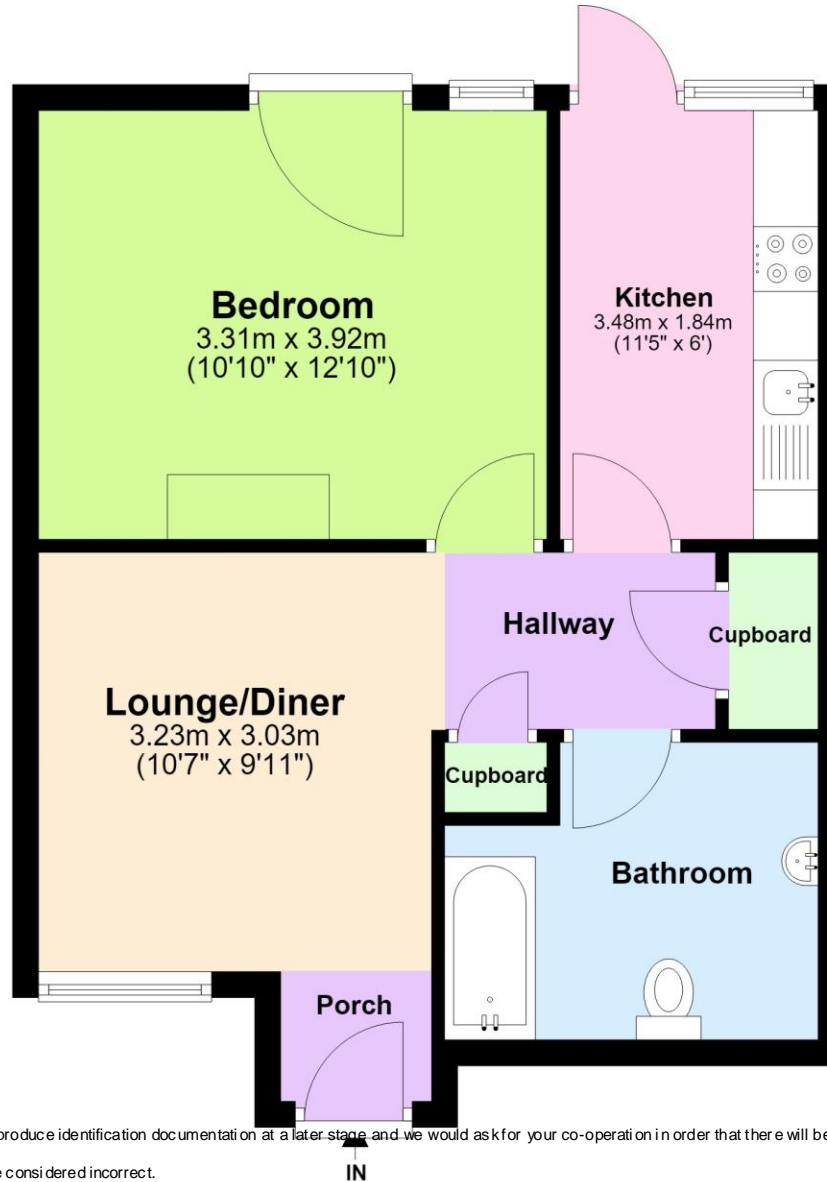




Score	Energy rating	Current	Potential
92+	A		
81-91	B		
69-80	C	73 C	75 C
55-68	D		
39-54	E		
21-38	F		
1-20	G		

Ground Floor

Approx. 42.5 sq. metres (457.4 sq. feet)



1. MONEY LAUNDERING REGULATIONS - Intending purchasers will be asked to produce identification documentation at a later stage and we would ask for your co-operation in order that there will be no delay in agreeing the sale.

2. These particulars do not constitute part or all of an offer or contract.

3. The measurements indicated are supplied for guidance only and as such must be considered incorrect.

4. Potential buyers are advised to recheck the measurements before committing to any expense.

5. Mather Estates has not tested any apparatus, equipment, fixtures, fittings or services and it is the buyers interests to check the working condition of any appliances.

6. Mather Estates has not sought to verify the legal title of the property and the buyers must obtain verification from their solicitor.

Total area: approx. 42.5 sq. metres (457.4 sq. feet)