



**OVER 60?**

Secure this property  
for up to **59% less!**

**Guide Price**  
**£395,000**

**Freehold**

2x  1x  1x 

**Parkfield Road,  
Rainham, Gillingham,  
Kent, ME8**

*Wards*  
Helping you move forwards



## Main features

- Wonderful extended property
- Separate dining area and open plan to the lounge
- Quality fitted kitchen and useful utility room
- Driveway to front with side access
- No onward chain

## Accommodation

### GROUND FLOOR

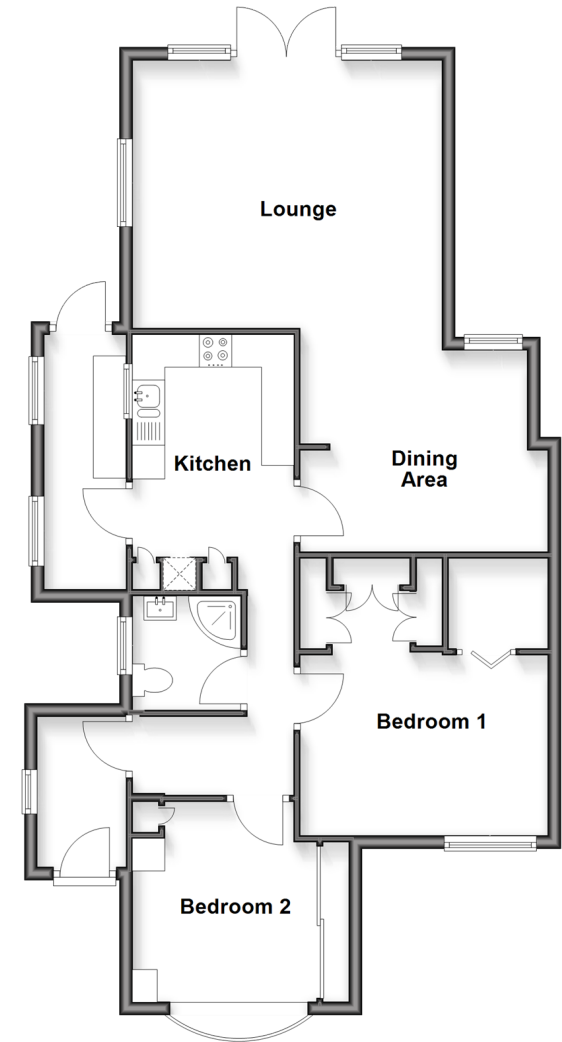
- Porch
- Entrance Hall
- Dressing Area
- Bedroom 1 : 12'9 x 12'5 (3.89m x 3.79m)
- Bedroom 2 : 12'5 x 9'8 (3.79m x 2.95m)
- Showers Room
- Kitchen : 15'5 x 8'9 (4.70m x 2.67m)
- Utility Room
- Dining Area : 11'5 x 10'7 (3.48m x 3.23m)
- Lounge : 15'9 x 14'2 (4.80m x 4.32m)
- Utility Area

### OUTSIDE

- Rear Garden
- Driveway

### Ground Floor

Approx. 86.0 sq. metres (925.9 sq. feet)



Call Rainham - 01634 373531 ■ [wardsof Kent.co.uk](http://wardsof Kent.co.uk)

- If buying to rent, please check if Local Authority licensing schemes apply before proceeding
- Through a Homewise Home For Life Plan people aged 60+ can secure this property for up to 59% less, by purchasing a Lifetime Lease



11333357/20260603/CW/GG