



*jordan fishwick*

23 Caldy Road, SK9 3BY  
Guide Price £334,950



## Caldy Road Handforth SK9 3BY

Guide Price £334,950



No Onward Chain. A fantastic opportunity to acquire this well proportioned, two bedroom detached bungalow, ideally situated within easy reach of Handforth village. Handforth village is just a short stroll away with its various shops, amenities and train station alike. The property in brief comprises a private entrance porch with handy storage cupboard and leads directly to the generously proportioned living/dining space with feature bay window overlooking the front garden. Worthy of note is the characterful exposed brick fire place adding style to the home. The kitchen space accommodates modern wall and base units with complementary worktops, a handful of integrated appliances and breakfast bar space for more casual dining. The home boasts two double bedrooms to the rear, both benefiting from fitted wardrobes and views of the rear garden. The family bathroom is complete with a three piece white bathroom suite. Externally, the property benefits from impressive gardens to the front and rear, both mostly laid to well maintained lawns. There is a driveway offering parking for multiple vehicles, as well as exclusive and private parking in the enclosed carport, half of which is sheltered. Viewings essential.



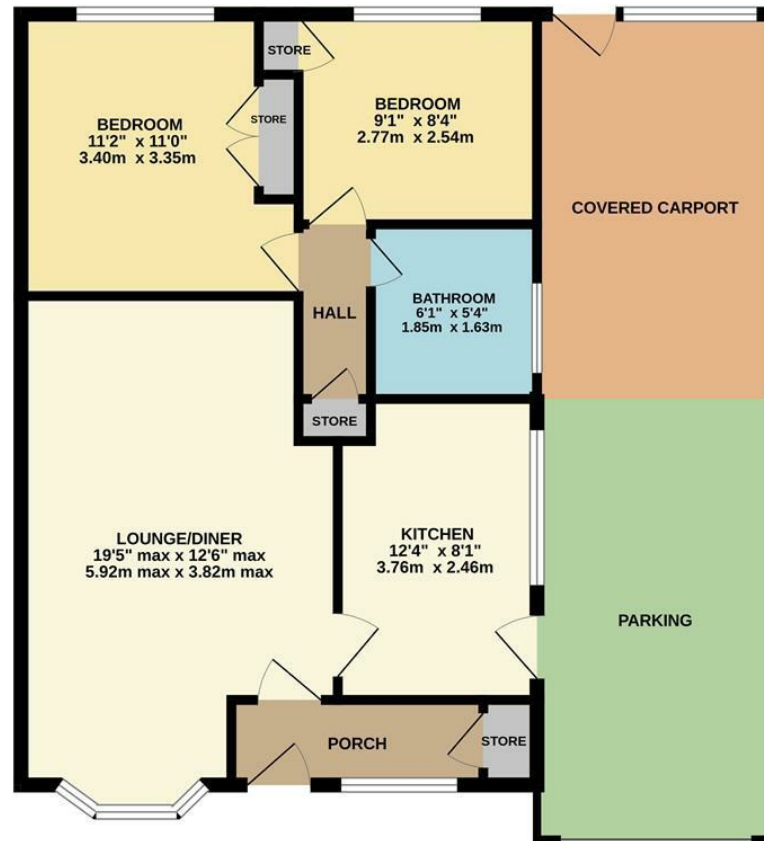
- No Chain
- Two Double Bedrooms
- Detached Bungalow
- Handforth Village Location
- Off Road Parking
- Enclosed Carport
- Impressive Gardens



Energy Efficiency Rating		
	Current	Potential
Very energy efficient - lower running costs		
(92 plus) <b>A</b>		
(81-91) <b>B</b>		
(69-80) <b>C</b>		
(55-68) <b>D</b>		
(39-54) <b>E</b>		
(21-38) <b>F</b>		
(1-20) <b>G</b>		
Not energy efficient - higher running costs		
<b>England &amp; Wales</b>	EU Directive 2002/91/EC	



## GROUND FLOOR



Measurements are approximate. Not to scale. Illustrative purposes only.  
Made with Metropix ©2025



These particulars are believed to be accurate but they are not guaranteed and do not form a contract. Neither Jordan Fishwick nor the vendor or lessor accept any responsibility in respect of these particulars, which are not intended to be statements or representations of fact and any intending purchaser or lessee must satisfy himself by inspection or otherwise as to the correctness of each of the statements contained in these particulars. Any floorplans on this brochure are for illustrative purposes only and are not necessarily to scale.

Offices at: Chorlton, Didsbury, Disley, Hale, Glossop, Macclesfield, Manchester Deansgate, Manchester Whitworth Street, New Mills, Sale, Wilmslow and Withington

36-38 Alderley Road, Wilmslow SK91JX  
**01625 532000**

wilmslow@jordanfishwick.co.uk  
www.jordanfishwick.co.uk