

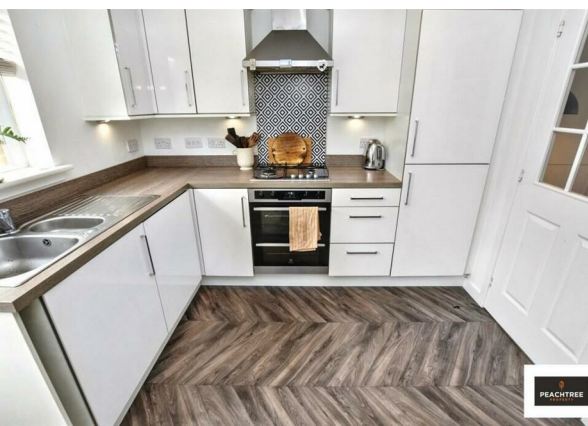
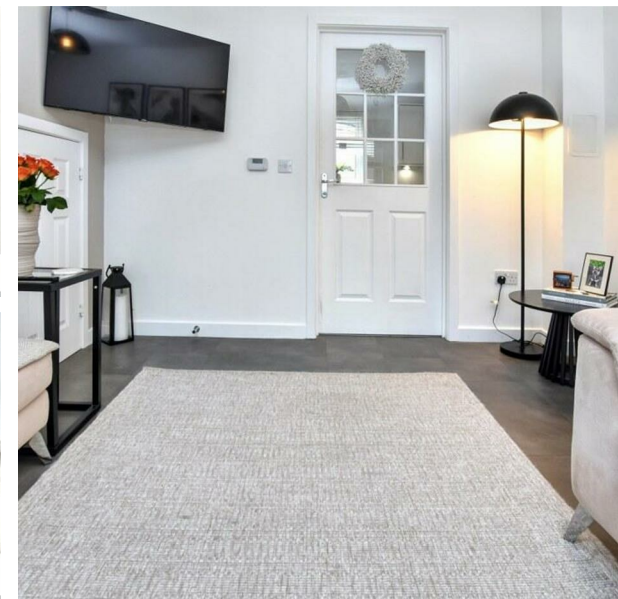
15 Craigmuir Road, Bishopton, PA7 5RA

Offers Over £184,995

EPC Rating: C Council Tax Band: D



**PEACHTREE**  
PROPERTY



Peachtree Property are thrilled to welcome to the market this delightful two bedroom terraced house on Craigmuir Road which offers a perfect blend of modern living and comfort.

The property on offer is in well-appointed order and comprises a spacious reception room with access to the upper floor, a modern kitchen/diner and WC. The upper floor houses two well-proportioned bedrooms and a family bathroom.

Externally the property offers allocated parking and an enclosed rear garden perfect for small families and pets.

The location in Bishopton is particularly appealing, offering a friendly community atmosphere while being conveniently close to local amenities. Residents can enjoy easy access to shops, parks, and transport links, making it an excellent choice for those who commute or enjoy exploring the surrounding areas.



28 Hairst Street Hairst St

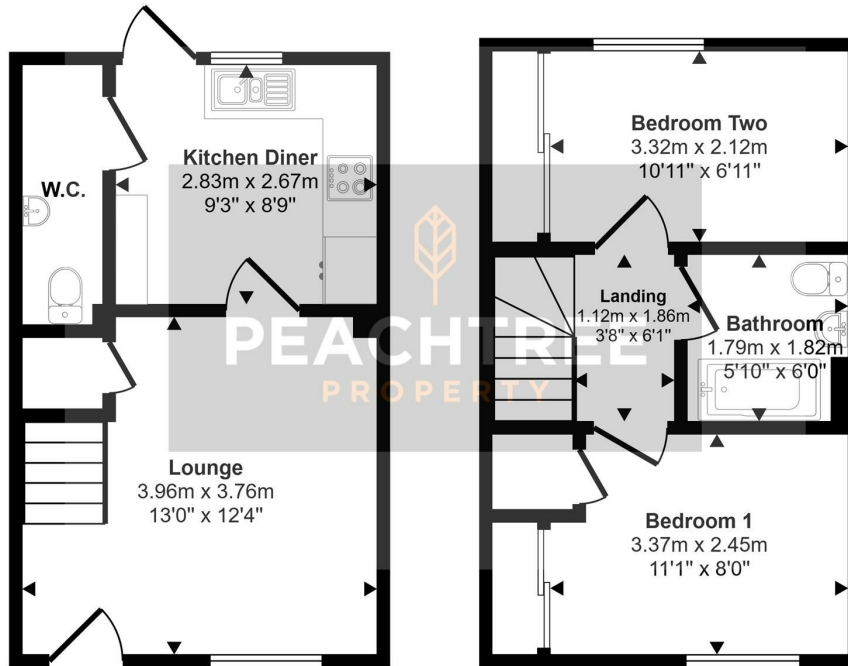
Renfrew

PA4 8QY

0141 577 1111

info@peachtreeproperty.co.uk

Approx Gross Internal Area  
53 sq m / 569 sq ft



Ground Floor  
Approx 26 sq m / 280 sq ft

First Floor  
Approx 27 sq m / 289 sq ft

This floorplan is only for illustrative purposes and is not to scale. Measurements of rooms, doors, windows, and any items are approximate and no responsibility is taken for any error, omission or mis-statement. Icons of items such as bathroom suites are representations only and may not look like the real items. Made with Made Snappy 360.

