



Ruth Close, Farnborough, Hants, GU14 9UX

£1,350 PCM

A lovely two bedroom semi-detached home situated on the popular Barningly Park development in Farnborough offering easy access to local shops and schools. The accommodation comprises an entrance hall with cloakroom, lounge/dining room and modern kitchen on the ground floor whilst the first floor offers two double bedrooms and a bathroom.

Outside there is a low maintenance enclosed garden to the rear, plus a driveway and a single garage to the front.

Unfurnished and available 23rd May 2026

Council tax band: D

EPC rating: D

Minimum tenancy length - 12 months with a 6 month break clause

Deposit = 5 weeks rent - £1,557

First Months rent - £1,350

Holding deposit - £311 (will be deducted from the first months rent upon move in)

Luff
ASSOCIATES
letting specialists

- Semi detached house
- Two double bedrooms
- Modern kitchen
- Private rear garden
- Garage
- Driveway
- Unfurnished
- Excellent location for the M3

Viewing

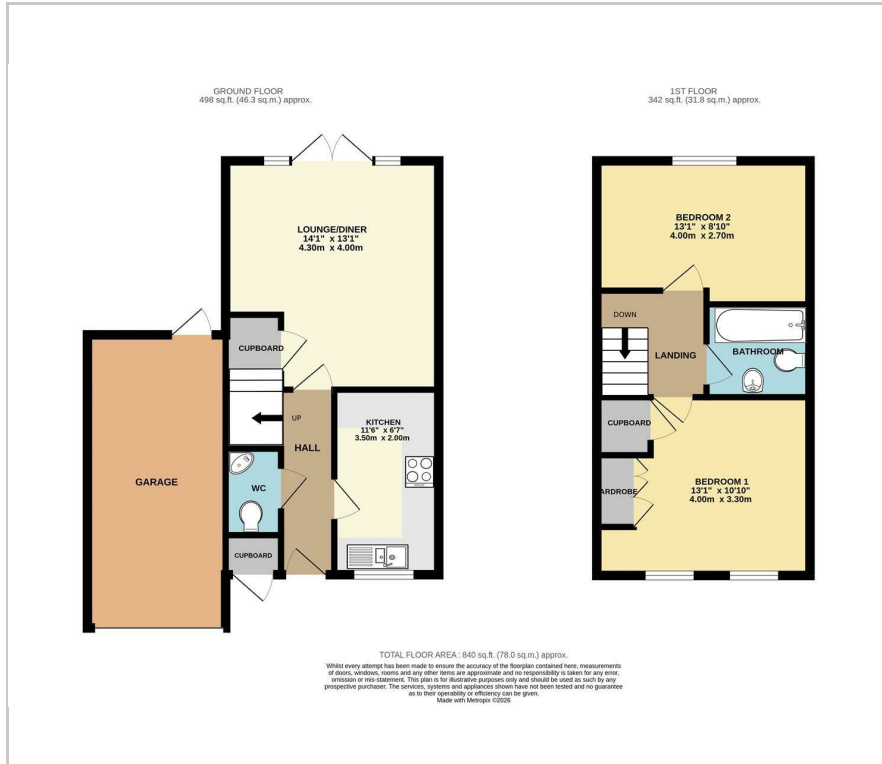
Please contact our Luff Associates Ltd. Office on 01252 834949

if you wish to arrange a viewing appointment for this property or require further information.

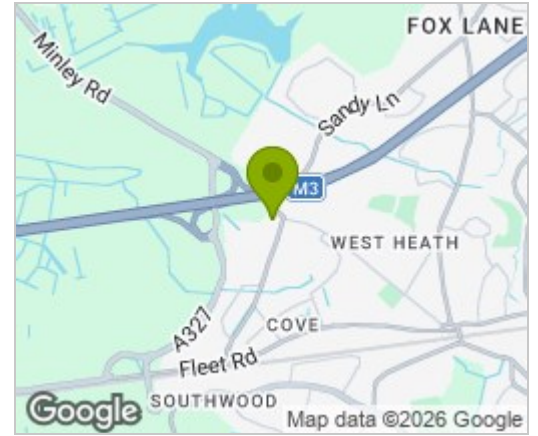


1a Guildford Road, Frimley Green, Camberley, Surrey, GU16 6NL
Tel: 01252 834949 admin@luff-associates.com www.luff-associates.com

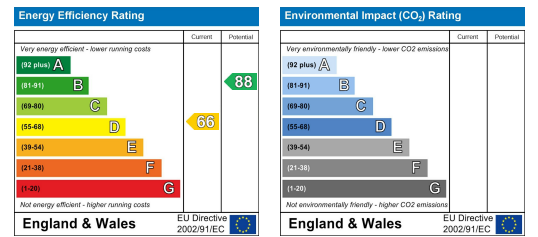
Floor Plan



Area Map



Energy Efficiency Graph



In partnership with
LUFF & WILKIN
sales 01252 838 899

Disclaimer: The Rent advertised does not include the Tenancy Deposit or any fee's or charges which are payable. Further information can be obtained from the agent or at the point of viewing. These details have been prepared and issued in good faith and do not constitute representations of fact or form part of any offer or contract Luff Associates Ltd have not carried out a structural survey of the property, nor have we tested any of the services or appliances. All measurements are intended to be approximate only and all photographs show parts of the property as they were at the time they were taken. Any reference to alterations or particular use of the property wherever stated, is not a statement that planning, building regulations or other relevant sent has been obtained