



3 Chestnut Gardens

Sherburn in Elmet, LS25 6EX

Offers In The Region Of £475,000

A superbly presented and handsome family home radiating historic charm, original features and contemporary luxury 'The Barn' presents an exceptional opportunity to acquire a beautifully appointed detached house.

This splendid property boasts five spacious bedrooms, including a principal suite complete with a dressing area, ensuring ample space for relaxation and privacy.

The home features two inviting reception rooms, perfect for entertaining guests or enjoying quiet family time. With three well-designed bathrooms, convenience and comfort are at the forefront of this luxurious residence. The interior is impeccably presented, showcasing a blend of modern elegance and traditional charm that is sure to impress.

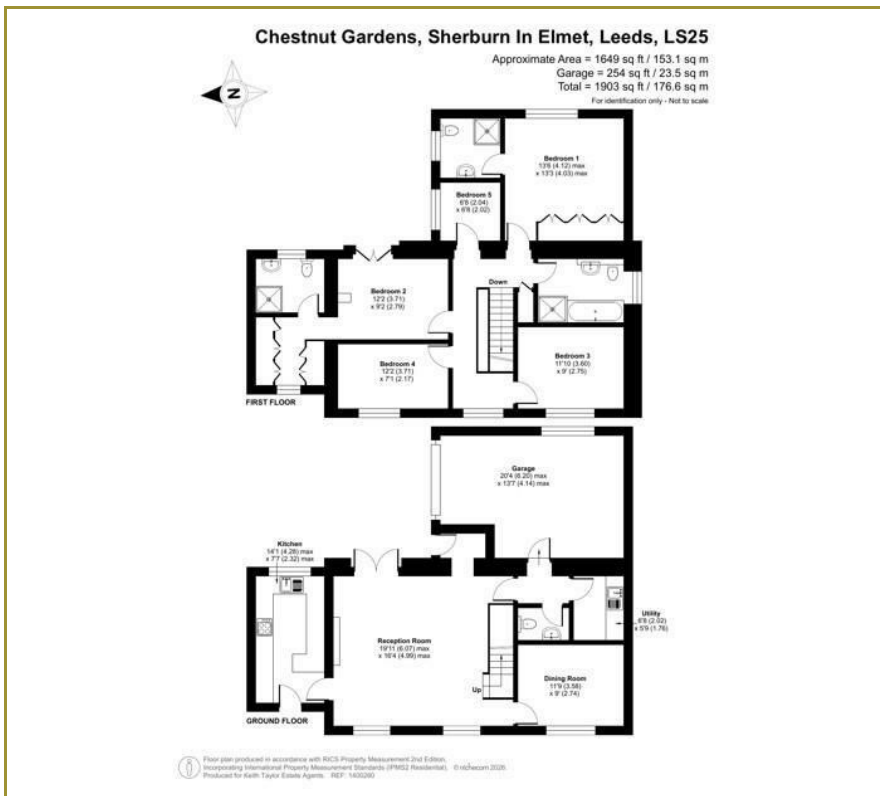
For those with vehicles, the property offers parking for up to three cars, a valuable asset in this desirable location. The village itself is well-connected, with a train station providing easy access to the vibrant cities of York and Leeds, making it an ideal choice for commuters.

Chestnut Gardens is not just a house; it is a home that embodies a lifestyle of comfort and sophistication. With its prime location and luxurious features, this property is a rare find in the market. Do not miss the chance to make this exquisite residence your own.

- Luxurious Detached Barn Style Property
- 5 Bedrooms
- 3 Bathrooms
- Stylishly Presented Internally
- Some Lovely Original Beams and Features
- Garage and EV Charging Point
- Garden Kitchen with Patio and Lawned Area
- In the Heart of Sherburn In Elmet
- Gated Entrance
- Utility Room



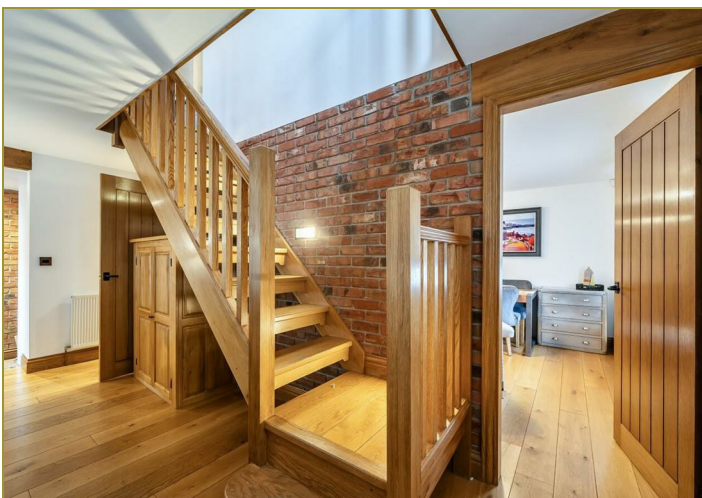
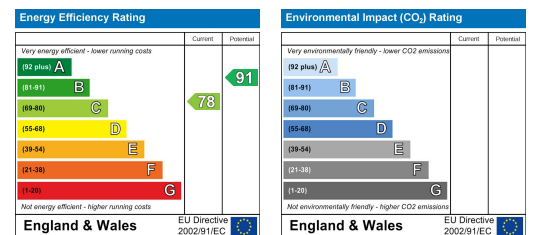
Floor Plan



Area Map



Energy Efficiency Graph



These particulars, whilst believed to be accurate are set out as a general outline only for guidance and do not constitute any part of an offer or contract. Intending purchasers should not rely on them as statements of representation of fact, but must satisfy themselves by inspection or otherwise as to their accuracy. No person in this firm's employment has the authority to make or give any representation or warranty in respect of the property.

Keith Taylor

56 Gowthorpe, Selby, North Yorkshire, YO8 4ET
 Tel: 01757 709457 Email: sales@keithtaylorproperty.co.uk
 www.keithtaylorproperties.co.uk