



**26 Whitehall Drive, Leeds**

Offers Over **£80,000**





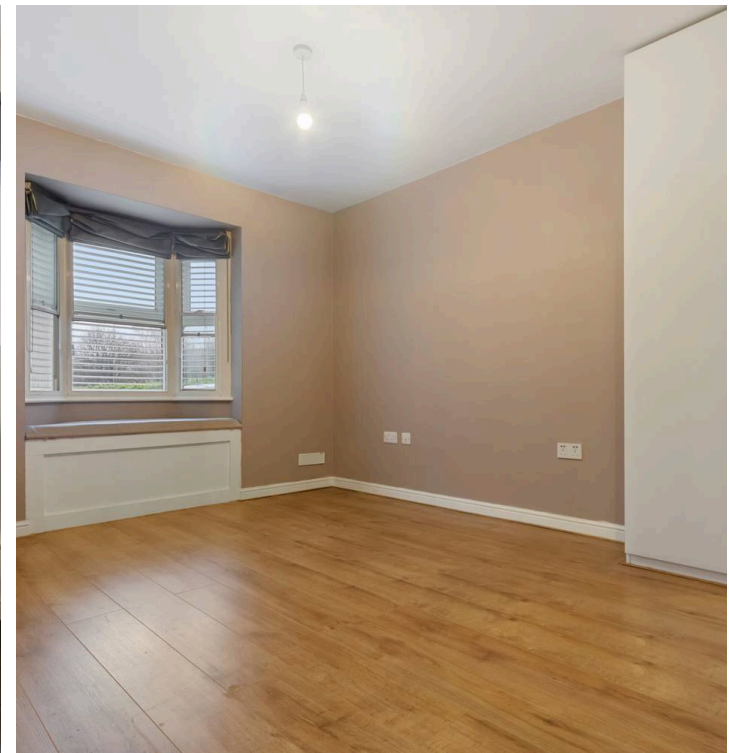
# 26 Whitehall Drive

Leeds, Leeds

Council Tax band: A

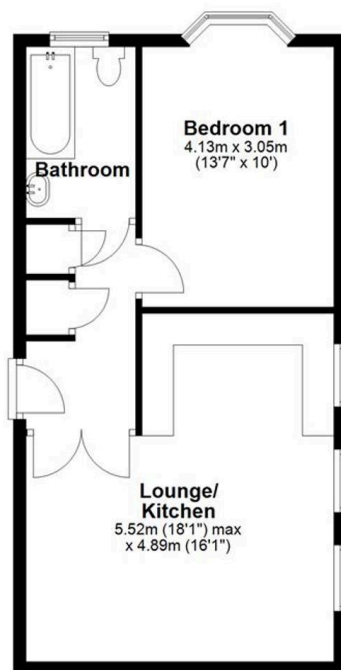
Tenure: Leasehold

- Off-road parking
- Open plan living area
- Well-maintained communal gardens
- Vacant possession
- Rental potential of £650 PCM
- Ideal links to Leeds City Centre
- Motorway links
- Priced to sell



### Ground Floor

Approx. 49.0 sq. metres (527.1 sq. feet)



Total area: approx. 49.0 sq. metres (527.1 sq. feet)



## Aspire Estates

Aspire Properties, Wira Business Park Ring Road - LS16 6EB

0113 863 1446

[estatesales@aspirepropertygroup.co.uk](mailto:estatesales@aspirepropertygroup.co.uk)

[www.aspirepropertygroup.co.uk/](http://www.aspirepropertygroup.co.uk/)