



Greenleaf Walk, UB1

£1,675 Per calendar month

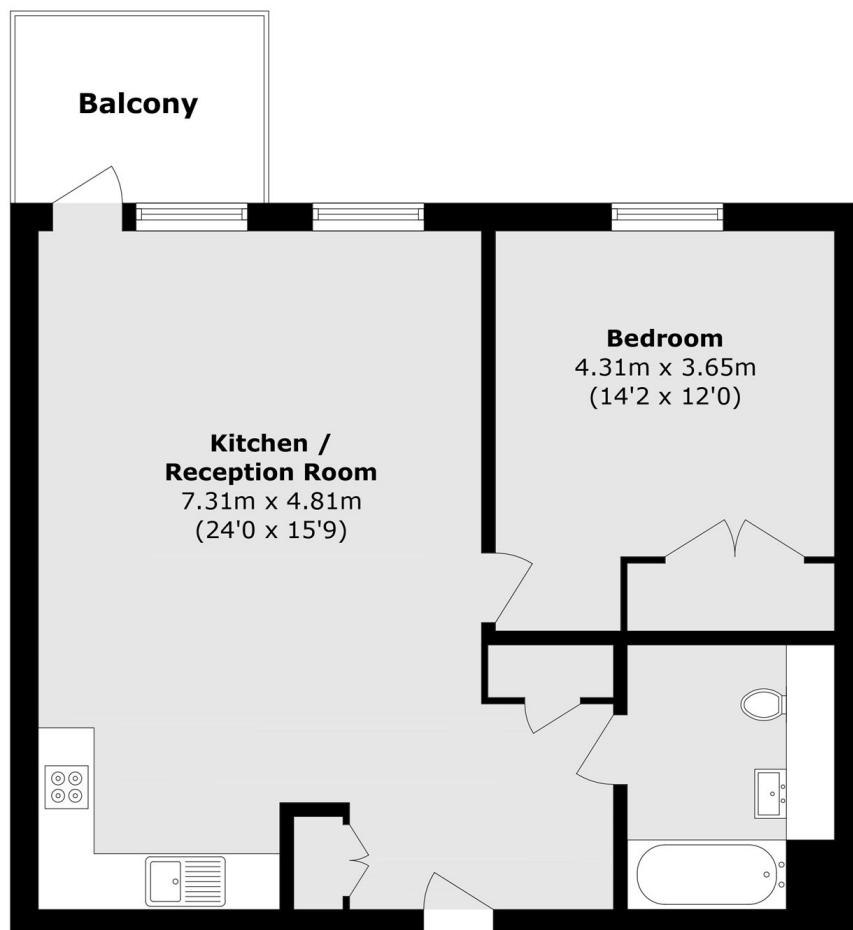
A stylish one-bedroom apartment featuring a spacious open-plan living area, modern furnishings, and contemporary finishes. Residents benefit from exclusive access to a gym and concierge service.

Southall Station is a short walk away, with the Elizabeth Line providing fast, direct connections to Central London, Canary Wharf, and Heathrow Airport,

Features

- One Bedroom
- Spacious Living Room
- Open Plan
- Furnished
- Gym
- Concierge

Greenleaf Walk, SOUTHALL, UB1



Total area (approx.): 62.6 sq. m (673.8 sq. ft)
Balcony area (approx.): 5.4 sq. m (58.1 sq. ft)