




CHRIS MACSWEENEY POWERED BY **exp** TM UK

@ [chris.macsweeney@exp.uk.com](mailto:chris.macsweeney@exp.uk.com)

 [chrismacsweeney.exp.uk.com](http://chrismacsweeney.exp.uk.com)

 07468 48 88 18



## Wheat Hill, Letchworth, Hertfordshire

£430,000

🛏 2 🚿 1 🚗 1

- NO UPPER CHAIN
- A Short Walk to Norton Common
- Bay Fronted Lounge
- Large and Beautifully Maintained Rear Garden
- Quote Reference CM0245
- Tranquil No-Through Road Location
- Two Good Sized Bedrooms
- Double Glazed and Gas Central Heating
- Potential to Further Extend (Subject to Relevant Permissions)

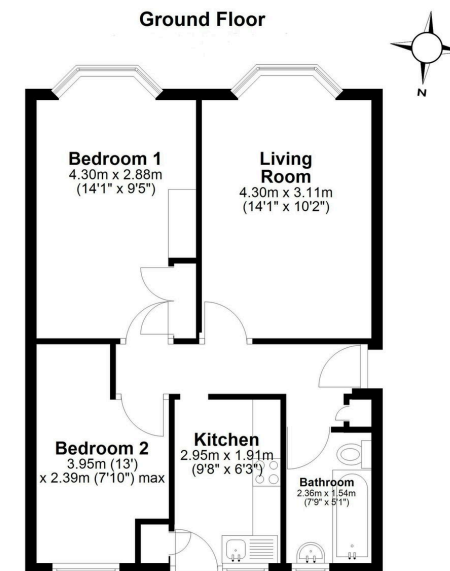


NO UPPER CHAIN. Wheat Hill is a sleepy, no-through road in a highly sought-after part of Letchworth, adjacent to Norton Common and placed a convenient distance from the town centre and train station. The accommodation comprises of an entrance hall, a bay fronted lounge, fitted kitchen, two good sized bedrooms and bathroom. Outside presents a large and beautifully maintained rear garden. Terrific potential to extend (subject to relevant permissions) Quote Reference CM0245









Score	Energy rating	Current	Potential
92+	A		
81-91	B		
69-80	C		80 C
55-68	D	62 D	
39-54	E		
21-38	F		
1-20	G		

eXp World UK Ltd is a registered company at Level 37, 25 Canada Square, London, E14 5LQ.

Registered company number is 12016573. VAT Registration Number is 327 4120 29