



54 HILLCREST ROAD,
PORTISHEAD, BS20 8HP

**GOODMAN
& LILLEY**







54 HILLCREST ROAD

PORTISHEAD BS20 8HP

GUIDE PRICE
£550,000

A charming detached elevated bungalow, perfectly positioned in a sought-after location, enjoying breathtaking estuary views to the front. The property boasts a private, level rear garden, ideal for relaxation or entertaining, along with generous off-road parking and a double garage. Offered to the market with no onward chain, this home presents an excellent opportunity to secure a property in a truly desirable setting.

The property is approached via a generous double driveway, leading to a spacious double garage with an electric door. A set of steps takes you to the welcoming front porch, which itself enjoys a captivating outlook over the estuary.

Local Authority: North Somerset Council Tel: 01934 888888

Council Tax Band: E

Services: Mains; Electric, Water, Drainage.

Inside, the heart of the home is the impressive lounge/dining room, where wall-to-wall glass sliding doors frame the stunning water views and provide direct access to an attached balcony – the perfect spot to soak up the scenery. The kitchen is positioned at the rear, offering views over and access to the delightful private garden, ideal for those who enjoy both cooking and the outdoors.

All viewings strictly by appointment with sole agent Goodman & Lilley: 01275 430440

There are three bedrooms in total: two located at the rear overlooking the peaceful garden, and a generously sized master bedroom at the front, complete with built-in wardrobes, a bay window, and exceptional estuary views. The accommodation is completed by a well-appointed family bathroom and a separate WC.

Whilst the property has been immaculately maintained, it is brimming with potential for a new owner to modernise or re-imagine the space to suit their own tastes and lifestyle.

With its unbeatable outlook, generous proportions, and scope for personalisation, this home represents a rare opportunity in a truly desirable setting.

Additional information

Tenure: freehold

- Three Bedroom Detached Bungalow
- Elevated Position
- Fantastic Estuary Views
- Lounge/Diner With Balcony
- Kitchen With Garden Access
- Private, Level Rear Garden
- Double Driveway
- Double Garage
- Bursting With Potential
- No Onward Chain





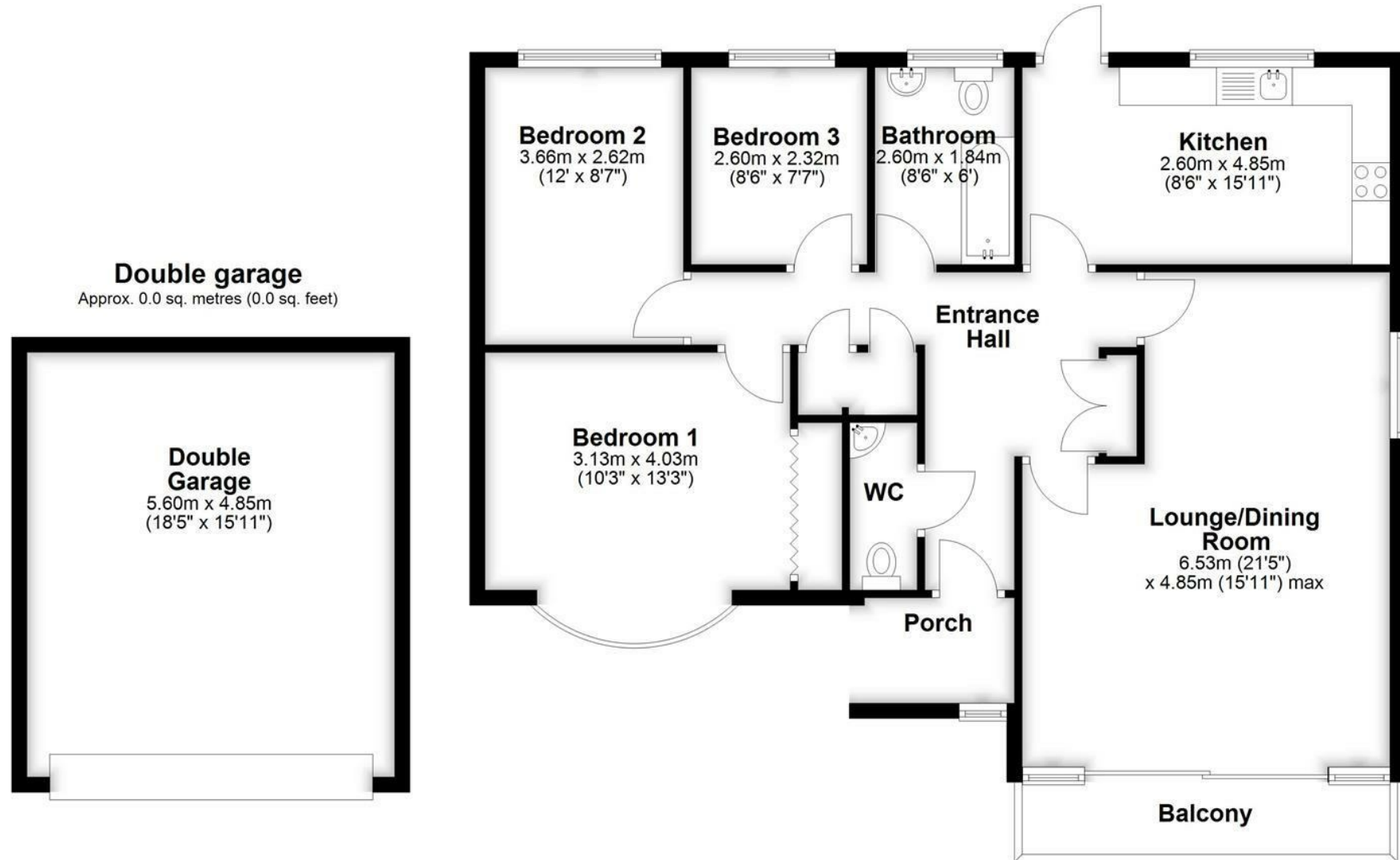


GOODMAN
& LILLEY



Ground Floor

Approx. 97.1 sq. metres (1044.7 sq. feet)



Total area: approx. 97.1 sq. metres (1044.7 sq. feet)

HENLEAZE

156 Henleaze Road
Henleaze BS9 4NB
henleaze@goodmanlilley.co.uk

0117 213 0777

PORTISHEAD

36 High Street
Portishead BS20 6EN
sales@goodmanlilley.co.uk

01275 430 440

SHIREHAMPTON

9 High Street
Shirehampton BS11 0DT
shire@goodmanlilley.co.uk

0117 213 0333

LETTINGS

lettings@goodmanlilley.co.uk

01275 299 010

0117 213 0101

LAND & NEW HOMES

156 Henleaze Road
Henleaze BS9 4NB
LNH@goodmanlilley.co.uk

0117 213 0151



These particulars are for general guidance only. They do not form or constitute any part of an offer or contract. Goodman & Lilley has not carried out structural surveys of the property. The services, appliances or specific fittings mentioned in these details have not been tested. Every attempt is made to ensure accuracy, however all photographs, measurements, floor plans and distances are for illustrative purposes only. They must not be relied upon when purchasing carpets and or other fixtures & fittings. Lease details, service charges and ground rents are given as a guide only. They should be checked and confirmed by a licensed solicitor prior to exchange of contracts. The copyright of all details, photographs and floor plans remain exclusive to Goodman & Lilley.



rightmove

Zoopla