



OVER 60?

Secure this property
for up to **59% less!**

Guide Price
£550,000

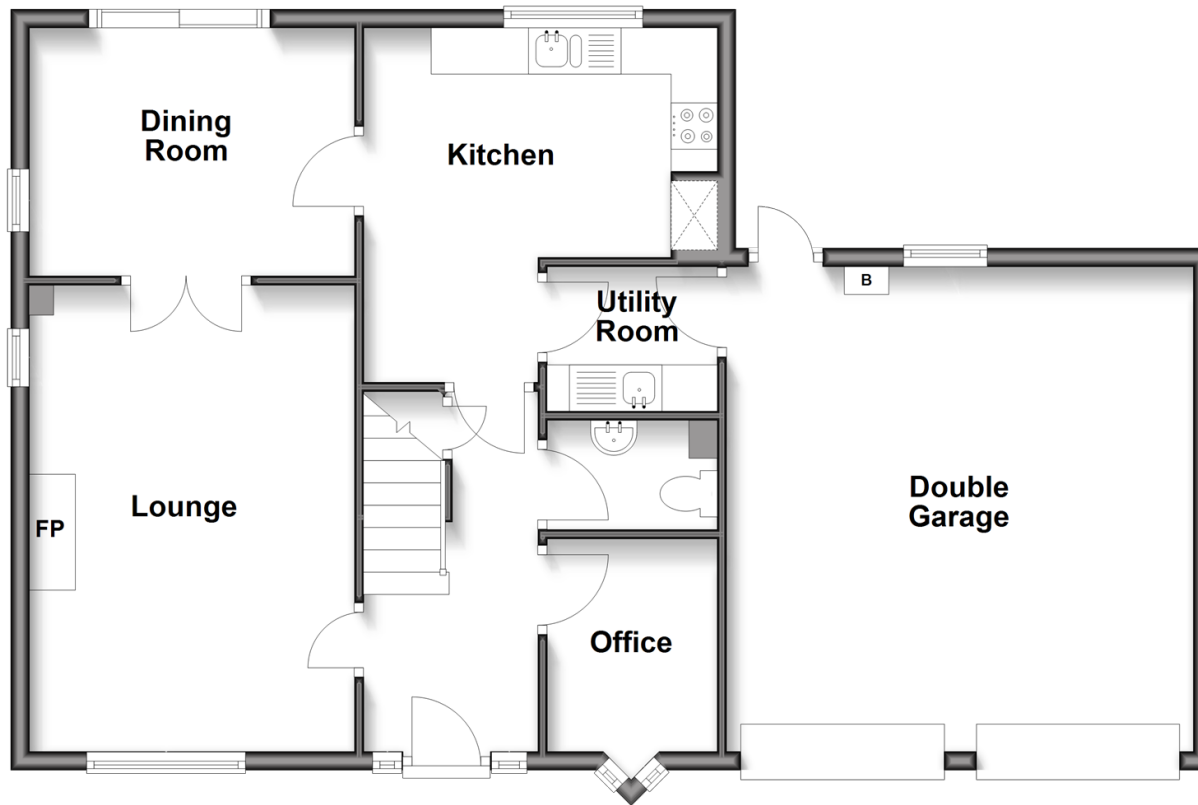
Freehold

4x  2x  1x 

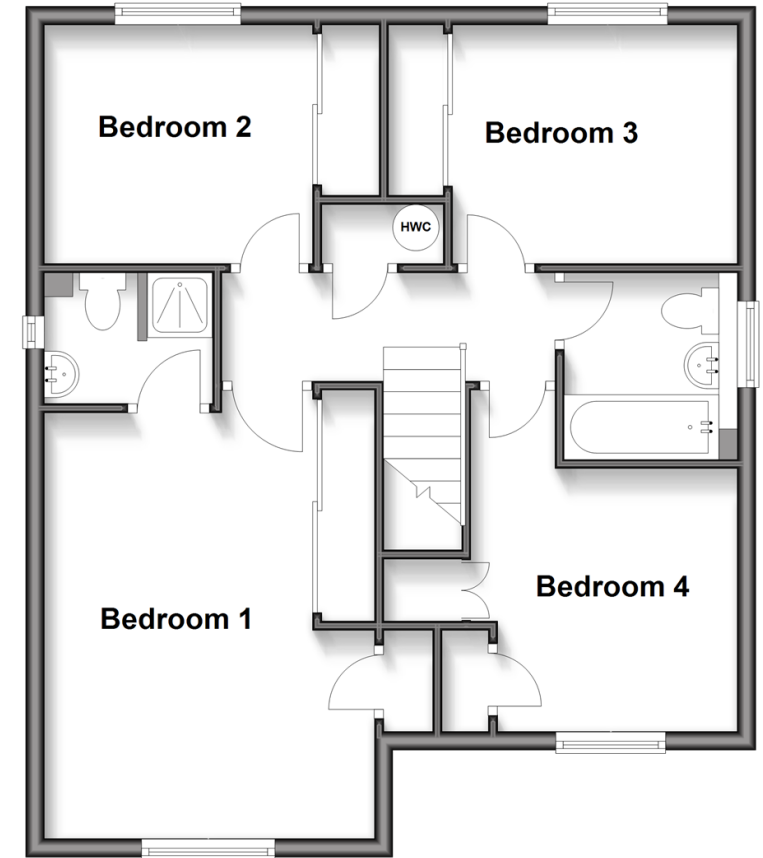
**William Judge Close,
Tenterden, Kent, TN30**

Wards
Helping you move forwards

Ground Floor
Approx. 58.2 sq. metres (626.7 sq. feet)



First Floor
Approx. 61.4 sq. metres (660.4 sq. feet)



Accommodation

GROUND FLOOR

Hall

Lounge: 17'7 x 11'9 (5.36m x 3.58m)

Dining Room: 11'10 x 8'11 (3.61m x 2.72m)

Kitchen: 12'11 x 12'6 (3.94m x 3.81m)

Utility Room: 6'0 x 5'3 (1.83m x 1.60m)

Cloakroom

Office: 8'0 x 6'1 (2.44m x 1.86m)

FIRST FLOOR

Landing

Bedroom 1: 14'2 x 12'0 (4.32m x 3.66m)

En-Suite: 5'9 x 5'2 (1.75m x 1.58m)

Bedroom 2: 12'7 x 8'9 (3.84m x 2.67m)

Bedroom 3: 11'9 x 8'9 (3.58m x 2.67m)

Bathroom: 6'10 x 6'4 (2.08m x 1.93m)

Bedroom 4: 9'4 x 8'0 (2.85m x 2.44m)

OUTSIDE

Double Garage: 18'0 x 16'10 (5.49m x 5.13m)

Front and Rear Garden



Main features

- Spacious 4 bedroom detached house
- Versatile layout to suit multiple generations
- Potential to improve
- Sunny private rear garden
- Double garage and off-road parking
- Quiet, safe and respectable Tenterden location



Nearest Schools

Primary Schools: Tenterden C of E Junior School 1.1 miles, St Michael's C of E Primary (Tenterden) 1.7 miles, High Halden C of E Primary 3.7 miles

Secondary Schools: Homewood School and Sixth Form



Transport Information

Train Stations: Appledore 6.6 miles, Headcorn 7.6 miles, Ham Street 8.4 miles



Address

William Judge Close, Tenterden, Kent, TN30



Directions

For directions to this property please contact us.



Call Tenterden Branch 01580 766002 ■ wardsofkent.co.uk



- Legal advice should be taken to verify fixtures/fittings, planning, alterations and/or lease details
- Appliances & services are untested, dimensions are approximate and floor plans are not to scale
- Through a Homewise Home For Life Plan people aged 60+ can secure this property for up to 50% less, by purchasing a Lifetime Lease.



14007608/20250823/CD/AQ