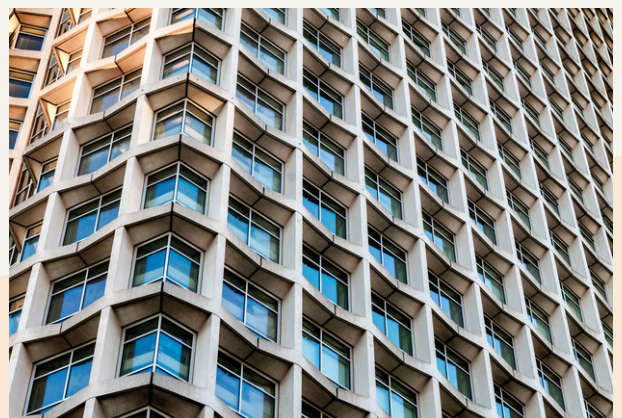




## People Make Places



### Centre Point Residences, St. Giles WC1

2 Bedrooms | 1345 sq ft

£1,700 Per Week





A luxurious two bedroom, two bathroom apartment to rent in the iconic Centre Point Residences, which has access to incredible facilities including a 24-hour concierge, state-of-the-art gym, swimming pool, cinema and members' lounge. Available furnished, from mid August.

#### What you need to know

- Two bedrooms
- Two bathrooms, both ensuite
- Guest cloakroom
- 24-hour concierge
- Pool, gym, cinema room
- Furnished
- Air conditioned
- Eighth floor with lift
- Available mid August
- Next to Tottenham Court Road tube



**Centre Point Residences, St. Giles WC1**





#### Overview

Boasting access to some of the best facilities in the West End, Centre Point Residences has fast become one of the most sought-after residential buildings. Tenants have access to a 24-hour concierge, state-of-the-art gym, swimming pool, cinema and members' lounge. This two bedroom apartment is positioned on the eighth floor, with lift access. Both bedrooms are double in size, have useful storage and ensuite facilities. A further guest cloakroom is accessible from the hallway. The open plan living space has a smart white kitchen at one end and ample dining space, providing a natural divide between eating and relaxing.

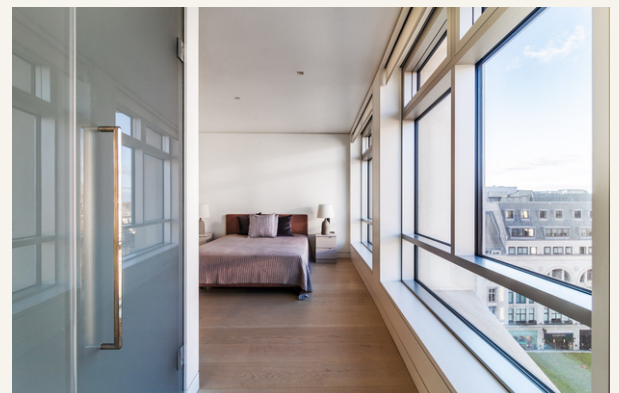
Centre Point is an iconic London landmark perfectly located on the borders of Soho, Oxford Street, Bloomsbury, Fitzrovia and Covent Garden. Arcade Food Hall is next door, a foodie's paradise and home to one of London's most authentic Thai restaurants, Plaza Khao Gaeng.





Several bus routes operate on nearby Oxford Street, Tottenham Court Road and Charing Cross Road, while Tottenham Court Road Underground Station offers tube services within and out of London via the Elizabeth, Central and Northern Lines.

The apartment is available from mid August on a furnished basis. Subject to contract and satisfactory references. Camden Council tax band: F.



**Centre Point Residences, St. Giles WC1**

# People Make Places

London is a collection of inspiring urban villages and one of the most exciting places in the world to live, work & play.

We work with both property owners and their occupiers, sharing the story of these vibrant neighbourhoods, conveying the unique soul & energy to future custodians, the people who'll keep them buzzing.

And unlike many real estate businesses we're not just about buildings, because streets & buildings don't make a neighbourhood.

We're about building relationships, because **people make places**.

MISINTERPRETATION ACT [COPYRIGHT] DISCLAIMER: Tavistock Bow Ltd for themselves and for the vendor(s) of this property whose agents they are, given notice that: 1. These particulars do not constitute, not constitute any part of, an offer or contract. 2. None of the statements contained in these particulars as to the property are to be relied on as statements or representations of fact. 3. Any intending purchaser or lessee must satisfy themselves by inspection or otherwise as to the correctness of each of the statements contained in these particulars. 4. The vendor(s) or lessor(s) do not make or give and neither Tavistock Bow Ltd nor any person in their employment has any authority to make or give any representation or warranty whatever in relation to this property. Finance Act 1989. Unless otherwise stated all prices and rents are quote exclusive of VAT. Property Misrepresentation Act 1991; These details are believed to be correct at the time of compilation but may be subject to subsequent amendment.

Follow us:     @tavistockbow

## Energy Efficiency Rating

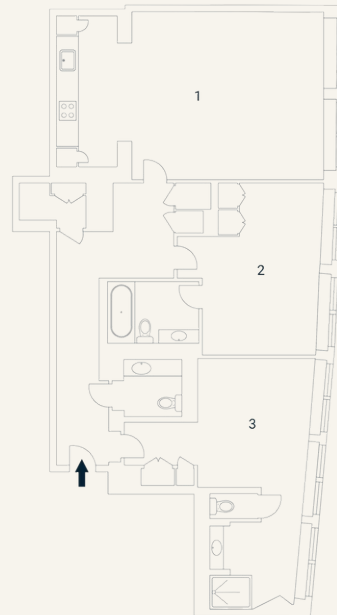
	Current	Potential
<i>Very energy efficient - lower running costs</i>		
(92 plus) <b>A</b>		
(81-91) <b>B</b>	85	85
(69-80) <b>C</b>		
(55-68) <b>D</b>		
(39-54) <b>E</b>		
(21-38) <b>F</b>		
(1-20) <b>G</b>		
<i>Not energy efficient - higher running costs</i>		

Centre Point, WCI

Approximate Gross Internal Area 125 sq m / 1345 sq ft

Eighth Floor

1 Living / 2 Bedroom / 3 Bedroom  
 Kitchen / 4.35 x 5.13M / 5.41 x 3.80M  
 Dining 8.06 x 4.97M / 13'5" x 16'8" / 17'7" x 12'4"  
 26'4" x 16'3"



Floorplan produced for Tavistock Bow. Illustration for identification purposes only and not to scale. All measurements are approximate and not to be relied upon.

**tavistockbow**

21 New Row, Covent Garden,  
 London, WC2N 4LE

t: 020 7477 2177  
 e: hello@tavistockbow.com  
 w: tavistockbow.com



**Centre Point Residences, St. Giles WC1**