



Ballarioghyn House Ballavale Road, Santon, Isle of Man, IM4
1EH

Asking Price £6,500,000

- Elegant Georgian-Inspired Residence set in approximately 19 acres of private grounds with panoramic countryside and sea views in the South of the Isle of Man
- Outstanding Grounds and Amenities including landscaped gardens, paddocks, games wing, treatment room, billiards room, and indoor equestrian arena
- Spacious and Versatile Living with seven luxurious reception rooms including a library, drawing room, and snug, plus a grand domed-ceiling hallway
- Rare Opportunity to acquire a refined, secluded estate offering timeless architecture, vast living space, and superb multi-generational or lifestyle potential
- Four Main House Bedrooms including a stunning principal suite with a south-facing outlook and luxury en-suite, plus a separate two-bedroom guest cottage



Nestled in a private and peaceful countryside setting in the South of the Isle of Man, Ballarioghyn Mansion House is an outstanding Georgian-inspired residence offering exceptional space, seclusion, and timeless elegance. Constructed in 1992 and set within approximately 19 acres, this architectural gem captures sweeping views of the southern coastline, mature parkland gardens, and tranquil paddocks.

A grand approach through a stone portico entrance and imposing double-panelled doors leads into a magnificent reception hall with a soaring 20-foot domed ceiling, detailed cornicing, and polished walnut and oak floors. The property spans a wealth of space, boasting seven formal and informal reception rooms, including a drawing room, library, study, snug, and formal dining area—each adorned with ornate cornices, marble fireplaces, and French doors that open out to the sun terrace and landscaped grounds.

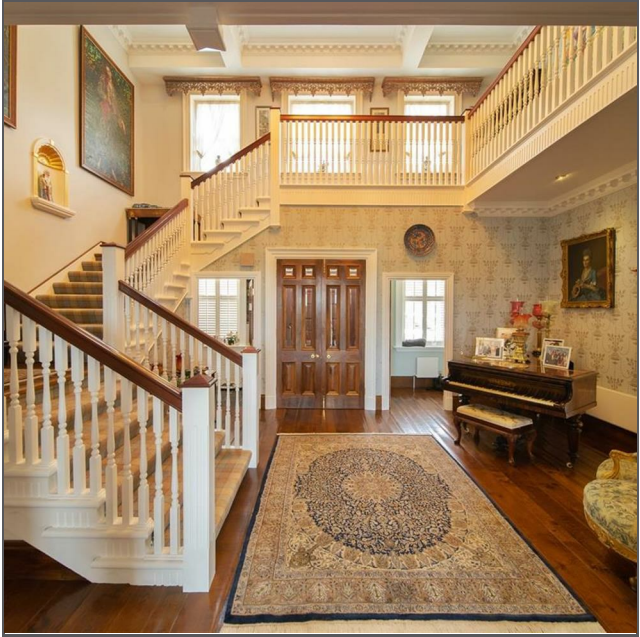
The spacious country kitchen is a blend of character and practicality, featuring a beamed ceiling, mosaic tiled floor, granite drainer, and a traditional oil-fired Aga, with direct access to the terrace for effortless indoor/outdoor living.

Upstairs, the principal bedroom suite enjoys south-facing views over the gardens and distant sea, complemented by a luxurious en-suite bathroom with a freestanding Villeroy & Boch bath. Three further bedrooms—two en-suite—offer ample accommodation, each finished with character flooring and sash windows.

Externally, the grounds include a games wing, billiards room with stone fireplace, treatment room, double car port, and a charming guest cottage with two bedrooms. For equestrian enthusiasts, an indoor arena with an exterior clock tower adds to the estate's rare appeal.

Gravelled driveways, mature planting, and sweeping lawns complete this superb home. Ballarioghyn is a truly special estate offering grandeur, privacy, and lifestyle in equal measure.













Ballarioghyn House Ballavale Road, Santon, Isle of Man, IM4 1EH





DOUGLAS

37 VICTORIA STREET
DOUGLAS
ISLE OF MAN IM1 2LF

T 01624 620606

F 01624 677363

E info@deanwood.co.im

CASTLETOWN

COMPTON HOUSE
9 CASTLE STREET CASTLETOWN
ISLE OF MAN IM9 1LF

T 01624 825995

F 01624 825996

E castletown@deanwood.co.im

RAMSEY

LEZAYRE HOUSE
87 PARLIAMENT STREET
RAMSEY ISLE OF MAN IM8 1AQ

T 01624 816111

F 01624 816588

E ramsey@deanwood.co.im

These particulars are for information purposes only. They do not constitute or form any contract nor should any statement contained herein be relied upon as a representation of fact. Neither the vendor nor DeanWood Agencies Limited ('the firm'), nor any officer or employee of the firm accept liability or responsibility for any statement contained herein. The vendor does not by these particulars, nor does the firm, nor does any officer or any employee of the firm have any authority to make or give any representation or warranty whatsoever as regards the property or otherwise. It is the sole responsibility of any person interested in the property described in these particulars to make all proper enquiries and searches to verify the description of the property and all other particulars herein.

FOR MORE PROPERTIES VISIT OUR WEBSITE @ [deanwood.im](https://www.deanwood.im)