





## Beresford Avenue, Rochester, ME1 2QX

Guide Price £350,000

🛏 3 🚿 1 🛋 2

- 3 Bedroom End Of Terrace Home
- Cloakroom
- Fully Tiled Shower Room
- Near To High Performing Schools
- Tenure Freehold / Council Tax Band
- Stunning Kitchen Dining Room With Bi-folds & Log Burner
- Driveway For Two Vehicles
- Outbuilding Used As A Bar
- Easy Motorway Access
- QUOTE AP0490



Oozing with charm, this 1930's home in Beresford Avenue mixes the modern day demands a family may need with character features that allow you to relax in a homely environment.

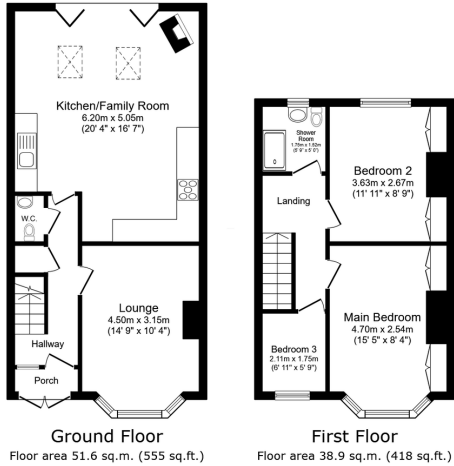
Having been extended you have a fantastic space in the kitchen/dining area to entertain friends and family. The bi folding doors with Velux roof lights allow natural light to flood this room. There's plenty of storage cupboards and worktop space to prepare your favorite meal, with a range of appliances such as a dishwasher, range cooker and butler sink. You may decide to alternatively sit and relax watching the log burner in the winter months. The new layout now accommodates the addition of a very useful downstairs cloakroom.

The lounge has ample space for plenty of furniture with its bay window and built in bespoke storage units.









Total floor area: 90.4 sq.m. (973 sq.ft.)

This floor plan is for illustrative purposes only. It is not drawn to scale. Any measurements, floor areas (including any total floor area), openings and orientations are approximate. No details are guaranteed, they cannot be relied upon for any purpose and do not form any part of any agreement. No liability is taken for any error, omission or misstatement. A party must rely upon its own inspection(s). Powered by www.Propertybox.io

