



Bishopsgate, EC2M

£525,000

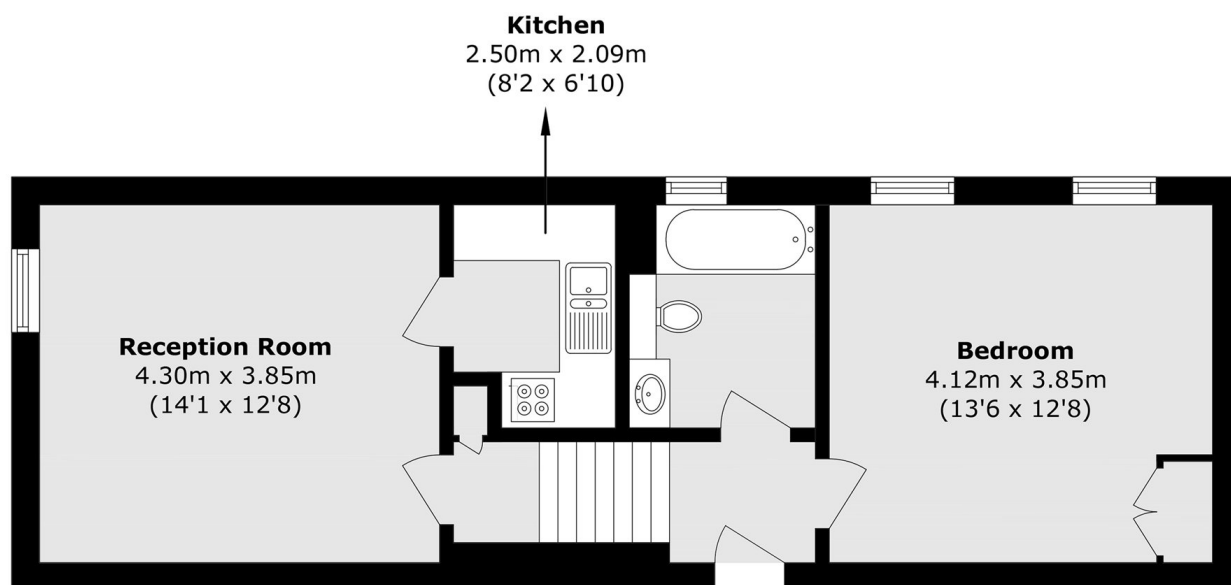
A very spacious one double bedroom apartment located in this central location on Bishopsgate. This property has a large open plan dining area, a newly fitted kitchen and a separate living room with high ceilings throughout.

Bishopsgate is perfectly located with Liverpool Street station directly opposite, along with all of the local shops from Spitalfields Market as well as restaurants and bars that the City has to offer.

Features

- Central Location
- Newly Refurbished
- Furnished
- Wood Flooring Throughout
- Over 500sqft
- Lift Access

Bishopsgate, London, EC2M



Total area (approx.): 48.5 sq. m (522.0 sq. ft)