



190 Hayling Road, South Oxhey
£575,000





190 Hayling Road

South Oxhey, Watford

A FIVE BEDROOM THREE BATHROOM BRICK BUILT END OF TERRACE PROPERTY LOCATED ON A POPULAR ROAD IN S.OXHEY WITHIN WALKING DISTANCE OF CARPENDERS PARK STATION & OFFERED TO THE MARKET WITH NO UPPER CHAIN.

Council Tax band: D

Tenure: Freehold

EPC Energy Efficiency Rating: D

EPC Environmental Impact Rating:

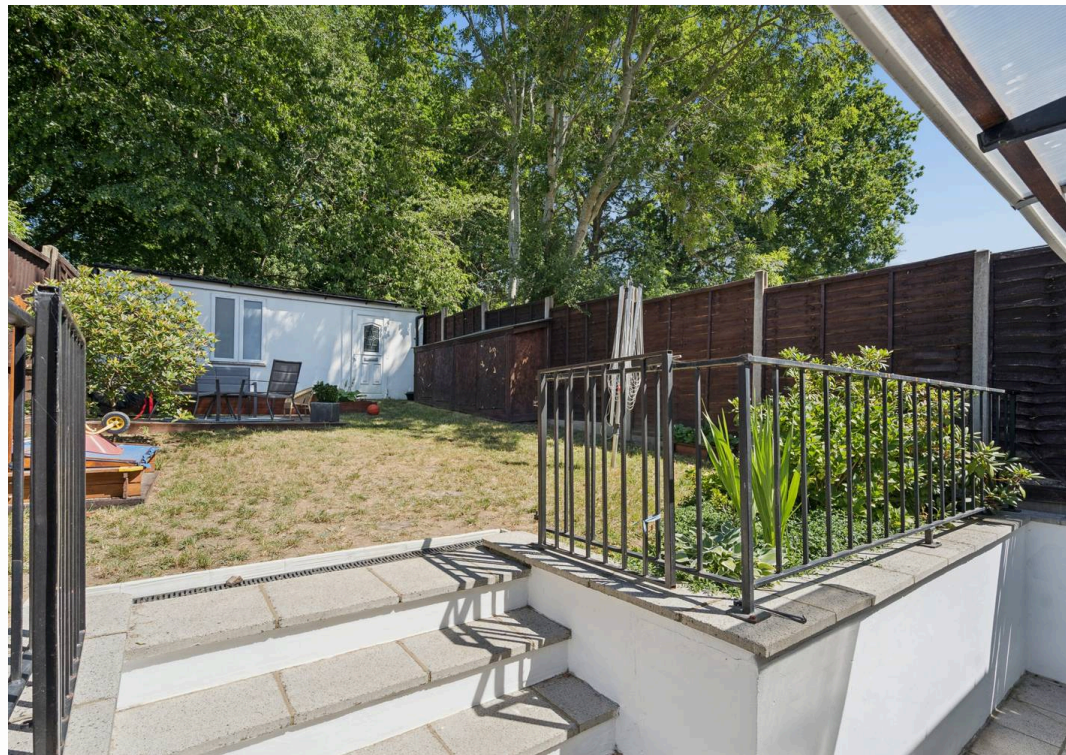
- NO UPPER CHAIN
- END OF TERRACE BRICK BUILT HOUSE
- EXTENDED TO REAR & LOFT CONVERTED - 1,243 SQFT OF INTERNAL LIVING ACCOMMODATION
- FIVE BEDROOMS / THREE BATHROOMS
- MODERN CLEAN & TIDY CONDITION THROUGHOUT
- DOUBLE GLAZED & GAS CENTRAL HEATING
- POPULAR LOCATION
- WALKING DISTANCE OF CARPENDERS PARK STATION
- EPC RATING - D
- COUNCIL TAX BAND - D







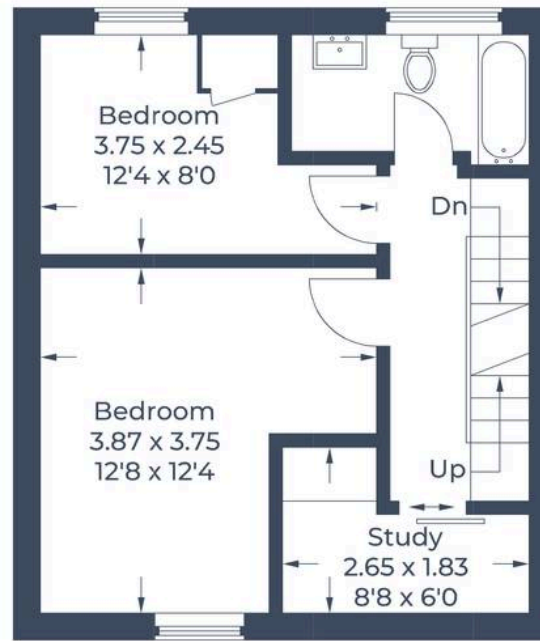




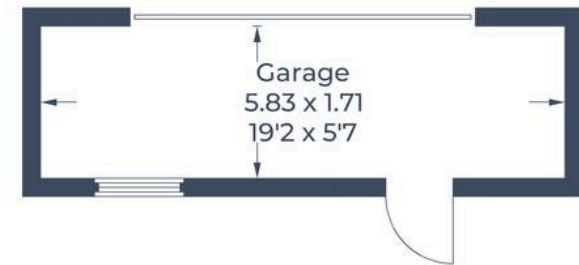
Approximate Gross Internal Area
 Ground Floor = 54.0 sq m / 581 sq ft
 First Floor = 35.1 sq m / 378 sq ft
 Second Floor = 26.4 sq m / 284 sq ft
 Garage = 9.9 sq m / 106 sq ft
 Total = 125.4 sq m / 1,349 sq ft



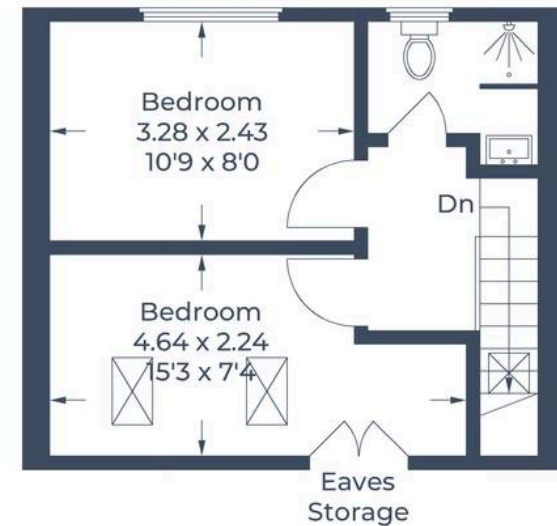
Ground Floor



First Floor



(Not Shown In Actual
 Location / Orientation)



Second Floor

Illustration for identification purposes only,
 measurements are approximate, not to scale.

© CJ Property Marketing Produced for Fairfield Estates





Fairfield – Oxhey

1 Station Approach, Watford – WD19 7DT

020 8428 0540 • rob@fairfieldstates.co.uk • fairfieldstates.co.uk/

We have prepared these particulars as a general guide of the property and they are not intended to constitute part of an offer or contract. We have not carried out a detailed survey of the property and we have not tested any apparatus, fixtures, fittings, or services. All measurements and floorplans are approximate, and photographs are for guidance only. These should not be relied upon for the purchase of carpets or any other fixtures or fittings. Lease details, service