



Hyde Park Square, London, W2

£2,650 Per Week,

NAPIER WATT

T: 0207 935 0011
E: enquiries@napierwatt.co.uk
W: napierwatt.co.uk

35 Berkeley Square, Mayfair, London, W1J 5BF







Description

A spacious three-bedroom apartment in this highly sought-after portered block on Hyde Park Square. With solid wood flooring throughout, high ceilings and plenty light throughout, this lateral apartment is an ideal family home. laid out over 1,750sq ft, the property comprises three large bedrooms, all en-suite and the master has a walk-in wardrobe, guest cloakroom, separate kitchen with space for dining, and bright and airy living room with views onto the square. The building is a short to Hyde Park and Paddington Station, not to mention Marble Arch and all the amenities of Oxford Street.

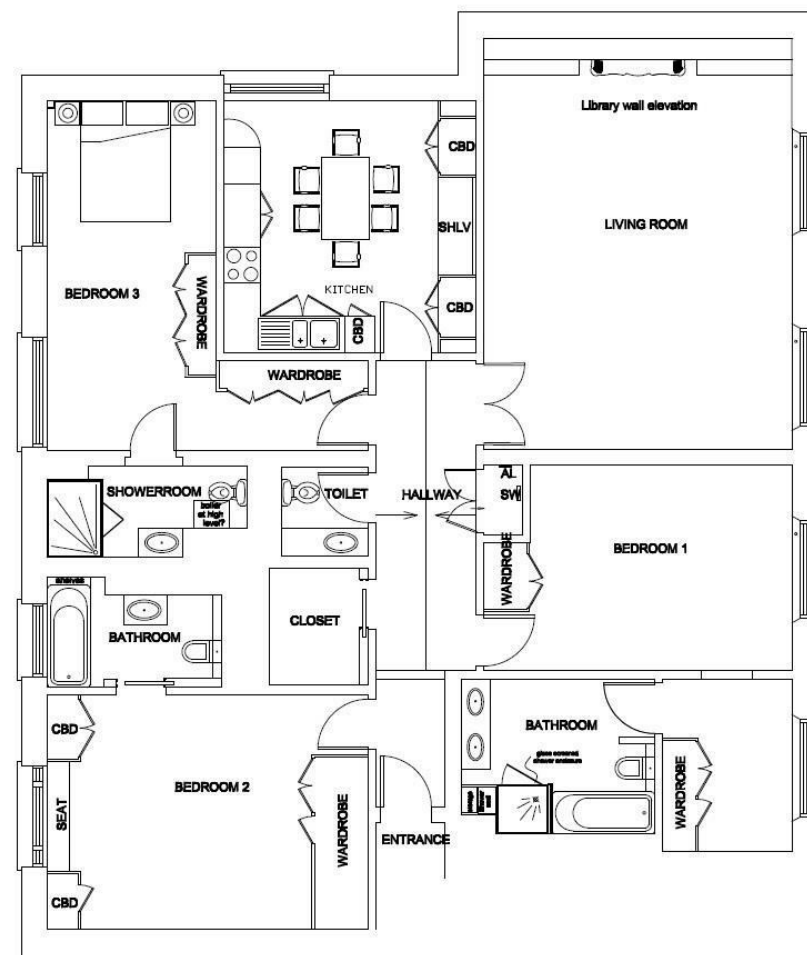
3 Bedrooms : 3 En-Suite Bathrooms : Guest W.C. : Porter : Westminster Council Tax H : EPC Rating C

Key Features

- PORTER
- HIGH CEILING
- SPACIOUS
- LATERAL
- VIEWS OF HYDE PARK SQUARE

Terms

Fees & Charges: Tenancies exceeding £100,000 Per annum £480 inc VAT, Tenancies where a company is a tenant £480 Inc VAT.



Ground Floor

IMPORTANT: We would inform prospective purchasers that these sales particulars have been prepared as a general guide only. A detailed survey has not been carried out, nor the services, appliances and fittings tested. Room sizes should not be relied upon for furnishing purposes and are approximate. If floor plans are included, they are for guidance only and illustration purposes only and may not be to scale. If there are any important matters likely to affect your decision to buy, please contact us before viewing the property.