

Dunwood House  
Over Wallop







Please note, the furniture in this image has been virtually staged



Please note, the furniture in this image has been virtually staged



Please note, the furniture in this image has been virtually staged





## Outside

The double garage is integral to the house, with a large walk-up storeroom above. Dunwood House has a landscaped southwest facing garden extending to about 0.25 acre, with wonderful views over the surrounding Hampshire countryside. There is ample parking to the front of the house, complementing the double garage. In addition, there is a deep terrace running along the rear of the house from which to enjoy the views.

## Location

Over Wallop is situated in the Test Valley one of three Wallop villages surrounded by beautiful countryside with a thriving community. Over Wallop offers a good local pub, The White Hart, a village shop with post office, community and church hall and a primary school.

The neighbouring village of Stockbridge is picturesque and popular with a variety of local shops, galleries and interesting boutiques. In addition, it has an excellent range of restaurants and public houses, and also first-class local amenities including a church, doctors' surgery, renowned butchers Robinsons, and both primary and secondary schools.

Grateley Station is conveniently located approximately 2.9 miles away, providing an excellent service to London Waterloo (1 hour 16 mins). The A303, which is approximately six miles away, gives access to the South West, London and the north.

This part of Hampshire is well known for its many highly regarded schools, which include Farleigh Preparatory School, Godolphin, Winchester College, St Swithun's, and the Salisbury Grammar Schools.

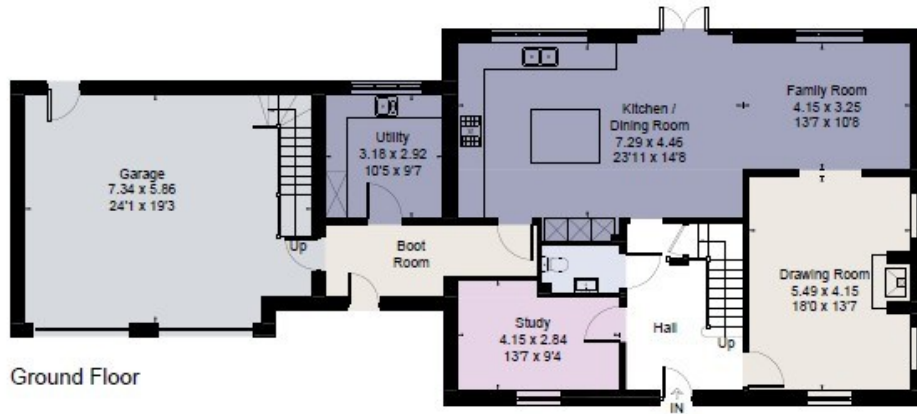




Approximate Floor Area = 341.2 sq m / 3673 sq ft

Garage = 42.3 sq m / 455 sq ft

Total = 383.5 sq m / 4128 sq ft



Drawn for illustration and identification purposes only by @fourwalls-group.com #86729

**Disclaimer Notice**

Myddelton & Major LLP and their clients give notice that:- i) they have no authority to make or give any representations or warranties in relation to the property, ii) these particulars do not form part of any offer or contract and must not be relied upon as statements or representations of fact, iii) any areas, measurements or distances are approximate. The text, photographs and plans are for guidance only and are not necessarily comprehensive. It should not be assumed that the property has all the necessary planning, Building Regulation or other consents, and, any services, equipment or facilities have not been tested by the agent. iv) the purchaser must satisfy themselves by inspection or otherwise.



Myddelton  
& Major™

Call. 01264 810 400

Email. [stockbridgeresidential@myddeltonmajor.co.uk](mailto:stockbridgeresidential@myddeltonmajor.co.uk)

Click. [myddeltonmajor.co.uk](http://myddeltonmajor.co.uk)

Visit. The Old Police House, High Street, Stockbridge, Hampshire, SO20 6HE

