



**Price**

**£650,000**

**Freehold**

4x  2x  3x 

**Grattons Drive, Pound  
Hill, Crawley, West  
Sussex, `**

**OVER 60?**

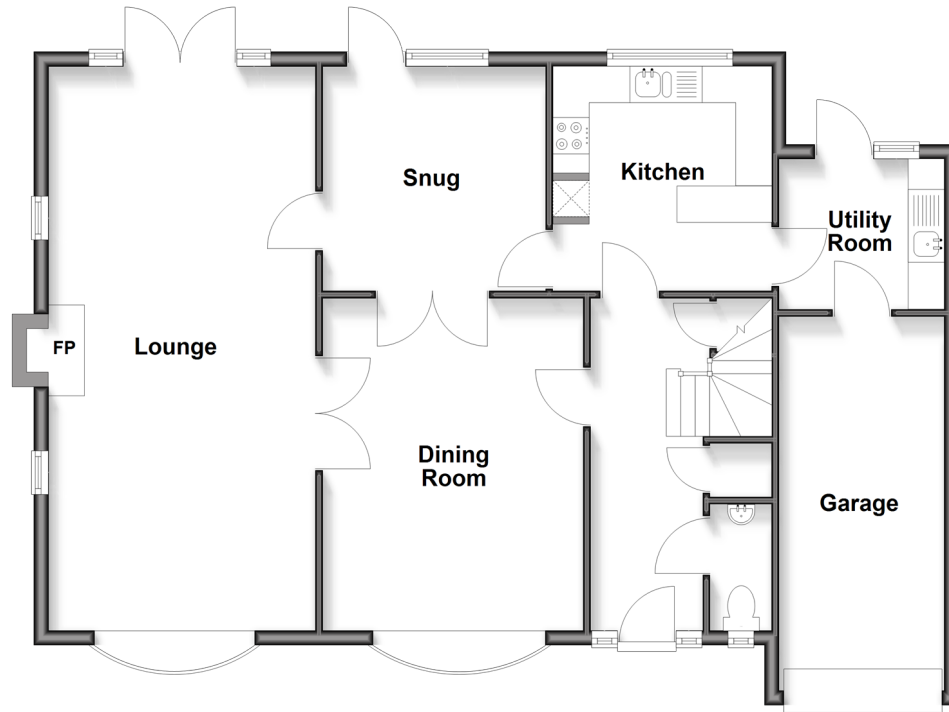
Secure this property  
for up to **59% less!**

**cubitt&west**  
Helping you move forwards



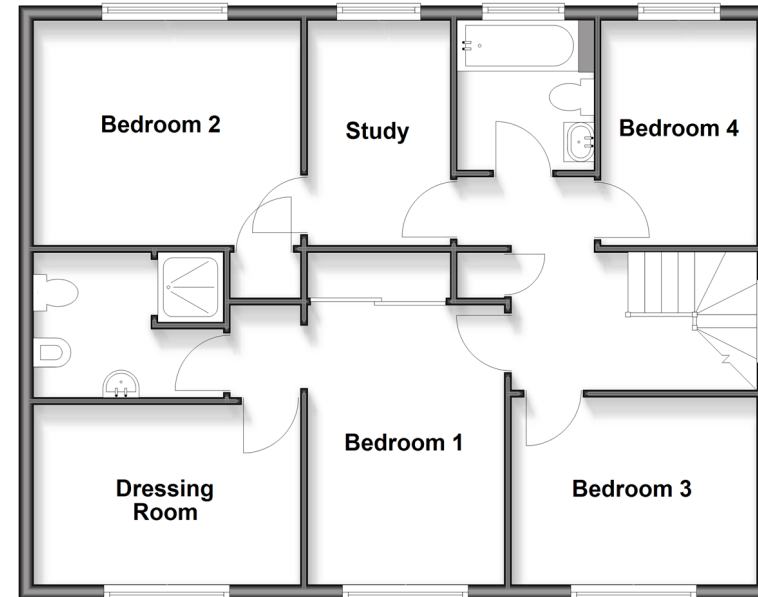
### Ground Floor

Approx. 95.6 sq. metres (1029.5 sq. feet)



### First Floor

Approx. 77.7 sq. metres (836.7 sq. feet)



## Accommodation

### GROUND FLOOR

Entrance Hall

Dining Room : 14'5 x 11'8 (4.40m x 3.56m)

Snug : 10'2 x 9'9 (3.10m x 2.97m)

Lounge: 25'4 x 12'1 (7.73m x 3.69m)

Kitchen: 10'4 x 9'8 (3.15m x 2.95m)

Utility Room: 7'7 x 6'8 (2.31m x 2.03m)

### FIRST FLOOR

Landing

Bedroom 1: 12'7 x 9'2 (3.84m x 2.80m)

En Suite

Dressing Room: 12'1 x 8'4 (3.69m x 2.54m)

Bedroom 2: 12'11 x 10'4 (3.94m x 3.15m)

Bedroom 3: 10'5 x 7'1 (3.18m x 2.16m)

Bedroom 4: 11'1 x 8'4 (3.38m x 2.54m)

Study: 10'8 x 6'7 (3.25m x 2.01m)

Bathroom

### OUTSIDE

Front Garden

Rear Garden

Driveway

Garage



## Main features

- Good size detached house in Pound Hill
- Garage and large driveway for multiple cars
- Sunny rear garden
- Extended by previous owner giving upstairs and downstairs accommodation
- Popular location near Three Bridges station, schools and shops



### Nearest Schools

Primary Schools: Milton Mount Primary 0.3 miles, Pound Hill Junior School, Crawley 0.8 miles, Three Bridges Junior School 1.2 miles

Secondary Schools: Hazelwick School 0.6 miles,



### Transport Information

Train Stations: Three Bridges 0.9 miles, Gatwick Airport 1.7 miles, Crawley 1.8 miles



### Address

Grattons Drive, Pound Hill, Crawley, West Sussex, `



### Directions

For directions to this property please contact us.





**cubitt&west**  
Helping you move forwards

Call Crawley Branch 01293 522233 ■ [cubittandwest.co.uk](https://cubittandwest.co.uk)



- Legal advice should be taken to verify fixtures/fittings, planning, alterations and/or lease details
- Appliances & services are untested, dimensions are approximate and floor plans are not to scale
- Through a Homewise Home For Life Plan people aged 60+ can secure this property for up to 50% less, by purchasing a Lifetime Lease



20420528/20251213/SS/NH1