

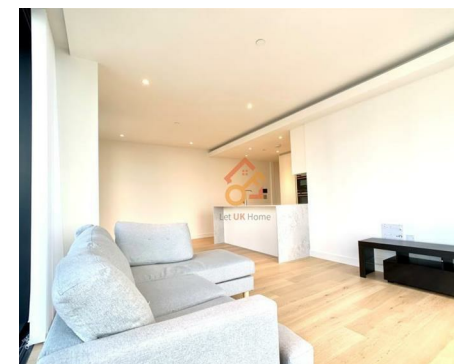
Let **UK** Home

2 Bedrooms

Flat

Located in London

£1,050,000



info@letukhome.co.uk

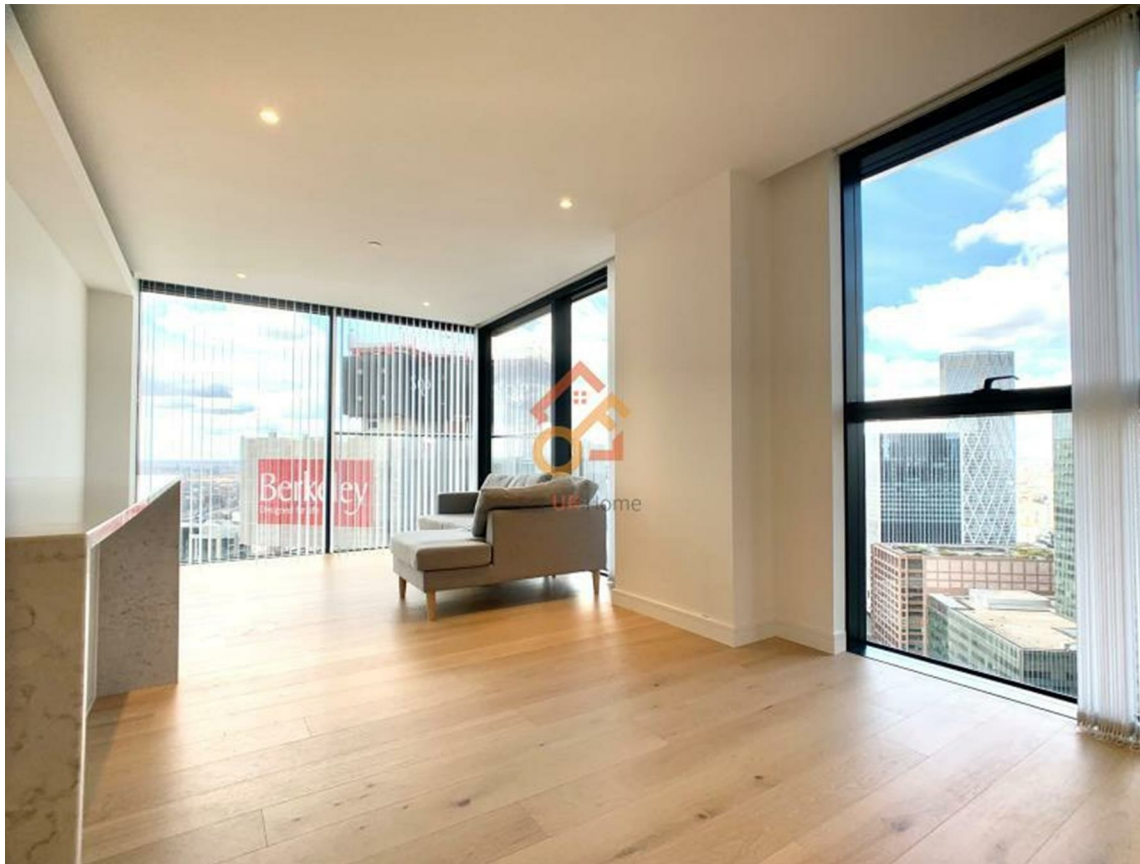
<https://www.letukhome.co.uk/>

01795 358 886



75 Marsh Wall London

E14 9GX



Let UK Home are excited to offer this spectacular two bedroom apartment in the heart of Hampton Tower part of the South Quay Plaza.

This property comprises a large bright kitchen with a stylishly attached dining area, a spacious living room, two double bedrooms(master with dressing room & ensuite), a large family sized bathroom and ample storage.

The apartment will offer a concierge service, a leisure and wellness center and a fitness center (with an outdoor hot tub), iGarden-an advanced shared workspace, supporting conference rooms and outdoor work areas, a game room with a separate soundproof karaoke room, a 20-meter swimming pool, a 56th-floor bar and lounge, and a terrace. It is worth mentioning that residents of the 56th-floor bar can overlook Canary Wharf, the Thames, the City of London, etc., and enjoy a beautiful panoramic view.

Canary Wharf is a well-developed area in London with many travel routes to choose from. The apartment is within walking distance of South Quay Light Rail Station (DLR) and Canary Wharf Underground Station (Canary Wharf Station). The DLR, Jubilee Line, and Elizabeth Line are three transportation hubs that run through the entire London, and can quickly reach the center of London and surrounding areas. The Thames Clippers pier is also nearby.

The extremely popular Canary Wharf has five large shopping malls. There are more than 200 shops around SQP: cafes, bars, restaurants, service agencies and entertainment facilities.

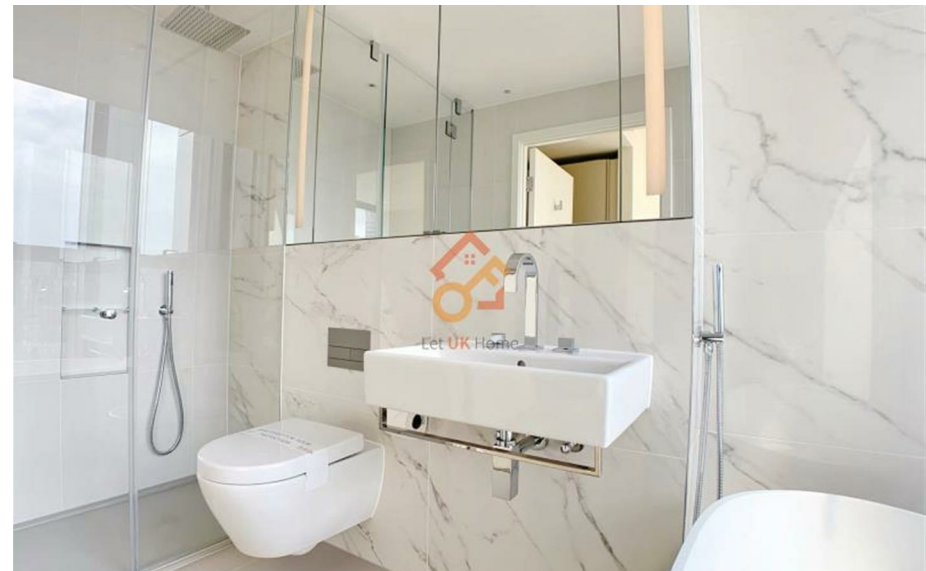
75 Marsh Wall London

£1,050,000 Leasehold



- 38th Floor
- 24h Security
- Co-working space
- Cinema & Game Room
- The Spa

- Concierge Service
- Swimming Pool
- Residents Lounge
- The Gym





Let **UK** Home

3F 2 Eastbourne Terrace
Paddington
London
W2 6LG

01795 358 886

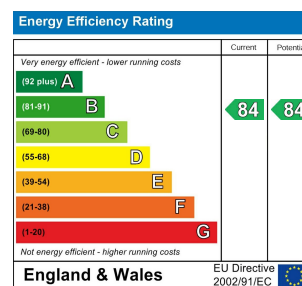
info@letukhome.co.uk



Council Tax Band:

Local Authority:

Agents Note: Whilst every care has been taken to prepare these particulars, they are for guidance purposes only. All measurements are approximate and are for general guidance purposes only and whilst every care has been taken to ensure their accuracy, they should not be relied upon and potential buyers/tenants are advised to recheck the measurements.



<https://www.letukhome.co.uk/>