

**Ashford, School Road, Snitterfield CV37 0JL**

£650,000

3 1 2

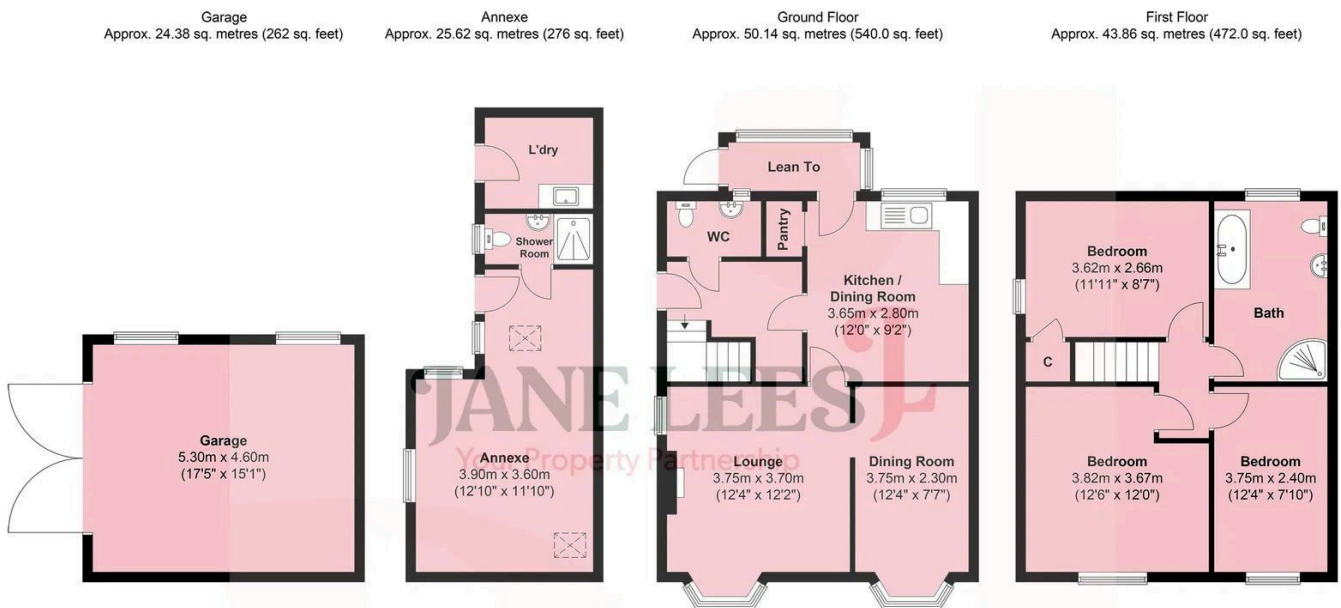


Ashford is a gorgeous period village cottage nestled in the heart of Snitterfield. This charming home boasts three bedrooms, a welcoming living room, a stylish dining area, a modern kitchen, and a separate annex with huge potential for extension, perfect for creating a fabulous farmhouse-style kitchen and family room onto the courtyard. Set amidst magical gardens, the property also features a gated entrance complete with a driveway and garage.



## Key Features

- Premium Warwickshire Village
- 3 Double Bedrooms
- Large driveway and Double Garage
- Dating to late 1800's
- Potential to extend with permitted development
- Separate Annex for Home Office or Studio
- Sunny Cottage Garden
- Gated Entrance
- Triple Glazed Bespoke Windows
- Excellent Schools and Transport Links



Total floor area: approx. 94.0 sq. metres (1012.0 sq. feet)  
 Total floor area including Annexe & garage: approx. 144.0 sq. metres (1550.0 sq. feet)

