

Flat 6 27 Victoria Road, Sheffield, South Yorkshire, S10 2DJ

Rent: £1220.00 per calendar month – excluding utilities & council tax

Rent Schedule: Monthly in advance

Security Deposit: Total £1220.00

Bills Package: Unihomes package available for electricity, water, internet & TV licence (optional)

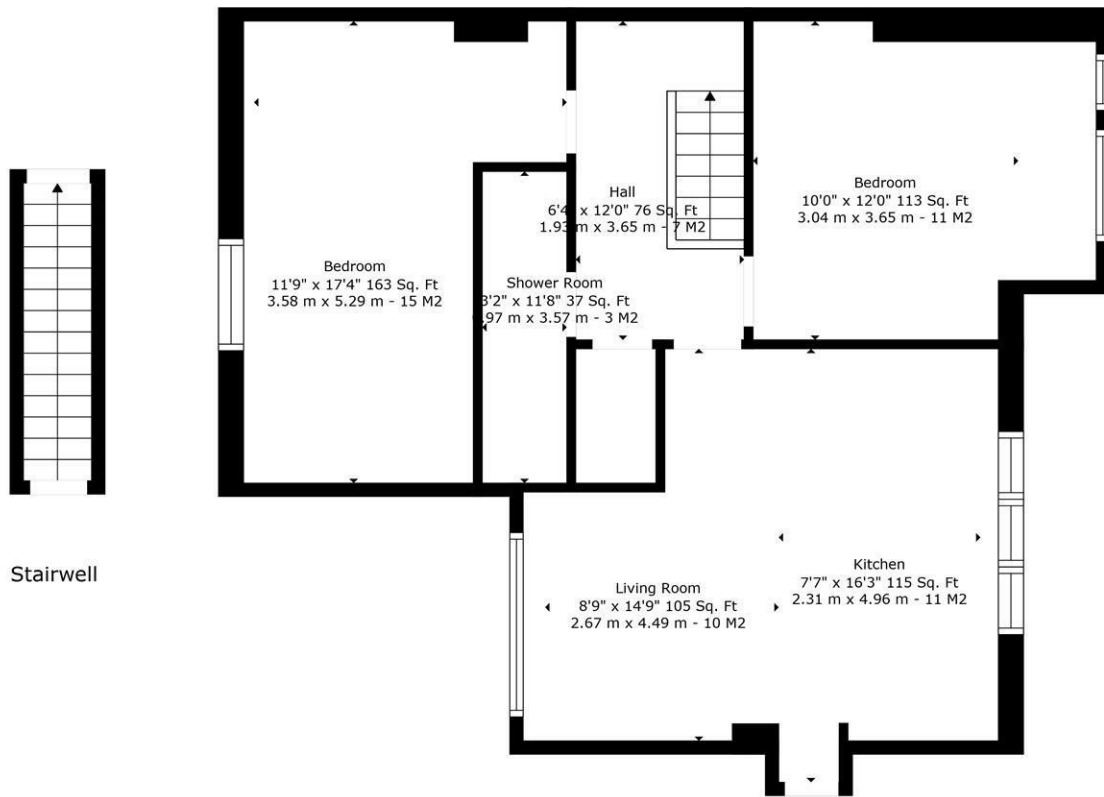
Council Tax: Band A - not applicable for full-time students

EPC Rating: E

Tenancy Start Date: 2nd September 2026

£1,220 Per Month
Available: 2nd September 2026

- Second Floor Flat
- Two Double Bedrooms
- Modern Shower Room
- Open Plan Kitchen Living Room
- Fully Furnished
- Close to Ecclesall Road
- Tenancy Start Date: 2nd September 2026
- Deposit - 1 Months Rent
- Rent - £1220pcm
- Unihomes Bills Package Available Upon Request



27 Victoria Road Flat 6



TOTAL: 679 sq. ft, 63 m2
 BELOW GROUND: 29 sq. ft, 3 m2, 27 VICTORIA ROAD FLAT 6: 650 sq. ft, 60 m2
 EXCLUDED AREAS: LOW CEILING: 49 sq. ft, 4 m2

Sizes And Dimintions Are Approximate. Actual May Vary

Energy Efficiency Rating		Current	Potential
Very energy efficient - lower running costs			
(92 plus) A			
(81-91) B			
(69-80) C			
(55-68) D			
(39-54) E		45	45
(21-38) F			
(1-20) G			
Not energy efficient - higher running costs			
England & Wales	EU Directive 2002/91/EC		

Environmental Impact (CO ₂) Rating		Current	Potential
Very environmentally friendly - lower CO2 emissions			
(92 plus) A			
(81-91) B			
(69-80) C			
(55-68) D			
(39-54) E			
(21-38) F			
(1-20) G			
Not environmentally friendly - higher CO2 emissions			
England & Wales	EU Directive 2002/91/EC		