



## Waldegrave Road, TW11

£509,950

This two bedroom split level period conversion property is located in the heart of Teddington. The property has an impressive private garden, presented in great condition and is offered with no onward chain.

Waldegrave Road is close to Teddington town centre, excellent for transport by train or bus. Royal Bushy Park and The River Thames are easy to reach along with Teddington High Street.

### Features

- Victorian Conversion
- No Onward Chain
- Impressive Private Garden
- Split Level
- Two Bedrooms
- Central Location

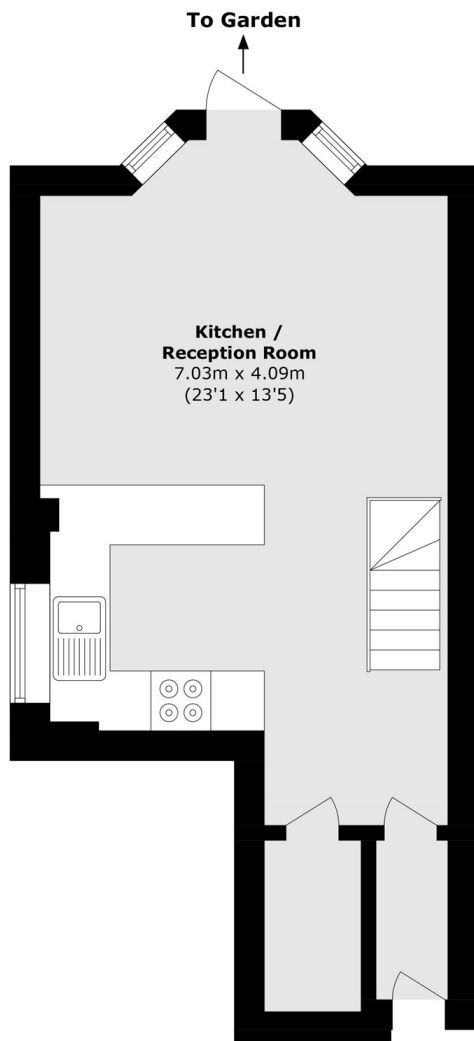


## Waldegrave Road, TW11

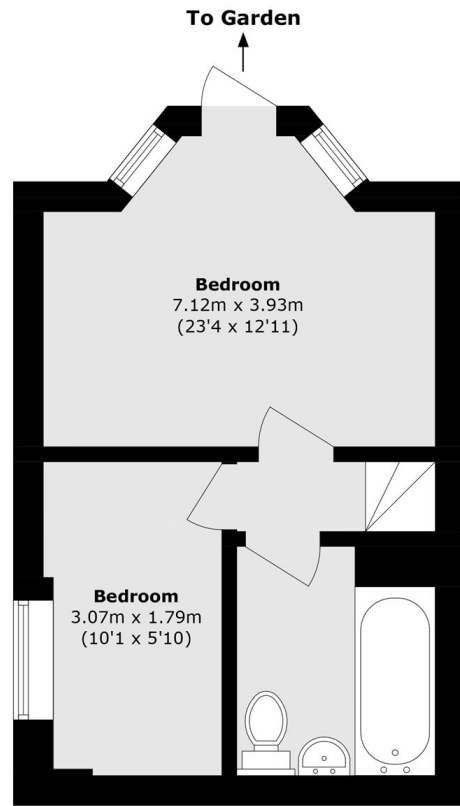
The apartment is offered with no onward chain and ready to move straight in. The property consists of a light and spacious reception room with french doors leading onto a large private garden. There is a modern kitchen and on the lower ground floor there is a family bathroom and two bedrooms. This makes for the perfect first time buy or investment property and has the potential to purchase a share of the freehold.



# Waldegrave Road, Teddington, TW11



**Ground Floor**



**Lower Ground Floor**

Total area (approx.): 51.4 sq. m (553.3 sq. ft)