

61B Allnutts Road

Epping, Epping

Council Tax band: B

Tenure: Leasehold

- GROUND FLOOR MAISONETTE
- PRIVATE REAR GARDEN
- TWO ALLOCATED PARKING SPACES
- IDEAL FIRST TIME BUY
- CLOSE TO EPPING STATION
- LOCAL CONVENIENCE SHOP NEAR BY
- GREAT LOCAL WALKS



Entrance Hall

Lounge/ Diner

16' 8" x 9' 4" (5.09m x 2.85m)

Kitchen

7' 6" x 5' 11" (2.28m x 1.81m)

Bedroom One

8' 4" x 12' 0" (2.54m x 3.67m)

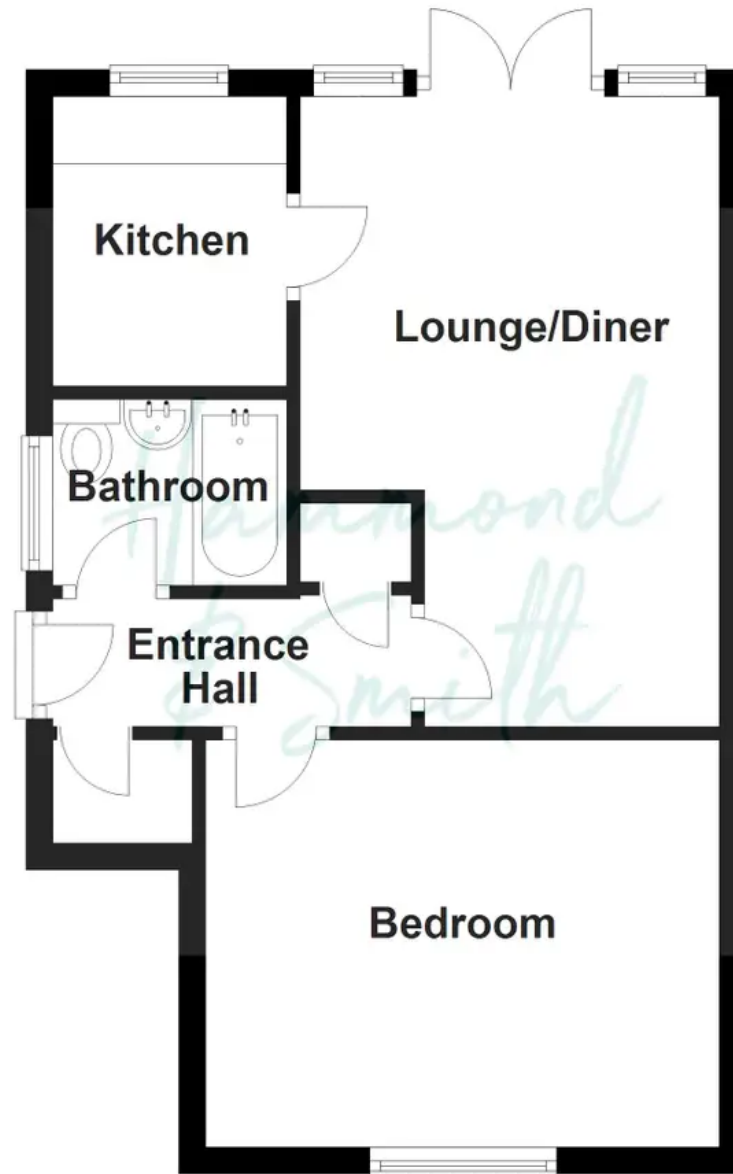
Bathroom

5' 11" x 5' 6" (1.8m x 1.67m)





Ground Floor



Floorplans are provided for guidance only. They are not to scale & must not form any part of a legal contract or be reproduced
Plan produced using PlanUp.