

Belsize Road, Swiss Cottage



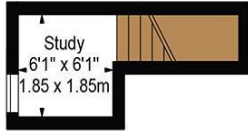
- Available from the 1st of May. Exceptional standard of living 2,372 sqft Victorian townhouse located on Belsize Road
- Stunning reception room. Superb kitchen dining and tv area with unity area and sliding doors to rear patio garden
- Bespoke shutters, water softener, and filtered water tap
- Between Abbey Road and Fairhazel Gardens. Close to West End Lane and South Hampstead & Swiss Cottage stations
- 4 generous bedrooms 3 luxury high quality bathrooms (1 ensuite with dressing area) study area



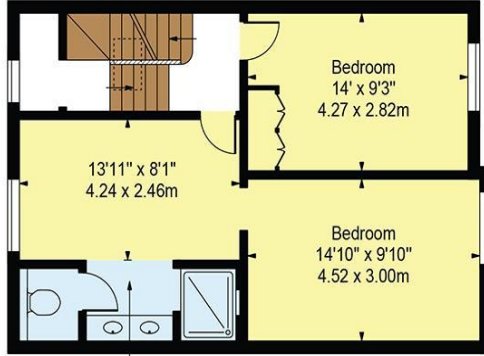
Weekly Rental £1,846 Monthly £8,000

Belsize Road

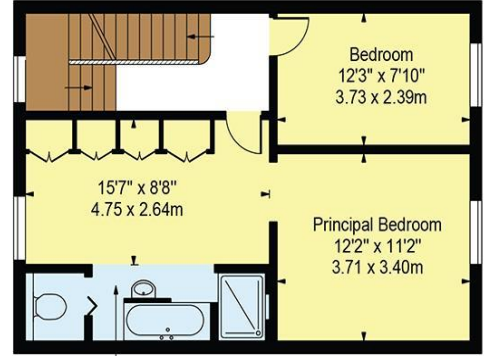
Approx. Gross Internal Area 2372 Sq Ft - 220.37 Sq M



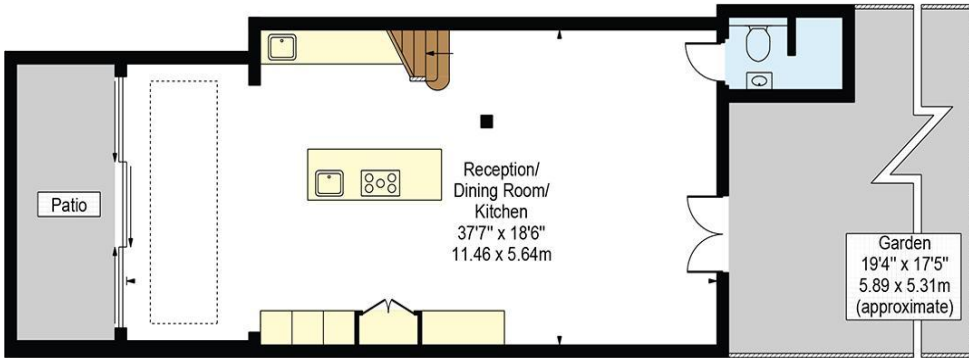
Mezzanine
(58 Sq Ft - 5.39 Sq M)



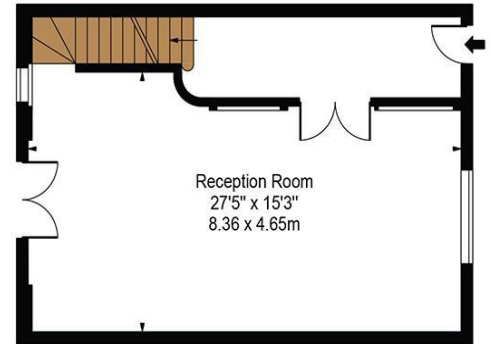
Second Floor
(556 Sq Ft - 51.65 Sq M)



First Floor
(544 Sq Ft - 50.54 Sq M)



Lower Ground Floor
(708 Sq Ft - 65.78 Sq M)



Ground Floor
(506 Sq Ft - 47.01 Sq M)

For Illustration Purposes Only - Not To Scale

This floor plan should be used as a general outline for guidance only and does not constitute in whole or in part an offer or contract. Any intending purchaser or lessee should satisfy themselves by inspection, searches, enquiries and full survey as to the correctness of each statement. Any areas, measurements or distances quoted are approximate and should not be used to value a property or be the basis of any sale or let.

Copyright Morriarti Photography & Design LTD

Energy performance certificate (EPC)

134 Belsize Road LONDON NW6 4BG	Energy rating B	Valid until: 25 October 2035
		Certificate number: 2104-2145-0869-8121-0592

Property type Mid-terrace house

Total floor area 204 square metres

Rules on letting this property

Properties can be let if they have an energy rating from A to E.

You can read [guidance for landlords on the regulations and exemptions \(https://www.gov.uk/guidance/domestic-private-rented-property-minimum-energy-efficiency-standard-landlord-guidance\)](https://www.gov.uk/guidance/domestic-private-rented-property-minimum-energy-efficiency-standard-landlord-guidance).

Energy rating and score

This property's energy rating is B. It has the potential to be B.

[See how to improve this property's energy efficiency.](#)