



Leinster Square, W2

£2,307 Per week

Dexters



Leinster Square, W2

This impeccably refurbished three-bedroom garden flat overlooks a private residents' garden square. Behind the grand stucco frontage with tall, west-facing arched windows, this meticulously restored building is in brand new condition. Split over two floors, it features three bedrooms, three bathrooms, two reception rooms, and private west-facing gardens, offering luxurious living with elegant charm.

The building was recently completed to a high specification to include comfort cooling, open plan designer kitchens with integrated appliances, oak parquet flooring to living areas and carpets to bedrooms.

Westbourne Grove is a prestigious area in Notting Hill, known for its luxury boutiques, fine dining, and elegant cafes. It offers excellent transport links, with nearby tube stations providing easy access to central London. Close to Kensington Gardens, it combines sophisticated urban living with natural beauty.

Features

- Meticulous Restoration
- Brand New
- Three Bedroom Apartment
- Two Bathrooms
- Private Garden
- Additional Dining Room

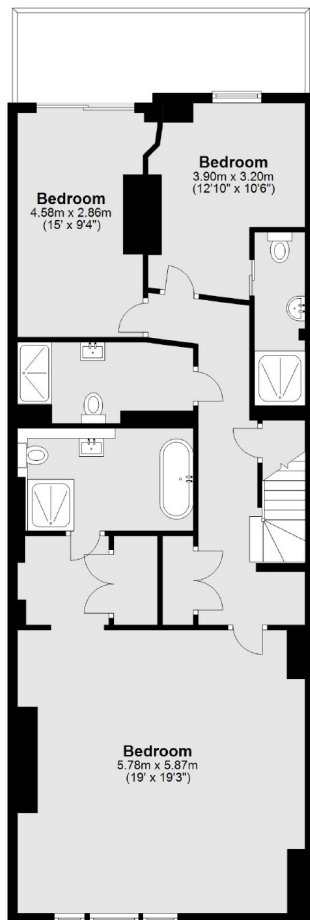




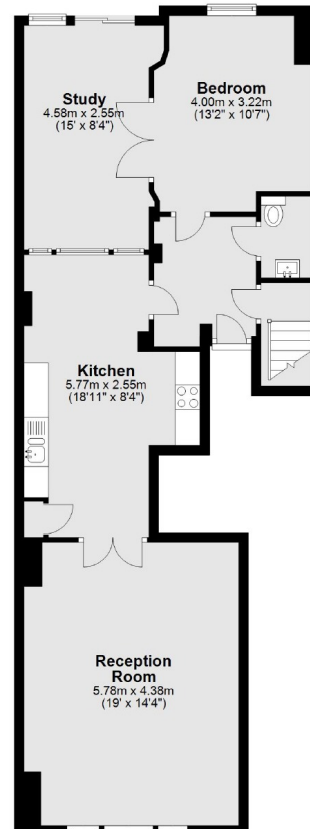


Leinster Square, London, W2

Basement



Ground Floor



Total area: approx. 173.6 sq. metres (1868.2 sq. feet)

Dexters

Notting Hill
121-123 Notting Hill Gate
London
W11 3LB
Lettings
020 7792 0792

Energy Rating: . We aim to make our particulars both accurate and reliable. However they are not guaranteed; nor do they form part of an offer or contract. If you require clarification on any points then please contact us, especially if you're traveling some distance to view. Please note that appliances and heating systems have not been tested and therefore no warranties can be given as to their good working order.

 **RICS** | Regulated
Estate Agent
and Letting Agent

[dexters.co.uk](https://www.dexters.co.uk)