

Towers Wills

Town & Country

📞 01935 577 032 | 01460 298 530 | ✉ info@towerswills.co.uk



55, Falcon Road, Yeovil, Somerset BA22 8BR

Offers Over £254,500

Towers Wills are delighted to bring to market this well-presented three-bedroom family home, situated within the highly sought-after Agusta Park development and conveniently positioned for excellent commuter links and easy access to Yeovil Town Centre.

Accommodation:

The property has been well maintained by the current owners and offers spacious, modern accommodation throughout. To the first floor are three bedrooms, with the principal bedroom benefiting from its own ensuite shower room, while the remaining bedrooms are served by a contemporary family bathroom.

To the ground floor, the property is entered via an inviting entrance hall which leads through to the comfortable lounge, providing an ideal space for relaxation. From the lounge there is access to the kitchen, which is well-appointed and features double doors opening onto the rear garden. Further benefits include a convenient downstairs cloakroom.

Outside:

The garden has been thoughtfully landscaped for ease of maintenance and provides an excellent space for both entertaining and outdoor enjoyment. To the rear of the property there are two allocated parking spaces, adding to the practicality of this attractive home.

An early viewing is highly recommended to fully appreciate the accommodation and location on offer within this popular residential development.

Key Features

- Popular Agusta Park Development
- Terraced Property
- Three Bedrooms
- Master En-suite
- Delightful Rear Garden
- Two Allocated Parking Spaces

Contact Us

Towers Wills Estate Agents - Yeovil

114, Hendford Hill
Yeovil

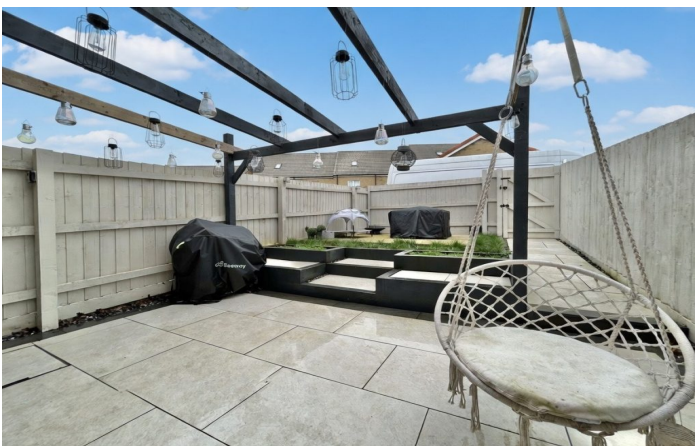
Somerset
BA202RF

T: 01935 577032

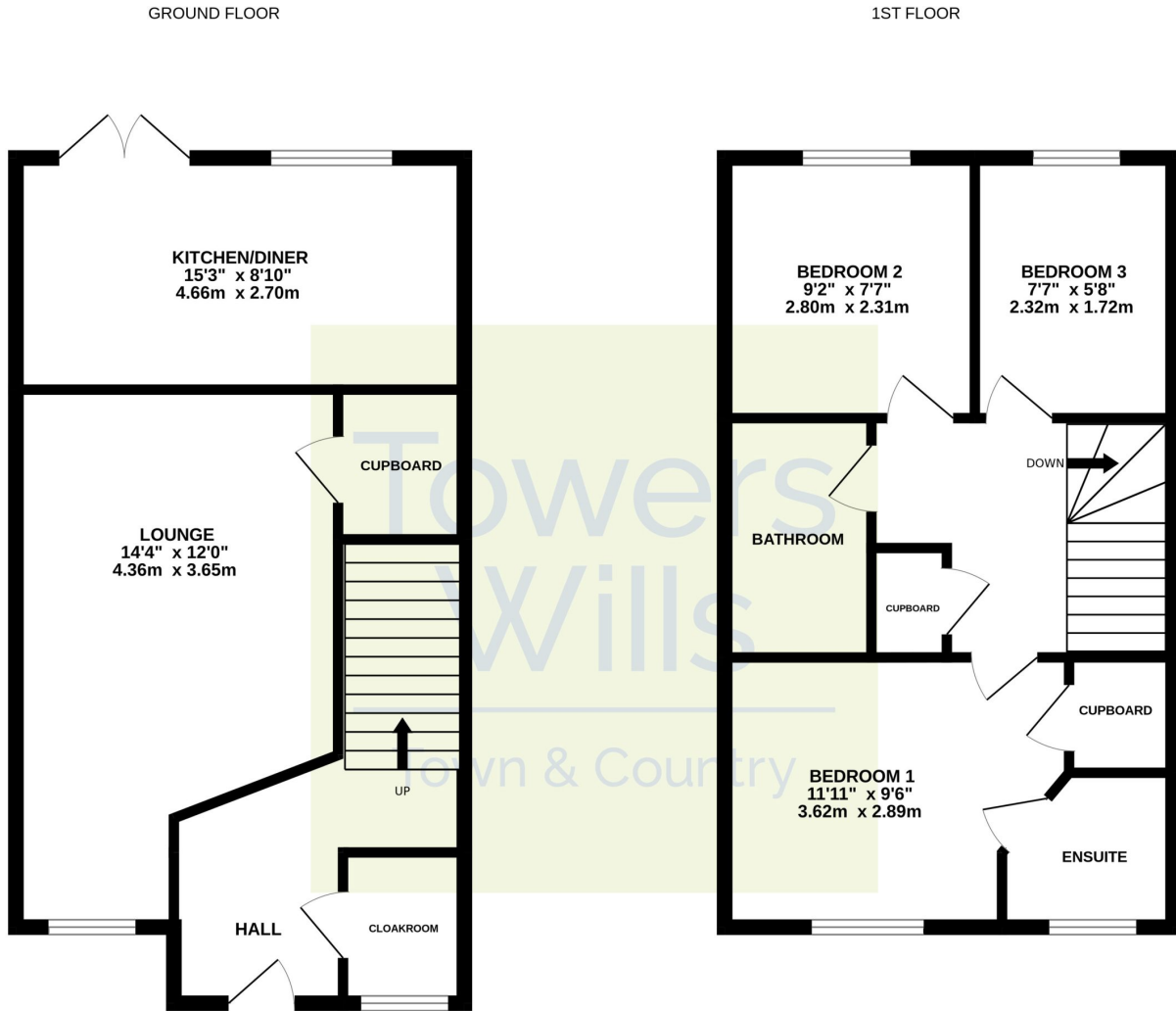
E: info@towerswills.co.uk

Energy Efficiency

Score	Energy rating	Current	Potential
92+	A		96 A
81-91	B	83 B	
69-80	C		
55-68	D		
39-54	E		
21-38	F		
1-20	G		



Floor Plan



Whilst every attempt has been made to ensure the accuracy of the floorplan contained here, measurements of doors, windows, rooms and any other items are approximate and no responsibility is taken for any error, omission or mis-statement. This plan is for illustrative purposes only and should be used as such by any prospective purchaser. The services, systems and appliances shown have not been tested and no guarantee as to their operability or efficiency can be given.
Made with Metropix ©2026

Please Note No tests have been undertaken of any of the services and any intending purchasers should satisfy themselves in this regard. Towers Wills Ltd for themselves and for the vendor of this property whose agents they are, give notice that, (i) these particulars do not constitute any part of an offer or contract, (ii) all statements contained within these particulars are made without responsibility on the part of Towers Wills or the vendor, (iii) whilst made in good faith, none of the statements contained within these particulars are to be relied upon as a statement of representation or fact, (iv) any intending purchaser must satisfy him/herself by inspection or otherwise as to the correctness of each of the statements contained within these particulars, (v) the vendor does not make or give either Towers Wills or any person in their employment any authority to make or give representation or warranty whatsoever in relation to this property.

Photographs / Floor Plans Photographs are reproduced for general information and it must not be inferred that any item is included for sale with this property. Please note floor plans are not to scale and are for identification purposes only. The photographs used in these particulars may have been taken with the use of a wide angle lens. If you have any queries as to the size of the accommodation or plot, please address these with the agent prior to making an appointment to view

Towers Wills

The White House, 114 Hendford Hill, Yeovil BA20 2RF

Yeovil 01935 577032 / South Petherton 01460 298530

info@towerswills.co.uk | www.towerswills.co.uk