



76454 Sherborne Place, Pemberton House, Birmingham, B16 8FN
£1,350 Per month





76454 Sherborne Place, Pemberton House, Birmingham, B16 8FN

£1,350 Per month

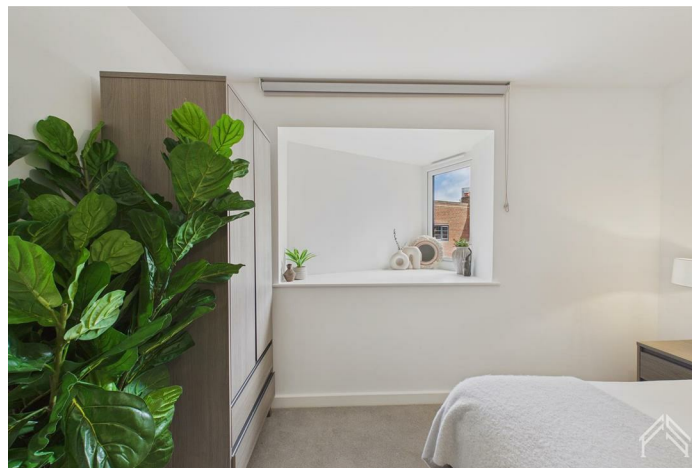
Sophisticated living in the heart of Birmingham. Sherborne Place delivers beautifully finished apartments with sleek modern interiors, thoughtfully designed layouts, and living spaces built for both relaxing and entertaining. Every detail has been considered - from the high-specification kitchens to the clean, contemporary finishes throughout.

Sitting directly alongside the iconic Brindley Place, you're perfectly positioned to enjoy one of Birmingham's most vibrant neighbourhoods. World-class restaurants, independent boutiques, cultural venues, and waterside bars are all moments from your front door - with the energy of the city centre just beyond.

Description



Situation



Furnished

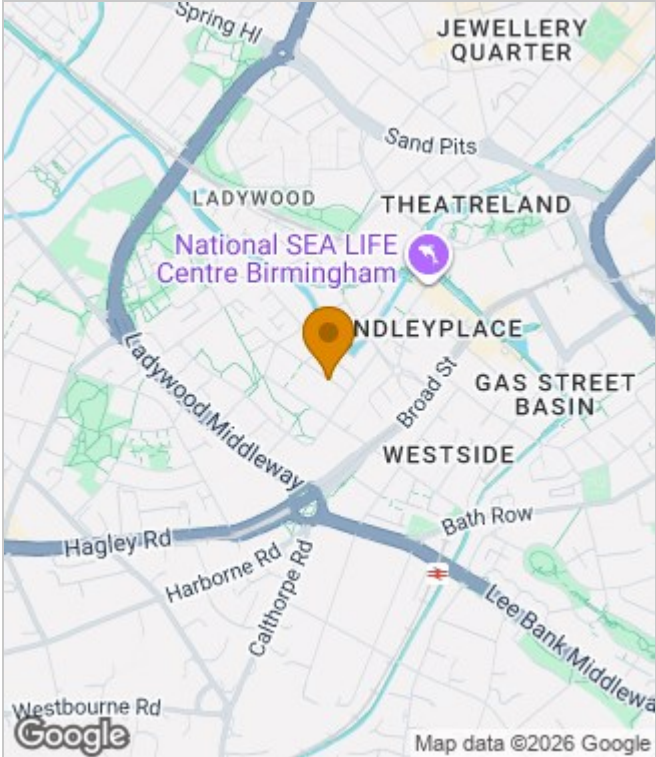
Council Tax Band:

Available:

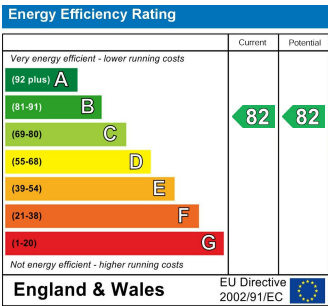
Floor Plans



Area Map



Energy Performance Graph



These particulars, whilst believed to be accurate are set out as a general outline only for guidance and do not constitute any part of an offer or contract. Intending purchasers should not rely on them as statements of representation of fact, but must satisfy themselves by inspection or otherwise as to their accuracy. No person in this firms employment has the authority to make or give any representation or warranty in respect of the property.