

IMPORTANT NOTICE Wilkie May & Tuckwood for themselves and for the vendors of the property, whose agents they are, give notice that the particulars are intended to give a fair and substantially correct overall description for the guidance of intending purchasers and do not constitute part of an offer or contract. Prospective purchasers and lessees ought to seek their own professional advice. 2. All descriptions, dimensions, areas, references to condition and necessary permissions for use and occupation and other details are given in good faith, and are believed to be correct, but any intending purchasers should not rely on them as statements or representations of fact but must satisfy themselves by inspection or otherwise as to the correctness of each of them. 3. No person in the employment of Wilkie May & Tuckwood has any authority to make or give any representations or warranty whatever in relation to this property on behalf of Wilkie May & Tuckwood, nor enter into any contract on behalf of the vendor. 4. No responsibility can be accepted for any expenses incurred by measurements are approximate and have been taken by Nichicom. While we endeavour to make our sales particular accurate and reliable, if there is any point which is of particular importance to you, please contact the office and we will be pleased to check the information with you. We routinely refer potential sellers and purchasers to a selection of recommended local conveyancing firms. It is their decision whether to use those services. In making that decision, it should be known that we receive a payment benefit of not more than £150+VAT. Once an offer is accepted by our client, an Administration Fee of £20+VAT (£24) per buyer will be required in order to process the necessary checks relating to our compliance under Anti-Money Laundering legislation. This is a non-refundable payment and cannot be returned should purchase cease to continue. It can be paid via a card machine, or via BACS transfer. 8. Financial Evaluation By At the time that an offer has been made and is being considered by the seller, you must take steps to find out from the prospective buyer the source and availability of his funds for buying the property and pass this information to the seller. Such information will include whether the prospective buyer needs to sell a property, requires a mortgage, claims to be a cash buyer or any combination of these. Such relevant information that is available should be included in the Memorandum of Sale having regard to the provisions of the Data Protection Act. These reasonable steps must continue after acceptance of the offer until exchange of contracts (in Scotland, conclusion of missives) and must include regular monitoring of the prospective buyer's progress in achieving the funds required, and reporting such progress to the seller. The agent has not tested any apparatus, equipment, fixtures and fittings or services and so cannot verify that they are in working order or fit for their purpose. A Buyer is advised to obtain verification from their solicitor or surveyor. References to the Tenure of the Property are based on information supplied by the Seller. The agent has not had sight of the title documents. A Buyer is advised to obtain verification from their solicitor.

**Tenure:** The property is offered for sale freehold by private treaty with vacant possession on completion.  
**Services:** Mains water with meter, mains electricity, mains drainage, gas fired central heating.  
**Local Authority:** Somerset Council, County Hall, The Crescent, Taunton, Somerset, TA1 4DY  
**Property Location:** <http://forum.heathened.inted>  
**Council Tax Band:** B  
**Broadband Availability:** Super Fast with up to 80 Mbps download speed and 20 Mbps upload speed.  
**Mobile Phone Coverage:** Check: <https://www.ofcom.org.uk/mobile-coverage-checker>  
**Flood Risk:** Rivers & Sea - Low, Surface water - Very Low.

**GENERAL REMARKS AND STIPULATIONS:**



50 Lime Crescent  
 Taunton, Somerset, TA1 2QG  
 £240,000 Freehold

2	1	1	C EPC

Wilkie May & Tuckwood

## Floor Plan

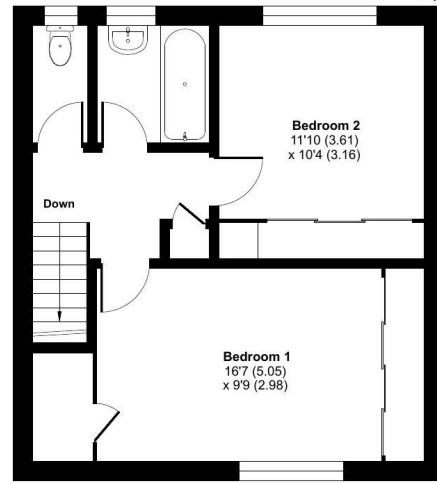
### Lime Crescent, Taunton, TA1

Approximate Area = 874 sq ft / 81.1 sq m

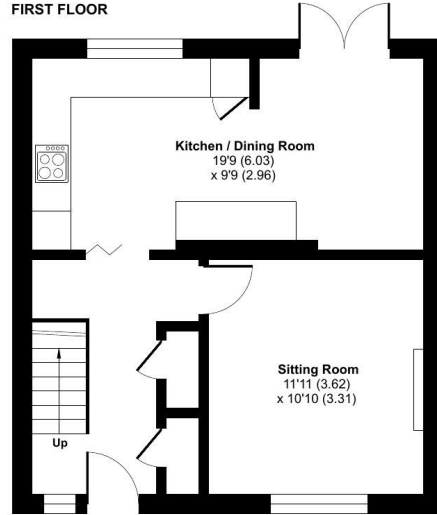
Outbuilding = 23 sq ft / 2.1 sq m

Total = 897 sq ft / 83.2 sq m

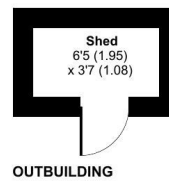
For identification only - Not to scale



FIRST FLOOR



GROUND FLOOR



OUTBUILDING

Floor plan produced in accordance with RICS Property Measurement 2nd Edition, Incorporating International Property Measurement Standards (IPMS2 Residential). © rlxhocom 2026. Produced for JREA Ltd TA Wilkie May & Tuckwood, Taunton. REF: 1433720

WM&T

## Description

- Two Bedrooms
- End Terrace House
- Driveway & Off Road Parking For 2
- Mains Gas Central Heating
- uPVC Double Glazing
- Well Presented Throughout
- Close To Amenities

A well presented two bedroom end of terrace home, ideally situated in Lime Crescent close to a range of local amenities and well regarded schools. The property offers light and comfortable accommodation arranged over two floors, is uPVC double glazed throughout and is warmed via mains gas fired central heating throughout. Externally, there is a pleasant rear garden providing a great space to relax or entertain. The property also enjoys the advantage of having a driveway to the rear providing two off road parking spaces.



The accommodation is arranged over two floors and comprises in brief; a front door leading into an entrance hallway with stairs rising to the first floor, doors to the kitchen and living room, and two full height storage cupboards. The living room is situated to the front of the property and features an electric fire with surround and a uPVC double glazed window with an aspect to the front. To the rear, the good sized kitchen/dining room is fitted with a range of matching wall and base units with roll edge work surfaces over, a stainless steel sink with mixer tap, an integrated four ring gas hob with extractor fan above and an eye level double electric oven. There is space for a fridge/freezer and plumbing for a washing machine, with spotlighting and French doors providing access to the rear garden. On the first floor there are two

double bedrooms, both benefiting from built-in wardrobes. The bathroom is fitted with a panelled bath with shower over and a wash hand basin, along with an obscured double glazed window to the rear. There is a separate low level WC. Externally, the rear garden is designed with low maintenance in mind, being predominantly laid to patio and gravel chippings. There is an outside tap, pergola and two sheds - one brick built and one timber, with the brick shed benefiting from power. A rear gate provides access to the double width driveway, offering off road parking for two vehicles.

WM&T