

Head Office:
Dixon Kelley Estate Agents
1 Penn Court
Station Road, West Moors
Dorset. BH22 0JJ

DORSET PARK HOMES

DRAFT

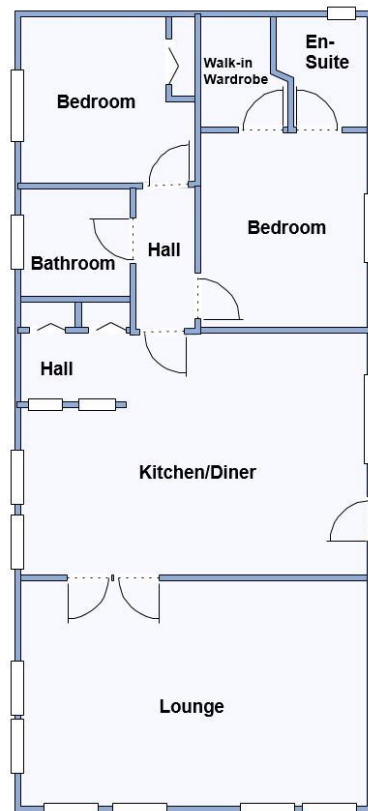
www.dorsetparkhomes.com

Telephone: 01202 877511

38 Stour Park, New Road, Bournemouth. BH10 7DE



Exceptional High Quality Park Home



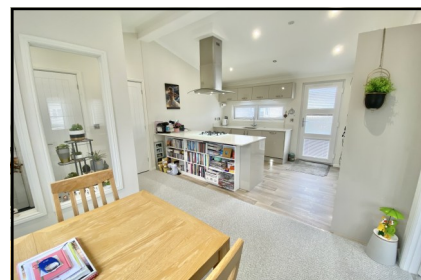
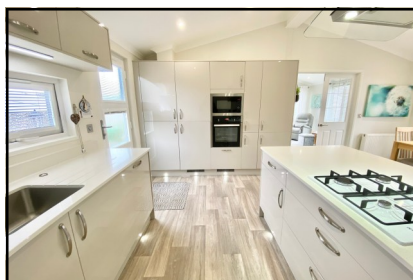
This drawing has been prepared for diagrammatic purpose only. Not to scale

2 Bedroom Park Home approx 47' x 20'

Accommodation & approximate room dimensions:

- Prestige 'Sofia' Park Home approx 2019
- Stylish Interior Design with Vaulted Ceilings
- Entrance Hall: Cloaks cupboard & linen cupboard
- Kitchen/Diner: approx 19'1" x 13'7". A superb room comprising a good range of base & wall units. Granite worktops with inset sink having waste disposal unit. Built-in oven, microwave, hob & cooker hood. Integrated dishwasher, washing machine & fridge/freezer. Cupboard housing combination gas boiler. Door to garden.
- Lounge: approx 19'1" x 13'1". Vaulted ceiling.
- Inner Hall
- Bedroom 1: approx 11'6" x 9'1" Walk-in wardrobe.
- Luxury En-Suite Shower Room
- Bedroom 2: approx 10'4" x 9'1". Fitted wardrobe.
- Luxury Bathroom
- Gas Central Heating (system untested)
- PVCu Double-Glazing & LED Lighting
- Detached GARAGE with power & light.
- Wide Paved Driveway & Landscaped Patio Garden.
- Age restriction 60+. No Pets Allowed
- Popular, well maintained Residential Park.

Good location close to amenities



Pitch Fee: Approx £237.40 per month plus £9 Water per month
Subject to Annual Review
Council Tax Band: 'A' **Tenure: 1983 Mobile Homes Act Agreement**

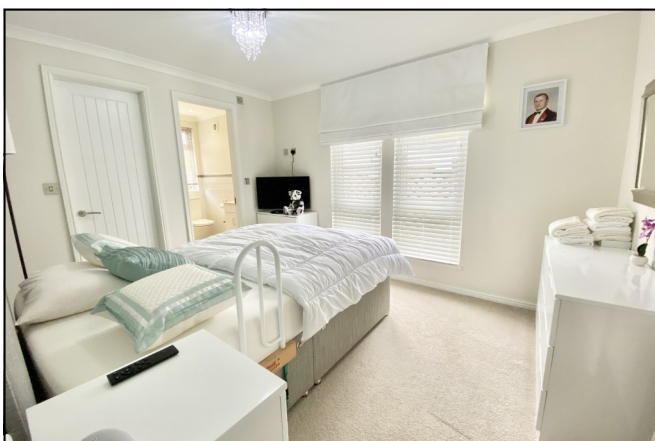
Price £299,950

VIEWING STRICTLY BY APPOINTMENT WITH THE VENDOR'S AGENT Dorset Park Homes 01202 877511

IMPORTANT NOTE: These particulars are believed to be correct but their accuracy is not guaranteed. They do not form part of any contract. Nothing in these particulars shall be deemed to be a statement that the property is in good structural condition or otherwise, nor that any of the services, appliances, equipment or facilities are in good working order or have been tested. Purchasers should satisfy themselves on such matters prior to purchase. Ref.W05233

The recommended specialist in Park Home sales
Proprietor: Simon Dixon





Beautifully Presented Modern Home on Bournemouth's Premier Residential Park