



## VICARAGE GATE, W8

£950,000

Three Bedroom  
Top Floor  
Share of Freehold  
Lift  
Prime Kensington Location  
Porter

@marshandparsons  
marshandparsons.co.uk

MARSH &  
PARSONS



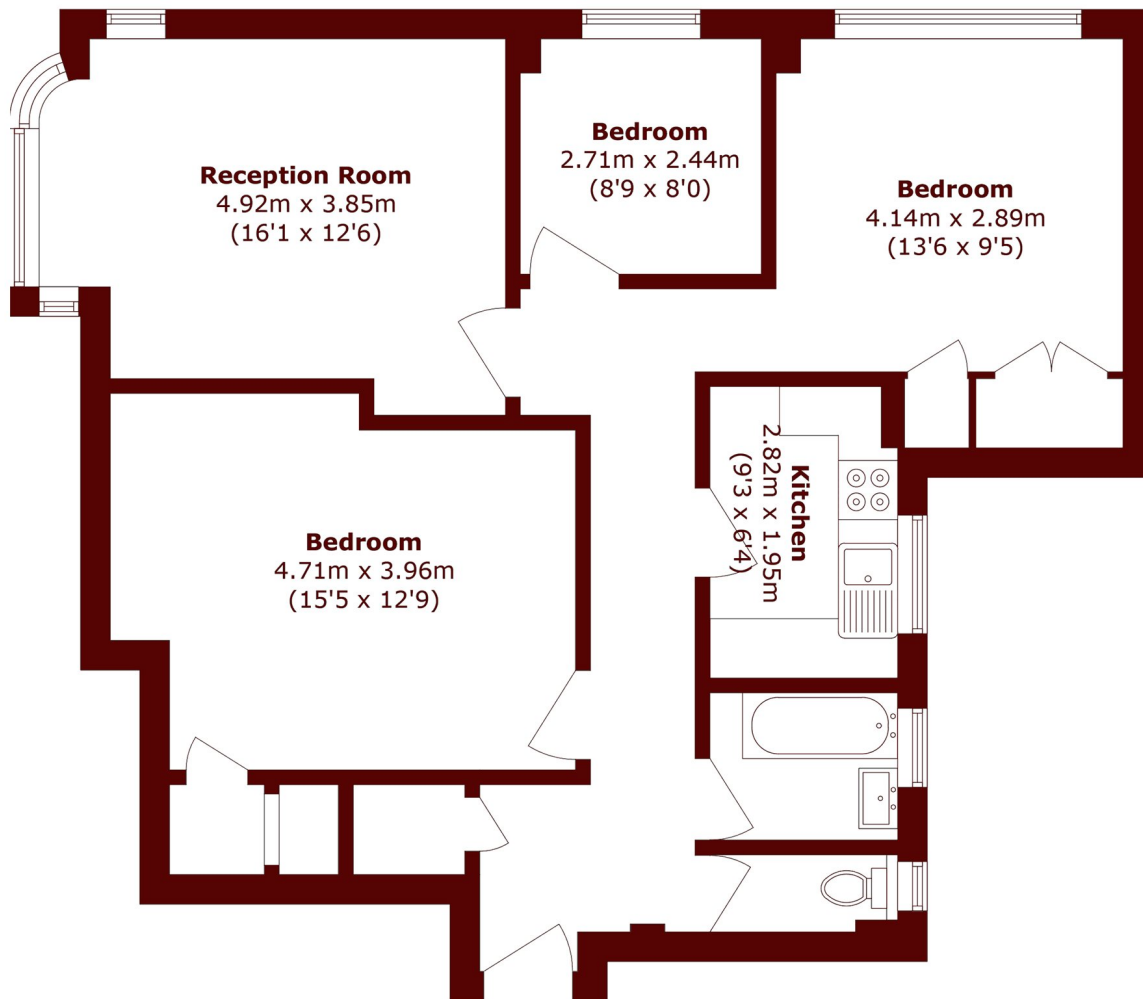
# ABOUT THE PROPERTY

A lateral three bedroom penthouse apartment in a popular portered block in prime Kensington.

Winchester Court is a sought-after Art Deco purpose-built portered building in a prime location, close to the amenities of Kensington High Street and Notting Hill.



# STEP INSIDE VICARAGE GATE



Total area (approx.): 79.8 sq. m (858.9 sq. ft)

**Kensington**  
020 7368 4450

Energy Rating: We aim to make our particulars both accurate and reliable. However, they are not guaranteed; nor do they form part of an offer or contract. If you require clarification on any points then please contact us, especially if you're traveling some distance to view. Please note that appliances and heating systems have not been tested and therefore no warranties can be given as to their good working order

**MARSH &  
PARSONS**