

Flat 1, 17 Grosvenor Place

Bath, BA1 6AX

1 bedroom apartment

Rent pcm:
£950.00

Deposit:
£1,315.38



Property details

Available: Now

Council Tax - C

EPC - Listed

Pets considered

Private rent

Entering the apartment there is a spacious hallway which benefits from a built in cupboard which offers an airing cupboard to one side and space for coats and shoes on the other. The hallway also benefits from a light well flooding it with natural light, making it a light and airy space.

The bathroom offers a double sized shower, wash hand basin and close coupled WC. The bathroom is bright and light and fitted with a white suite.

To the front of the property is a well-proportioned double bedroom with a period decorative fireplace and full working shutters.

To the rear of the property is the stunningly spacious living room which opens into the kitchen. Period features such as fireplace, cornicing and working shutters compliment the contemporary design of this refurbished apartment. The windows the rear overlook the garden which is shared and over towards Bathampton meadows which are ideal for walks and gives access to the canal path.

The kitchen which opens up into the living room offers a range of base and eye level units with stainless steel sink with drainer and mixer tap and built in over and hob, extractor, washer dryer and integrated fridge freezer. There is even a space in front of the window which is perfect for a small table and chairs.

www.curo-group.co.uk

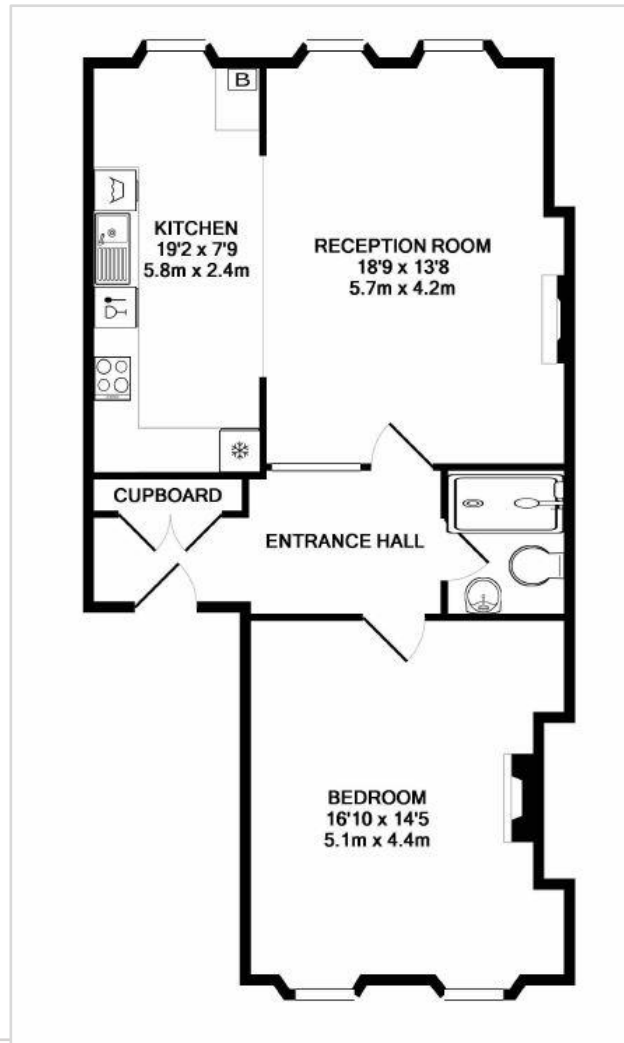
rentahome@curo-group.co.uk

The Maltings Lower Bristol Road Bath BA2 1EP | 01225 366000



**Flat 1, 17
Grosvenor
Place**
Bath, BA1 6AX

1 bedroom apartment



www.curo-group.co.uk

rentahome@curo-group.co.uk

The Maltings Lower Bristol Road Bath BA2 1EP | 01225 366000

