



56 Pilemarsh  
, Bristol, BS5 9NT

**Asking price £460,000**



# 56 Pilemarsh



## Description

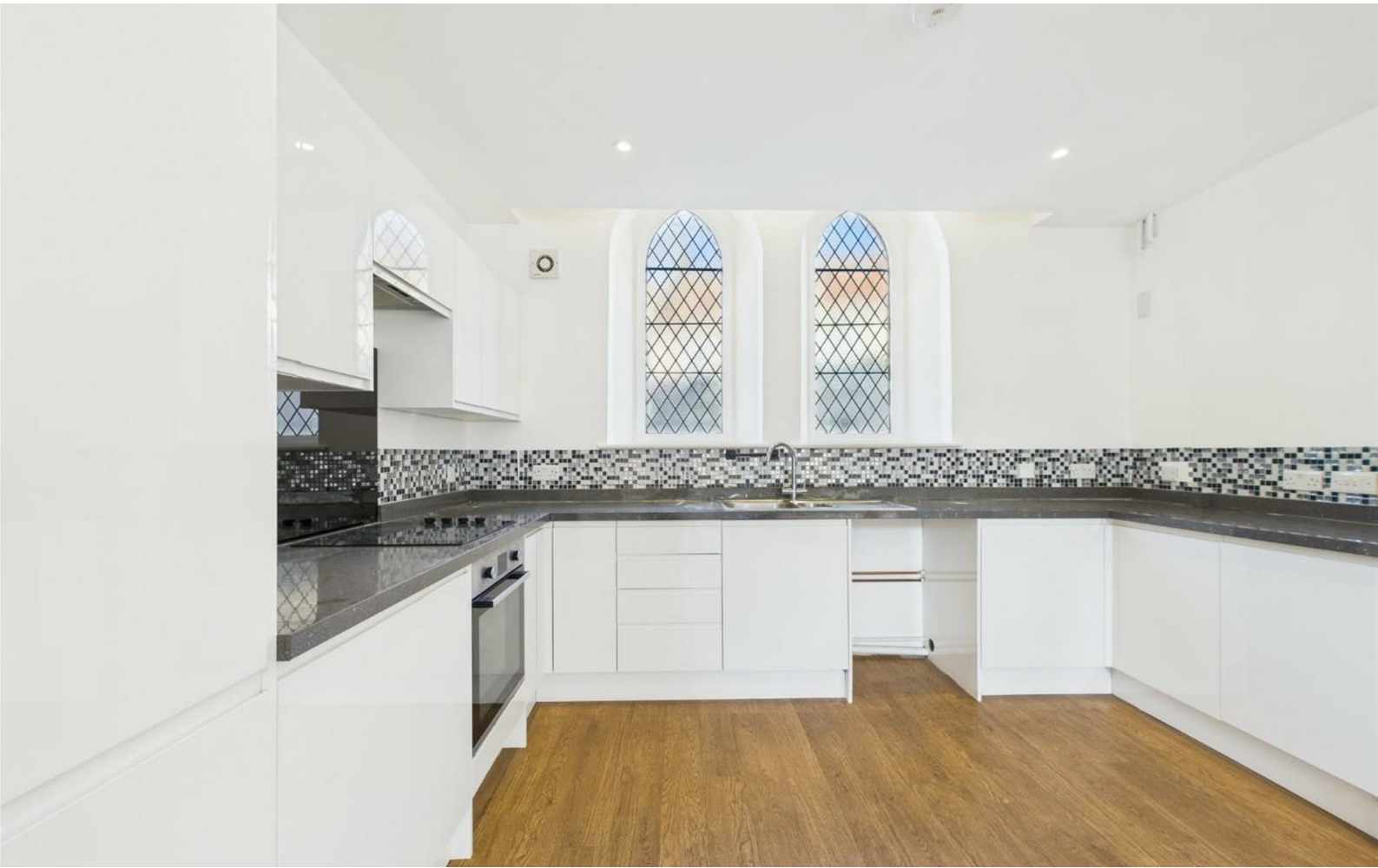
Welcome to this charismatic, 3 storey church converted town-house; which is set only a short walk away from St George's Park and within close proximity to Church Road and all of its attractions: bars like the Rubino Lounge, pubs like The Red Church and plentiful shops and cafés!

This property still has many original and stand-out features, complimentary to its historic existence, as well as having a modern finish that gives such a unique style.

You're first greeted by a spacious hallway, which also contains a storage cupboard under the stairs and a downstairs WC. This then leads through to a commodious, open plan living arrangement, beaming with light and giving an airy feel. This also includes a well-fitted, modernised kitchen at the front of the property.

Towards the rear, a full width lounge/dining area, which also comprises of beautiful

- NO ONWARD CHAIN
- ENCLOSED REAR SOUTHERLY FACING GARDEN
- OPEN PLAN LIVING SPACE
- THREE ENSUITE DOUBLE BEDROOMS
- VAULTED BEAM CEILINGS
- SIDE COURTYARD
- MODERN KITCHEN
- FEATURE STAINED GLASS WINDOW
- AIR SOURCE HEAT PUMP CENTRAL HEATING
- CLOSE TO CHURCH ROAD

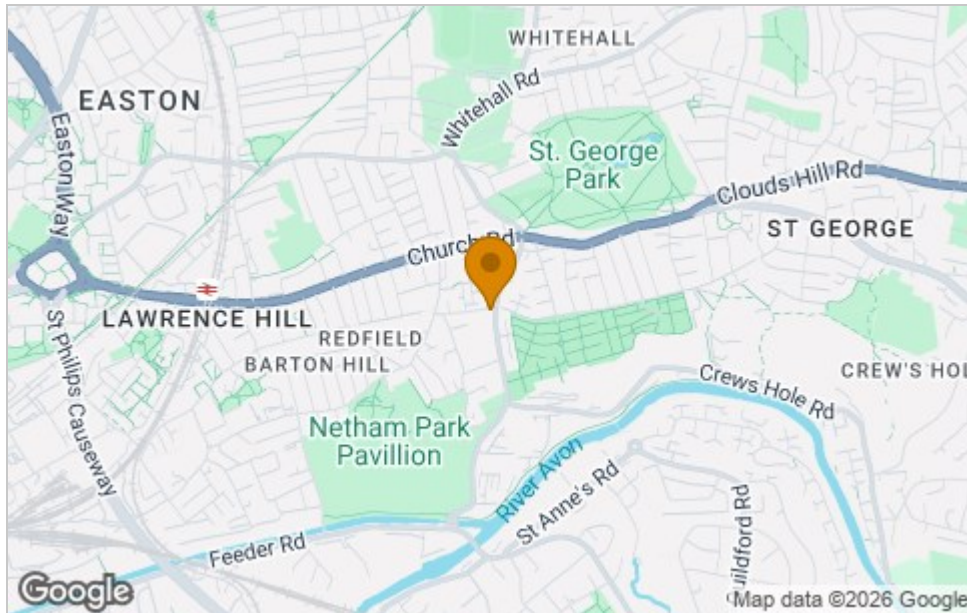




# Floor Plan



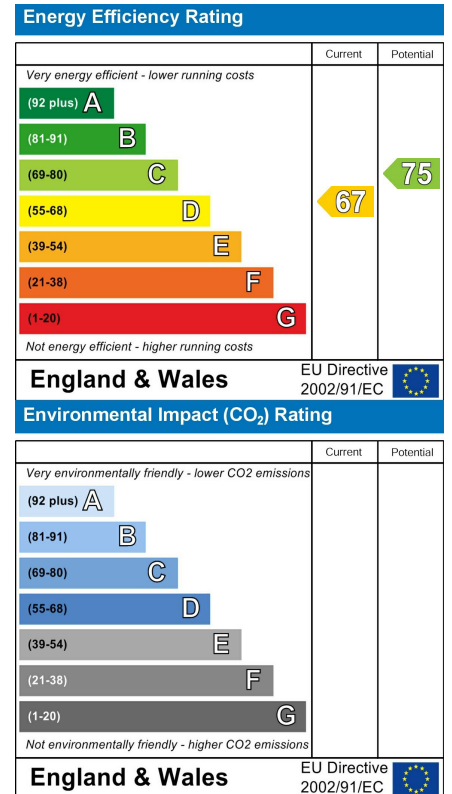
# Area Map



# Viewing

Please contact our House + Co Property (Sales) Office on 0117 907 0020 if you wish to arrange a viewing appointment for this property or require further information.

# Energy Efficiency Graph



These particulars, whilst believed to be accurate are set out as a general outline only for guidance and do not constitute any part of an offer or contract. Intending purchasers should not rely on them as statements of representation of fact, but must satisfy themselves by inspection or otherwise as to their accuracy. No person in this firm's employment has the authority to make or give any representation or warranty in respect of the property.