



## Sheen Court, TW10

**£2,200** Per calendar month

A larger than average two double bedroom apartment, ideal for a couple or a family. With a spacious living room, a bright kitchen, ample storage and beautiful communal gardens. \*\*Rent includes heating and hot water\*\*.

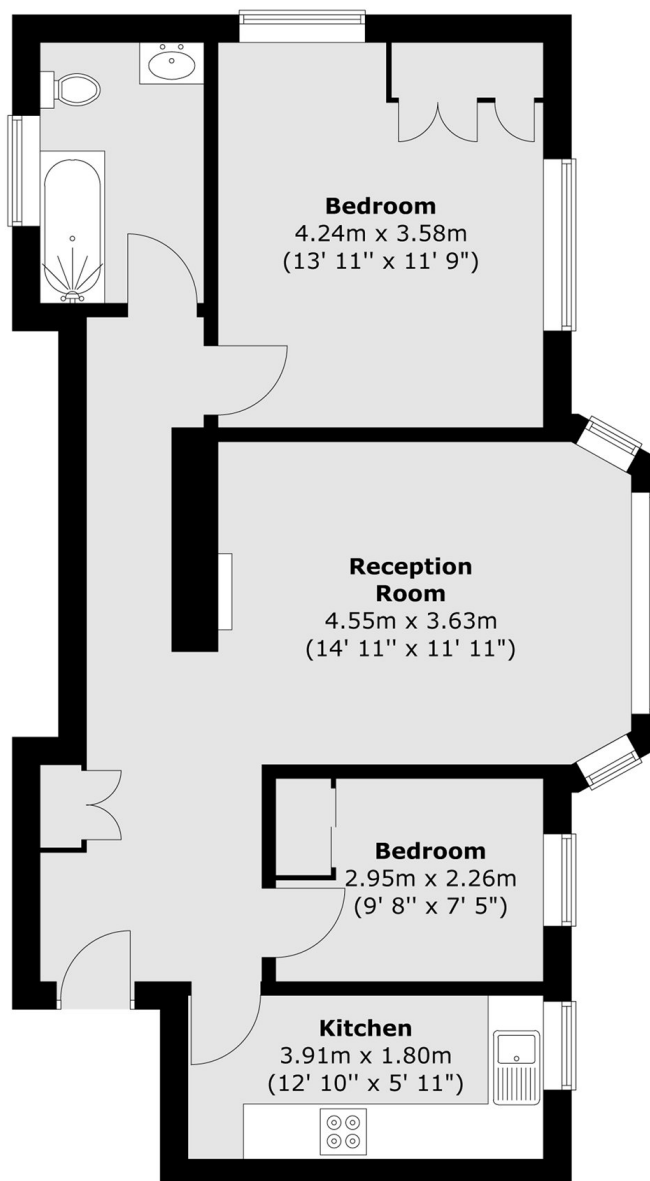
Sheen Court is a prestige gated development ideally positioned for Richmond and North Sheen Stations. With great transport links and close to the open space of Richmond Park.

### Features

- Two Double Bedrooms
- Includes Heating & Hot Water
- Fantastic Location
- Spacious Apartment
- Beautifully Presented
- Ample Storage

# Sheen Court, Richmond, TW10

## First Floor



Total area (approx.) : 66.9 sq. m (720 sq. ft)