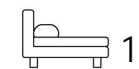




Living
made
better

The Mast
Gallions Reach, E16 2QZ



Offers In Excess Of £240,000

The Mast, Gallions Reach, E16 2QZ

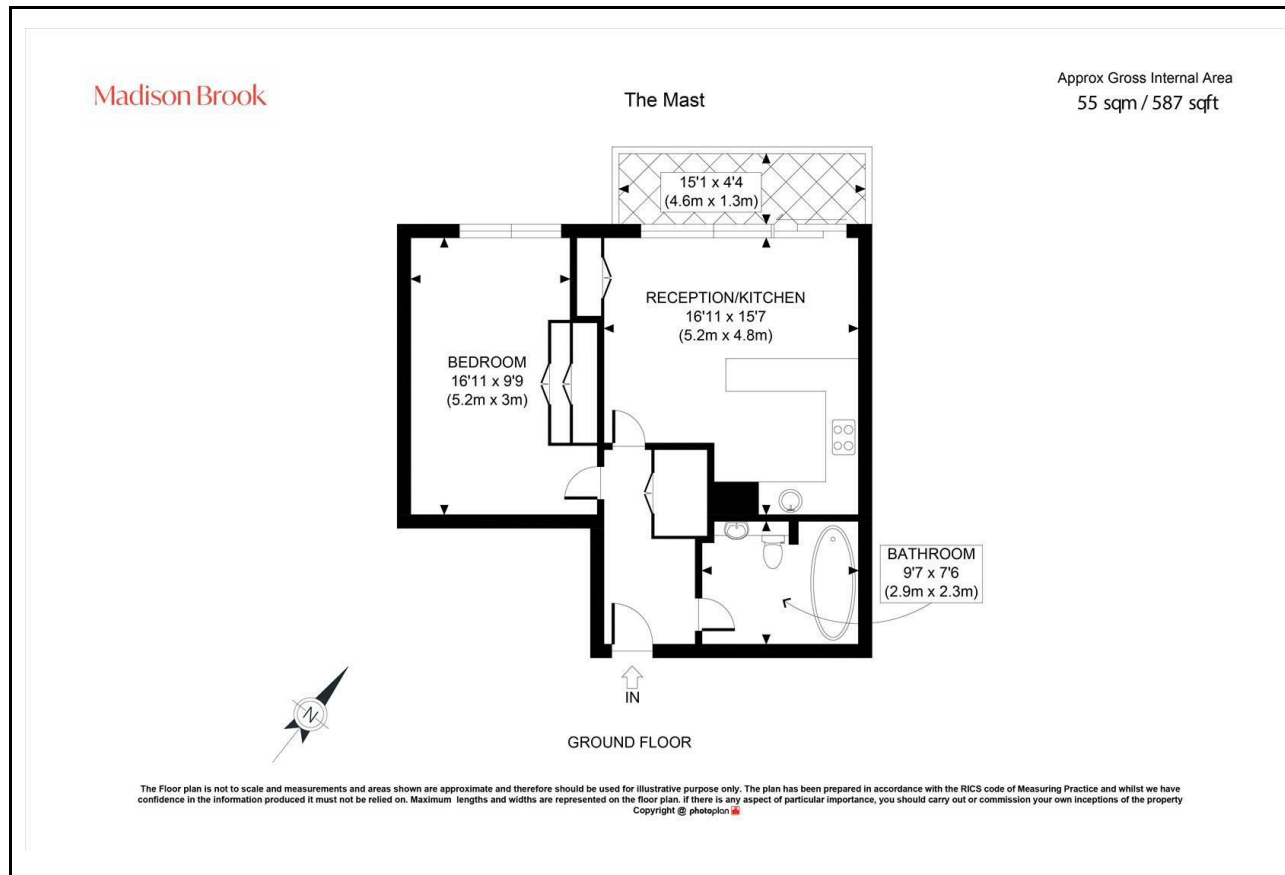
Madison Brook

Property Summary

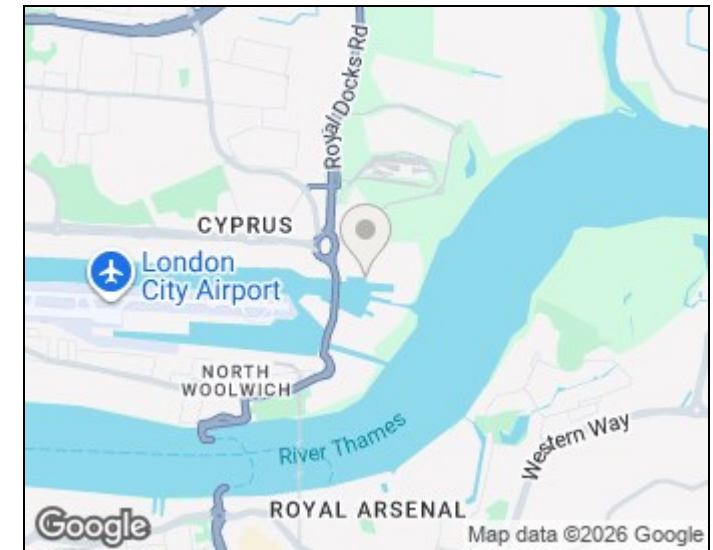
Beautifully positioned in a riverside development, this spacious one-bedroom apartment combines peaceful dockside living with excellent city access. The open-plan kitchen and reception area features sleek fitted units and a large island, with full-height windows leading to a private balcony overlooking the River Thames. The double bedroom includes built-in wardrobes, while the modern bathroom offers a stylish three-piece suite. Residents benefit from a 24-hour concierge, on-site shops and dining, plus a communal play area.

Just minutes from Gallions Reach DLR and retail park, this property is ideal, the apartment enjoys excellent access to everyday amenities and transport, making this a superbly connected yet peaceful London home.

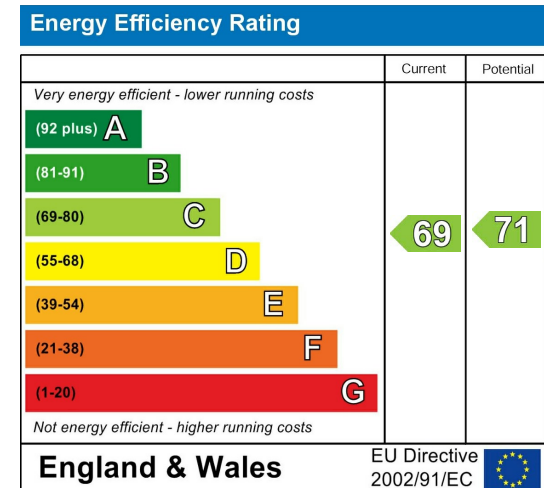
Floorplan



Area Map



Energy Efficiency Graph



These particulars, whilst believed to be accurate are set out as a general outline only for guidance and do not constitute any part of an offer or contract. Intending purchasers should not rely on them as statements of representation of fact, but must satisfy themselves by inspection or otherwise as to their accuracy. No person in this firm's employment has the authority to make or give any representation or warranty in respect of the property.

Unit B 20 Western Gateway, Royal Victoria
Dock, London, E16 1BS
Tel: 020 3946 6000 Email:
docklands@madisonbrook.com
<https://madisonbrook.com/>