



Goldhawk Road, W12

£925,000

Dexters



Goldhawk Road, W12

Goldleaf Apartments is an exclusive development set back from Goldhawk Road. The development comprises of ten unique apartments that have been fitted with a high specification throughout.

Transport links include stations at Goldhawk Road (Hammersmith & City and Circle Underground lines) and Shepherds Bush (Central Underground line and London Overground lines).

Goldhawk Road is ideally located for the various amenities on offer in the area including superb pubs and restaurants, whilst Westfield London and the former TV Centre with White City House are only moments away.

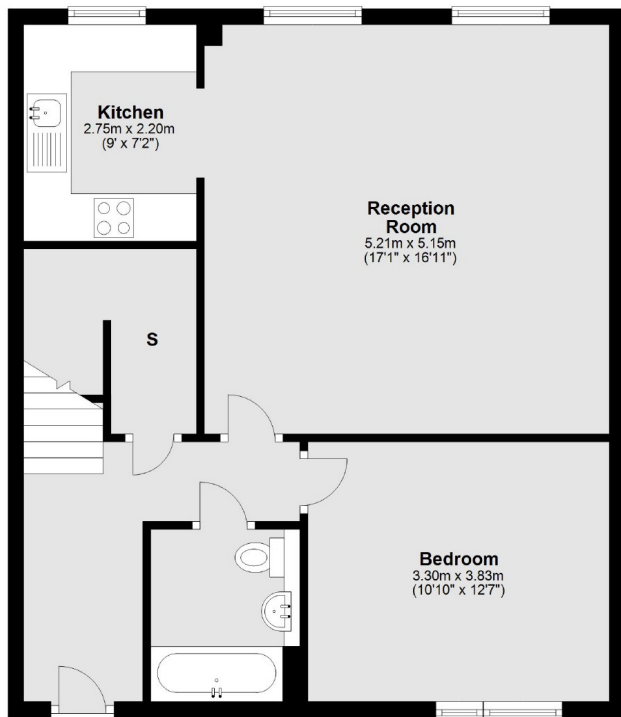
Features

- New Build Apartments
- Exclusive Development
- Two & Three Bedrooms
- Split Level Accommodation
- Outside Space
- Close To Transport Links

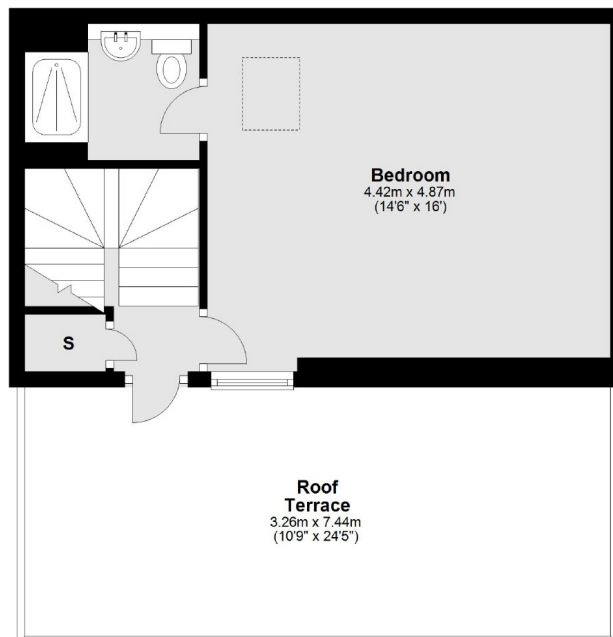


Goldhawk Road, London, W12

Fourth Floor



First Floor



Main area: Approx. 97.0 sq. metres (1044.2 sq. feet)
Plus roof terrace, approx. 24.3 sq. metres (261.5 sq. feet)