



www.jeffreygross.co.uk

CARDIFF

VALE

CAERPHILLY

BRISTOL

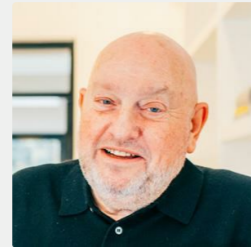
The Landings

PENARTH MARINA



This is a light and spacious two double bedroom flat located in a very convenient location.

Comments by Mr Jeff Hopkins

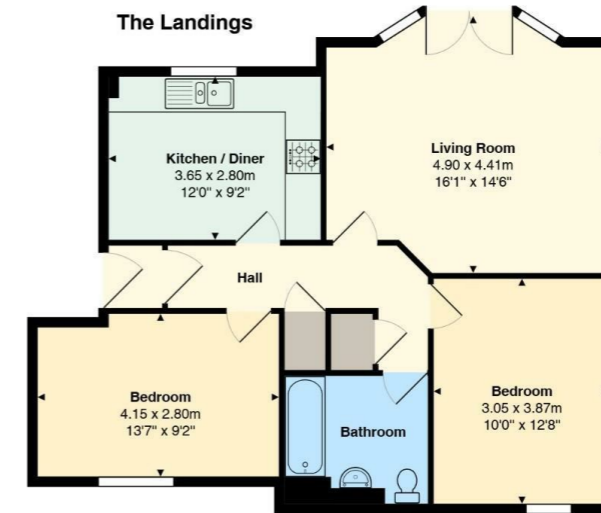


Property Specialist
Mr Jeff Hopkins
Valuer

jeff@jeffreycross.co.uk



Comments by the Homeowner



Total Area: 68.9 m² ... 742 ft²

All measurements are approximate and for display purposes only



Energy Efficiency Rating		Current	Potential
Very energy efficient - lower running costs			
(92 plus) A			
(81-91) B			
(69-80) C		81	81
(55-68) D			
(39-54) E			
(21-38) F			
(1-20) G			
Not energy efficient - higher running costs			
England & Wales	EU Directive 2002/91/EC		



The Landings

Penarth Marina, Penarth, CF64 1SR

£215,000



2 Bedroom(s)



1 Bathroom(s)



742.00 sq ft



Contact our
Penarth Branch
02920415161

A well presented purpose built Two Bedroom First Floor Apartment situated on the popular Marina development with easy access to located adjacent to a large park, Penarth Town and Cardiff Bay and just a few minutes walk away from a large Tesco supermarket as well as a pub and a number of excellent restaurants. The accommodation briefly comprises of Large, light living room with with patio doors and Juliet balcony, Fitted Kitchen/Breakfast Room, Bathroom and Two Double Bedrooms. Gas Central Heating with Combi Boiler. Secure entry to the apartment block. Allocated parking and plenty of visitors parking. Available For Sale with no ongoing chain.



Hallway Band D

With storage cupboard and airing cupboard. Entry phone.

Living room 16'1 x 14'6 (4.90m x 4.42m)

Kitchen 12'0 x 9'2 (3.66m x 2.79m)

Fitted units and built-in Gas four burner hob, oven and cooker hood. Wall mounted Worcester combi boiler.

Bedroom 1 13'7 x 9'2 (4.14m x 2.79m)

Bedroom 2 10'0 x 12'8 (3.05m x 3.86m)

Bathroom

With bath and shower above.

Outside

Allocated parking plus ample visitors parking.

Tenure

Leashold 999 years from 1998

Service charge

we have been informed that there is no ground rent and a service charge of £1,027.55. annually

Council tax



CARDIFF

VALE

CAERPHILLY

BRISTOL

www.jeffreygross.co.uk