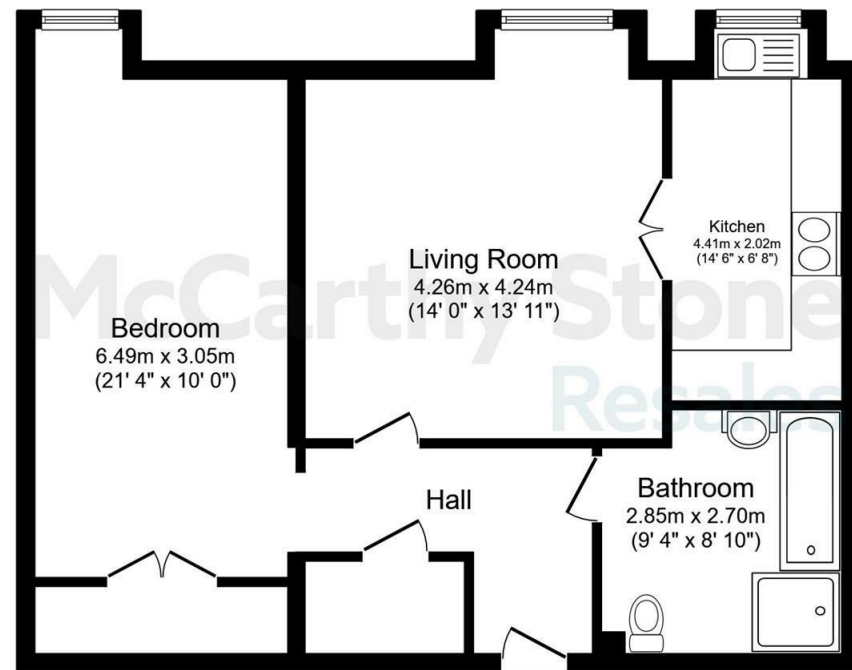


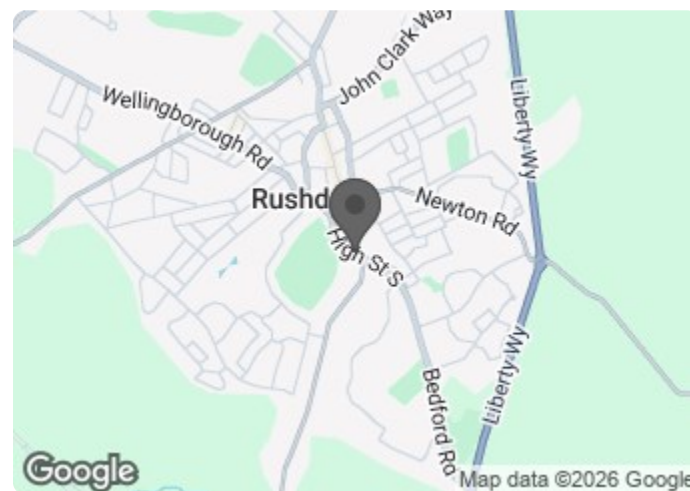
69 Townsend Court

High Street South, Rushden, NN10 0FR

PRICE REDUCED



Total floor area 67.3 sq.m. (724 sq.ft.) approx
 This floor plan is for illustrative purposes only. It is not drawn to scale. Any measurements, floor areas (including any total floor area), openings and orientation are approximate. No details are guaranteed, they cannot be relied upon for any purpose and they do not form part of any agreement. No liability is taken for any error, omission or misstatement. A party must rely upon its own inspection(s). Powered by www.localagent.com



Energy Efficiency Rating		Environmental Impact (CO ₂) Rating	
Very energy efficient - lower running costs	Current	Potential	Very environmentally friendly - lower CO ₂ emissions
(92 plus) A			(92 plus) A
(81-91) B			(81-91) B
(69-80) C			(69-80) C
(55-68) D			(55-68) D
(39-54) E			(39-54) E
(21-38) F			(21-38) F
(1-20) G			(1-20) G
Not energy efficient - higher running costs			Not environmentally friendly - higher CO ₂ emissions
England & Wales	70	71	England & Wales
EU Directive 2002/91/EC		EU Directive 2002/91/EC	

Council Tax Band: C



PRICE REDUCTION
 Asking price £99,999 Leasehold

A well presented one bedroom second floor apartment with a larger than average floorplan and an outlook towards the High Street and quiet corner plot location. Townsend Court is a McCarthy Stone retirement living plus development with 24/7 staffing, onsite restaurant and domestic assistance.
 Entitlements Advice and Part Exchange available - speak to your Property Consultant for more information

This floor plan is not drawn to scale and is for illustrative purposes only. Any measurements, floor areas (including any total floor area), openings and orientation are approximate and for guidance only. McCarthy Stone Resales do not take liability for any error, omission or misstatement. All parties must rely on their own inspections. It should not be assumed that any furniture or fittings contained in the photographs are included in any sale. All details referring to time and distances to localities are approximate. Details regarding any common charges and other applicable fees are provided by the seller and should not be relied on without verification and further checks made through a solicitor/conveyancer. Please contact the Property Consultant for further information that Appliances (including central heating) have not been tested, therefore it cannot be assumed that they are in good working order. All interested parties are advised to check availability and make an appointment before travelling to view the property to avoid disappointment or wasted time or travel expenses. The details contained within this brochure are for information purposes only and do not form part of any agreement. All purchases will be subject to contract terms. © All artwork (photos and floorplans) and written content are the sole property and copyright of McCarthy & Stone Resales Limited and are legally protected by UK & International copyright laws. Under no circumstance may you download, reproduce, publish or distribute any content for commercial purposes, without prior written permission from McCarthy Stone Resales. Unauthorised duplication or reuse for commercial purposes is prohibited by the Copyright law McCarthy & Stone Resales Limited, Trading as McCarthy Stone Resales • T: 0345 556 4104 • W: mccarthyandstoneresales.co.uk Registered Office: 100 Holdenhurst Road, Bournemouth, Dorset, BH8 8AQ. Registered in England and Wales No. 10716544



Call us on 0345 556 4104 to find out more.

resales@mccarthyandstone.co.uk | mccarthyandstoneresales.co.uk

High Street South, Rushden, Northamptonshire, NN10 0FR

Townsend Court

Townsend Court is a McCarthy & Stone Retirement development and consists of 69 one and two bedroom apartments. Located on High Street South less than one mile from Rushden town centre. Townsend Court boasts a large conservatory, library and south facing garden, and Rushden Hall Park right next door with 32 acres of beautiful parkland open to the public. Situated only 100 yards away from the bus stop, homeowners benefit from an excellent bus service, providing regular routes to local towns and villages such as Olney Village and further afield.

An Estate Manager is on hand to manage the day to day running of the development and attend to any queries you may have. Townsend Court have CQC registered staffing to provide personal care and medication packages where required. Within the service charge homeowners are allocated 1 hours domestic assistance per week. For your reassurance the development has secure camera entry systems and 24-Hour emergency call system provided by a personal pendant with static call points in bathroom and main bedroom. The development has a homeowners' lounge which is a superb venue for socialising with friends and family. If your guests have travelled from afar, they can extend their stay by booking into the development Guest Suite (usually for a fee of £25 per night - subject to availability) which has an en-suite shower room, tea and coffee making facilities and a TV. For added convenience there is an onsite waitress service restaurant with freshly cooked meals provided everyday.

Local Area

Townsend Court is located in the heart of Rushden Town Centre and offers a wealth of independent businesses as well as well-known high street brands within an attractive late Victorian/Edwardian setting, an enduring reminder of Rushden's rise to prominence as a 'boot and shoe' town. Sainsbury's supermarket is nearby.

Rushden Lakes is in easy reach and offers an exciting new dimension to the existing town providing 30 acres of high quality shopping, restaurants, 12-screen cinema, and incorporates 214 acres of lakes for leisure activities - an area of outstanding natural beauty for everyone to explore and enjoy.

Rushden is centrally located on the A6 between Bedford and Kettering. The county of Bedfordshire borders the town to the south whilst to the north lies the River Nene and the stunning landscapes and world-class wildlife of the Nene Valley. Convenient road links via the A45 connect Rushden to the neighbouring towns of Wellingborough (4 miles) and Northampton (16 miles) and the M1 motorway westbound. The A14, the M1/M6 (North) and A1 are also within easy reach. Peterborough (30 miles), Milton Keynes (23 miles), Cambridge (44

miles) and the East coast are also easily accessible. Rushden is also well placed for train and airport links.

Entrance Hall

Front door with spy hole leads to the entrance hall. The 24-hour Tunstall emergency response system is located within the hall. Smoke detector and apartment security door entry system with intercom. Wall mounted thermostat. Doors lead to the lounge, bedroom, and bathroom.

Lounge

A spacious lounge which provides ample room for dining, ideally positioned next to the large window, which allows lots of natural light in. The lounge has a feature fireplace which acts as an attract focal point. TV & Telephone point, two ceiling light points and a range of raised height power sockets. Glazed wooden double doors opening to separate kitchen.

Kitchen

Fitted kitchen has a range of fitted wall and base, cupboards, drawers and roll edge work surfaces are finished with a tiled splash back. Stainless steel sink unit with mixer tap sits below the window with blind. Built in electric oven with space above for a microwave and electric ceramic hob with extractor hood. Integrated under counter fridge & freezer. Anti-slip flooring and emergency pull cord.

Bedroom

A generously sized bedroom with a built in wardrobe with double doors. TV & Telephone point, central light point and a range of raised height power sockets. Emergency pull-cord.

Bathroom

Purpose built wet room comprising; low level bath with support rail and separate walk in shower unit with grab rails and fitted curtain; vanity unit wash hand basin and fitted mirror above; ceiling light; emergency pull-cord, and heated towel rail.

Car Parking

The parking is based on a first come first served basis.

Service Charge Includes

What your service charge pays for:

- Estate Manager who ensures the development runs smoothly
- CQC Registered care staff on-site 24/7 for your peace of mind
- 1 hour cleaning / domestic assistance per week, per apartment
- 24hr emergency call system
- Monitored fire alarms and door camera entry security systems
- Maintaining lifts
- Heating and lighting in communal areas
- The running costs of the onsite restaurant
- Cleaning of communal areas daily

1 Bed | Asking price £99,999

- Cleaning of windows
- Maintenance of the landscaped gardens and grounds
- Repairs & maintenance to the interior communal areas
- Contingency fund including internal and external redecoration of communal areas
- Buildings insurance, water and sewerage rates

The service charge does not cover external costs such as your Council Tax, electricity or TV. Find out more about service charges please contact your Property Consultant or Estate Manager. Annual service charge: £8,041.59 for financial year ending 30/09/2026

Ask about our free entitlements service to find out what benefits you may be entitled to.

Lease Information

Lease: 125 years from 1st June 2008

Ground rent: £748.01 per annum

Ground rent review: 1st June 2038

It is a condition of purchase that residents must meet the age requirement of 60 years of age or over.

Moving Made Easy & Additional Information

Moving is a huge step, but don't let that hold you back. We have a range of services to help your move go smoothly, including:

- FREE Entitlements Advice to help you find out what benefits you may be entitled to.
 - Part Exchange service to help you move without the hassle of having to sell your own home.
 - Removal Services that can help you declutter and move you in to your new home.
 - Conveyancing specialists who are experienced with sales and purchases of McCarthy Stone retirement properties.
- FOR MORE INFORMATION CHECK OUR WEBPAGE ADDITIONAL SERVICES OR SPEAK WITH OUR PROPERTY CONSULTANT
- Full Fibre Broadband available
 - Mains water and electricity
 - Electric room heating
 - Mains drainage

