



**JOWEBSTER**

*29 Lucas House*  
Coleridge Gardens, SW10



### Property Attributes

- Open Plan Reception Room
- Kitchen
- One Bedroom
- One Bathroom
- Underfloor heating and air cooling
- Tennis Court
- Gym
- Swimming Pool, Sauna and Steam room
- Car Parking
- Landscaped gardens



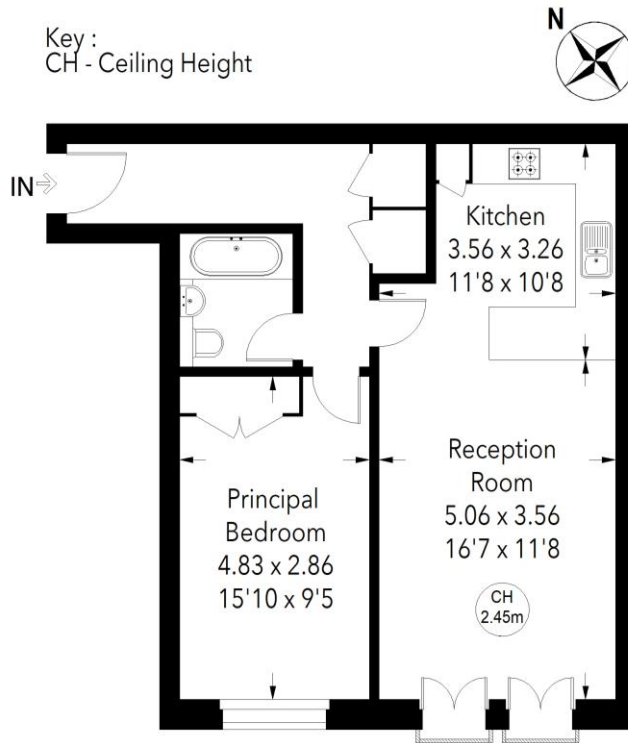
### Terms

- Price: £685,000
- Borough: Royal Borough of Kensington And Chelsea
- Tenure: Leasehold aprox. 975 years remaining
- Service Charge: £6,990 per annum
- Ground Rent: £100 per annum
- Council Tax Band: Band F



# LUCAS HOUSE, SW10

Approximate gross internal area = 614 sq ft / 57.04 sq m



Fourth Floor

Not to scale, for guidance only and must not be relied upon as a statement of fact.  
All measurements and areas are approximate only

+44 (0) 20 7349 7055  
sales@jowebster.com

#### Misdescription Act

We wish to advise prospective purchasers that these sales particulars are believed to be correct, but their accuracy is in no way guaranteed, nor do they form any part of contract. We have not carried out a detailed survey nor tested the services, appliances or specific fittings. Measurements are approximate.